

ALFABETO POPOLOCA
sinch[?] ewaxini šūuⁿ

Instituto Lingüístico de Verano

1947



a



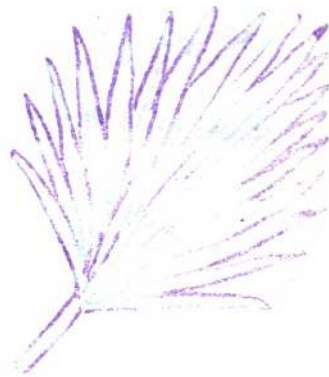
tja

āⁿ



chjāⁿ

2



kājnē



eⁿ

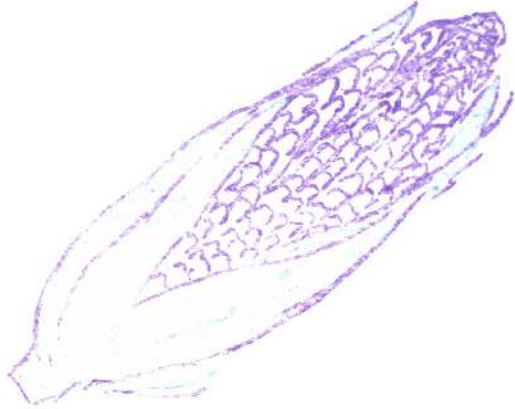


ntätjeⁿ

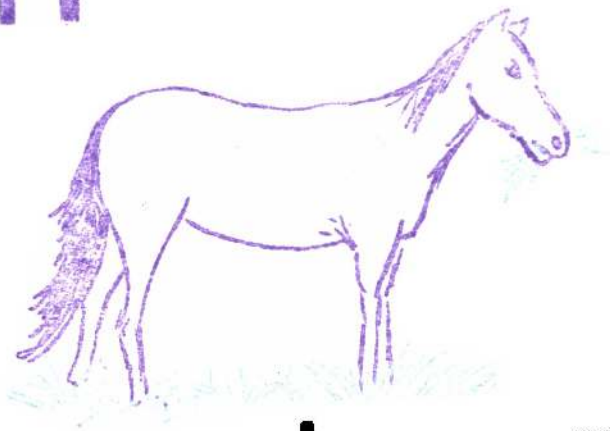
4

5

hi



in



kuxiⁿ



tonkí

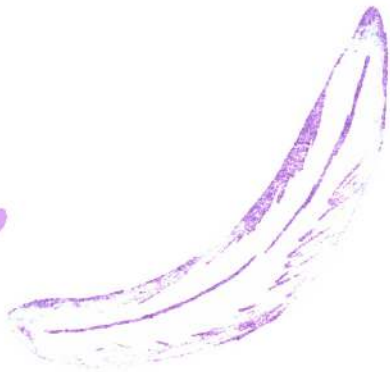
7

On



Kon

u



chūkā

9

un



chjuⁿ?

10

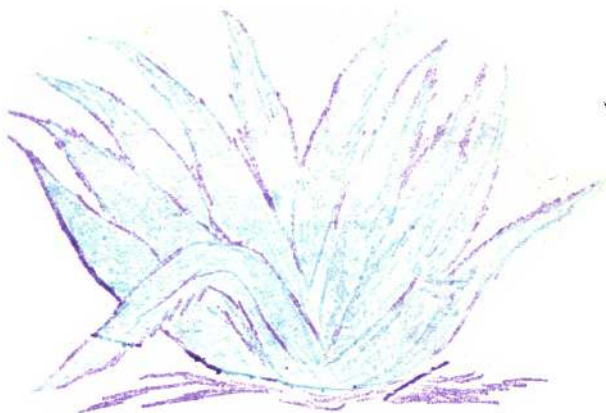
ch



chi?

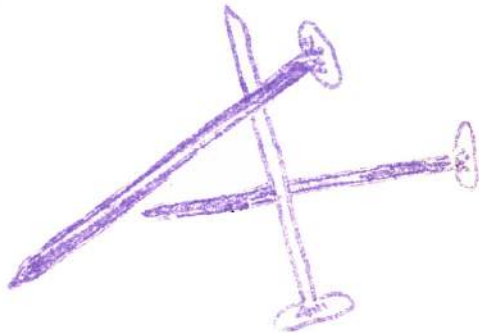
//

č



kāču

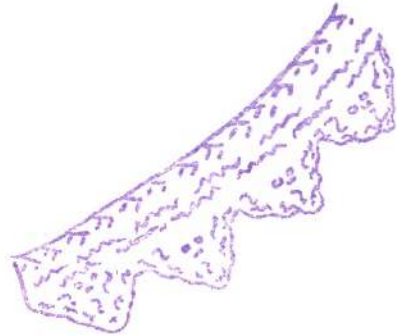
12



chīgā

13

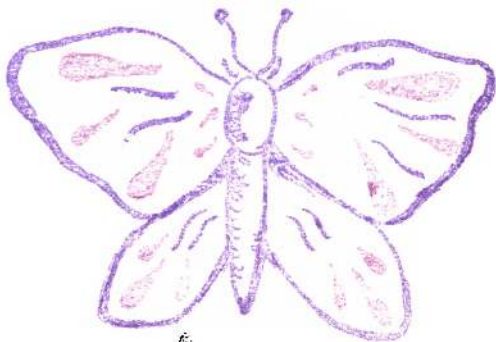
j



cjēⁿ

14

k



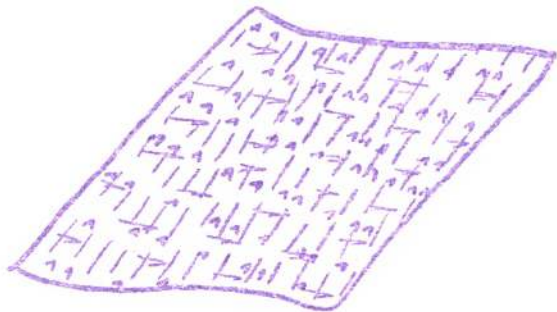
kuchīṁ

m



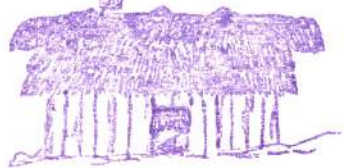
jma

n



nīyū

nch



nchīyā

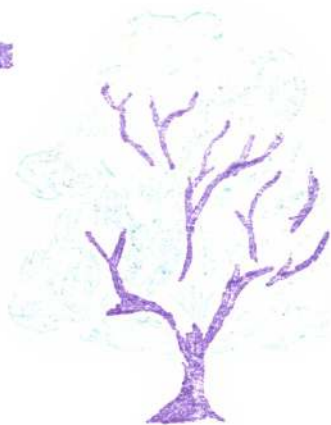
nk



nkayatja

19

nt



ntă

20

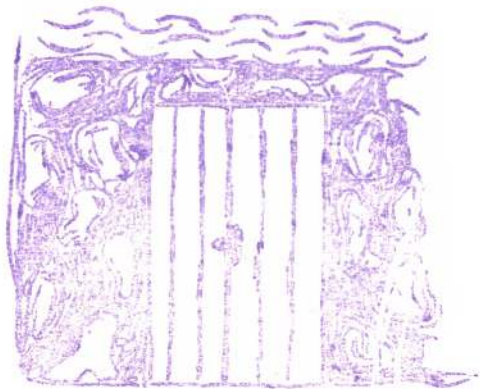
P



ch Pu

21

p



puerta?

22

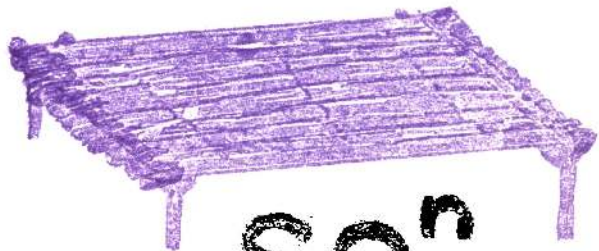
r



ritjuⁿ

23

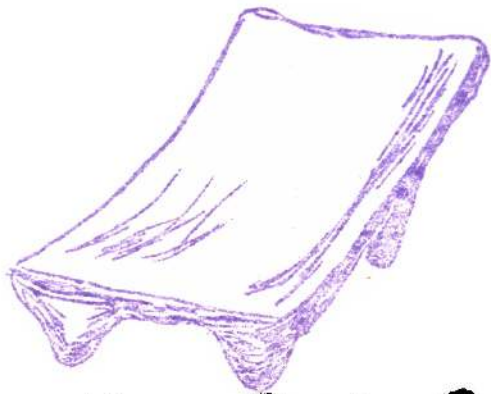
S



son

24

š



šupčiř

25

t



tja?ja

26

ts



tsájón

W

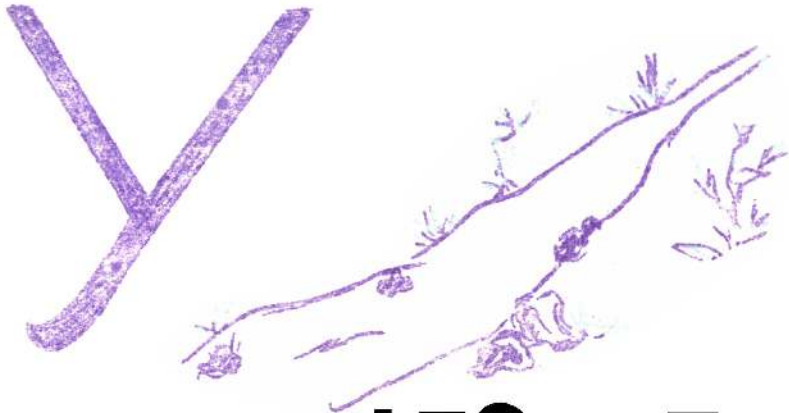


chĩnkĩwa

28



kuxē



ntī?yā

V



va?jna?

31

