

# HAWAII

INTER-ISLAND  
AIRWAYS  
TOURS



MAP  
AND  
AIR LOG

## Beneath Inter-Island Sikorsky Planes Flash a Thousand Scenes

THERE can be no more delightful way of viewing the kaleidoscopic coloring and superlative beauties of the different islands of the Hawaiian Group than from the air. As the plane speeds East or West from Honolulu the eye travels over a scene of almost unbelievable beauty—sparkling coves where coco palms lean seaward, deep shaded valleys, green and tangled with their exotic growth, countless ribboned waterfalls cascading far back against the mountain heights, and broad sloping uplands with checkered fields of sugar cane and pineapples. There is no monotony—each island has distinctive charm which unfolds beneath the speeding plane.

HAMAKUA COAST—HAWAII



PORT ALLEN—KAUAI



JOHN RODGERS AIRPORT—HONOLULU

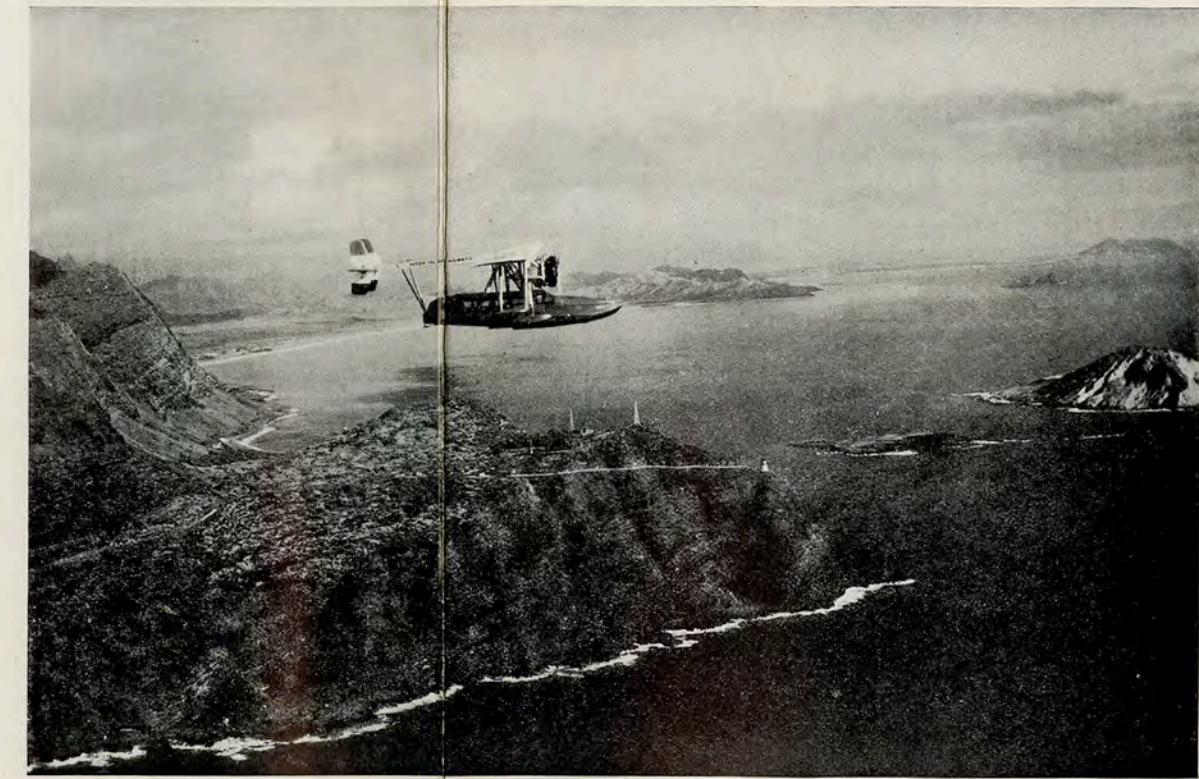


Let us follow the daily route from Honolulu eastward to Hilo on the Island of Hawaii. Rising from the spacious runway of the John Rodgers Airport, we sweep over Honolulu, realizing even more fully its superb setting as, palm-embowered, it nestles within its cradling hills—its face ever turned towards the glittering sea. Famed Diamond Head gives place to lovely Hanauma and, as we glide above the azure channel, the shores of Molokai are ahead of us. Of the beauty of Molokai we gain a haunting glimpse, and now we have slipped across another channel and are gliding smoothly above the widespread cane and pineapple lands of Maui, while to the right of us lies the Island of Lanai. We catch perchance a fleeting view of the awe-inspiring depths of Iao Valley, and then turn our gaze in wonderment

towards the overpowering bulk of mighty Haleakala, within whose stupendous, ten-thousand-foot crater the whole city of Chicago could be comfortably encircled.

Again the blueness of ocean follows as we head for the Island of Hawaii. Kahoolawe and tiny Molokini fade away astern, and again our eyes open upon another marvel—a massive snow-clad peak dominating an intensely tropical coast-line. With its fourteen-thousand-foot vastness as a fitting background, we slip around the flank of great Mauna Kea as we glide past the spectacular Hamakua Coast—the emerald of its spreading cane-lands gashed by its many gulches and its abrupt cliffs seamed by countless waterfalls.

And presently, Hilo—lovely Crescent City by the Sea—lies before us beneath its lofty coconut palms; the landing-field draws nearer and effortlessly we glide to the end of a wonder-journey that time can never banish from our memory.



LEAVING OAHU EN ROUTE TO HILO

Or, let us take the westward route to Kauai—the Garden Isle. From the moment we leave Honolulu we are charmed with vista after vista of leeward Oahu with its deep-shadowed valleys, checkered paddy-fields and the soaring peaks of forest-clad Waianae. We head out to sea and, presently, green-carpeted Kauai beckons to us. Mountain and valley grow clear before our swift approach and almost before we have realized that we are looking at a land of well-nigh incredible beauty we make a landing and the brief journey is over.

Brief indeed—for even the longer run is far too brief. But, what a perfect preface to the automobile trips that follow such happy landings! A wonderland awaits the guest within our hospitable island gates, and thrice-fortunate is he whose mind has been prepared by the fleeting glimpses he has gained of glories he may now explore at his leisure.

### ALL EXPENSE TOURS on the Islands of Hawaii, Maui and Kauai

Effective March 7, 1935

#### ISLAND OF HAWAII One Day Tour (Daily Except Sunday)

Leave Honolulu Rodgers Airport by plane for Hilo at 8:00 a. m. Arrive Hilo 10:45 a. m., motor to Hawaii National Park. Visit Uwekahuna Bluff, Twin Craters, and Kilauea Volcano. Lunch at Volcano House. Return to Hilo and board plane leaving for Honolulu at 2:30 p. m.

Arrive Honolulu at 5:00 p. m.  
Inclusive Cost \$53.50

#### ISLAND OF HAWAII Two Day Tour (Daily Except Sunday)

First Day: Leave Honolulu Rodgers Airport by plane for Hilo at 8:00 a. m. Arrive Hilo at 10:45 a. m. Motor to Hawaii National Park, visit points of interest including Twin Craters, Lava Tube, Kilauea Volcano and Uwekahuna Observatory, thence continue via Honuapo, Waiohinu, Hoopuloa Flow (1926), Alika Flow (1919), Honaunau (ancient city of refuge) and Napoopoo to Kailua, arriving in time for dinner at Kona Inn.

Second Day: Leave Kona Inn 7:30 a. m. and motor to Huehue, thence across the 1801 Lava Flow, through Parker Ranch to Waimea, and continue to Honokaa, thence along the Hamakua Coast to Hilo, boarding plane which departs for Honolulu at 2:30 p. m.

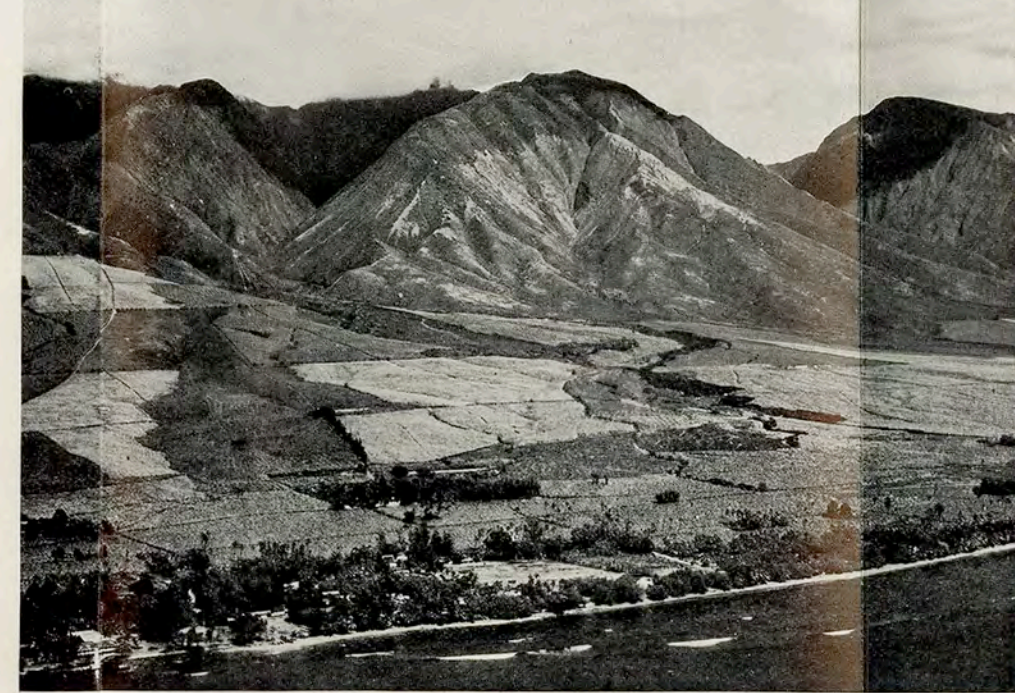
Arrive Honolulu at 5:00 p. m.  
Inclusive Cost \$70.50

#### ISLAND OF MAUI Two Day Tour (Daily Except Sunday)

First Day: Leave Honolulu Rodgers Airport by plane at 8:00 a. m. Arrive Maalaea Airport at 9:15 a. m. Motor to Grand Hotel, thence to Iao Valley. Return to hotel for lunch. Afternoon drive to Summit of Haleakala and return to hotel for dinner and the night.

Second Day: Early breakfast, motor to Keanee Valley and Wailua Falls. Picnic lunch and return via Grand Hotel to Airport, boarding plane which departs for Honolulu at 3:45 p. m.

Arrive Honolulu at 5:00 p. m.  
Inclusive Cost \$56.00



LAHAINA—ISLAND OF MAUI

#### ISLANDS OF MAUI AND HAWAII Three Day Tour (Daily except Sunday)

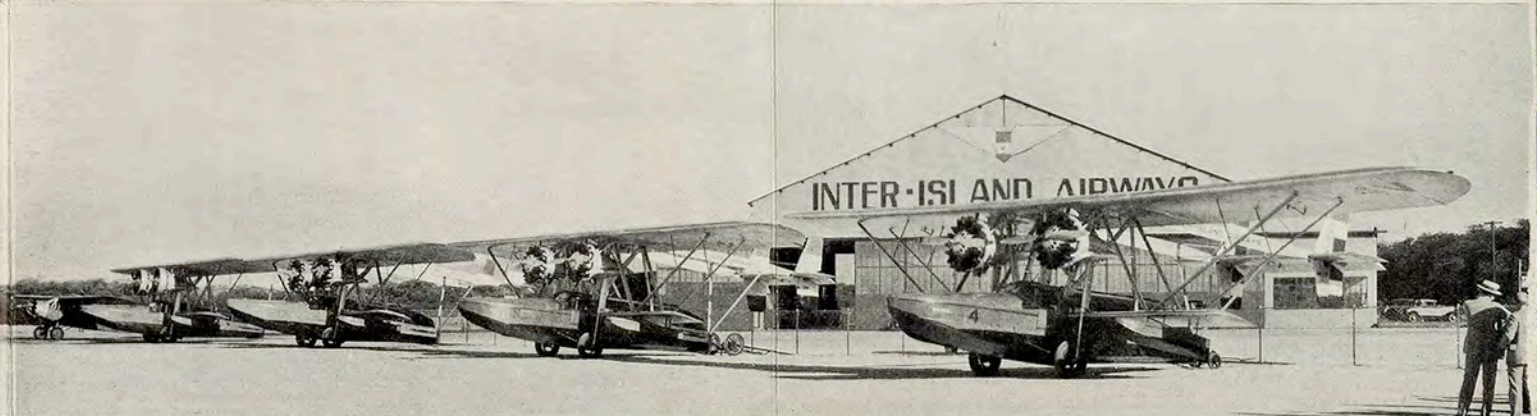
First Day: Leave Honolulu Rodgers Airport by plane at 8:00 a. m. Arrive Maalaea Airport at 9:15 a. m. Motor to Grand Hotel, thence to Iao Valley. Return to hotel for lunch. Afternoon drive to Summit of Haleakala and return to hotel for dinner and the night.

Second Day: Motor to Airport and board plane leaving for Hilo at 9:15 a. m. Arrive Hilo at 10:45 a. m. Motor to Hawaii National Park, visit points of interest including Twin Craters, Lava Tube, Kilauea Volcano, and Uwekahuna Observatory, thence continue via Honuapo, Waiohinu, Hoopuloa flow 1926, Alika flow 1919, Honaunau (ancient city of refuge) and Napoopoo to Kailua, arriving in time for dinner at Kona Inn.

Third Day: Leave Kona Inn 7:30 a. m. and motor to Huehue, thence across the 1801 lava flow, through Parker Ranch to Waimea, and continue to Honokaa, thence along the Hamakua coast to Hilo, boarding plane which departs for Honolulu at 2:30 p. m., arriving at 5:00 p. m.

Inclusive Cost \$96.00

FLEET OF INTER-ISLAND PLANES



#### ISLAND OF KAUAI Two Day Tour (Daily except Sunday)

First Day: Leave Honolulu by plane for Kauai at 8:05 a. m. Arrive Lihue Airport at 9:05 a. m. Motor to Puukapepe, Waimea Canyon, picnic basket lunch at canyon. After luncheon, drive to Kukuilono Park, thence to Lawai Beach, and continue to Lihue Hotel for dinner and the night.

Second Day: After breakfast, motor to Airport and board plane leaving for Honolulu at 9:45 a. m.

Arrive Honolulu at 11:00 a. m.  
Inclusive Cost \$48.50

#### ISLAND OF KAUAI Three Day Tour (Daily except Sunday)

First Day: Leave Honolulu by plane for Kauai at 8:05 a. m. Arrive Lihue Airport at 9:05 a. m. Motor to Puukapepe, Waimea Canyon. Picnic luncheon at canyon. After luncheon drive to Kukuilono Park, thence to Lawai Beach and continue to Lihue Hotel for dinner and the night.

Second Day: Basket luncheon provided by hotel; motor to Hanalei and Haena Caves. Dinner and night at Lihue Hotel.

Third Day: After breakfast, motor to Airport and board plane leaving for Honolulu at 9:45 a. m.

Arrive Honolulu at 11:00 a. m.  
Inclusive Cost \$60.50

LONGER TOURS ARRANGED UPON REQUEST.

#### EQUIPMENT

Sikorsky Amphibion planes are used exclusively in Inter-Island service. These splendid ships are equally at home on land or water. They have two powerful engines, either one of which will fly the ship under any conditions. They are also equipped with radio and keep in constant communication with the operations office at Honolulu.

INTER-ISLAND AIRWAYS LTD  
HONOLULU HAWAII

# HAWAII

INTER-ISLAND  
AIRWAYS  
TOURS

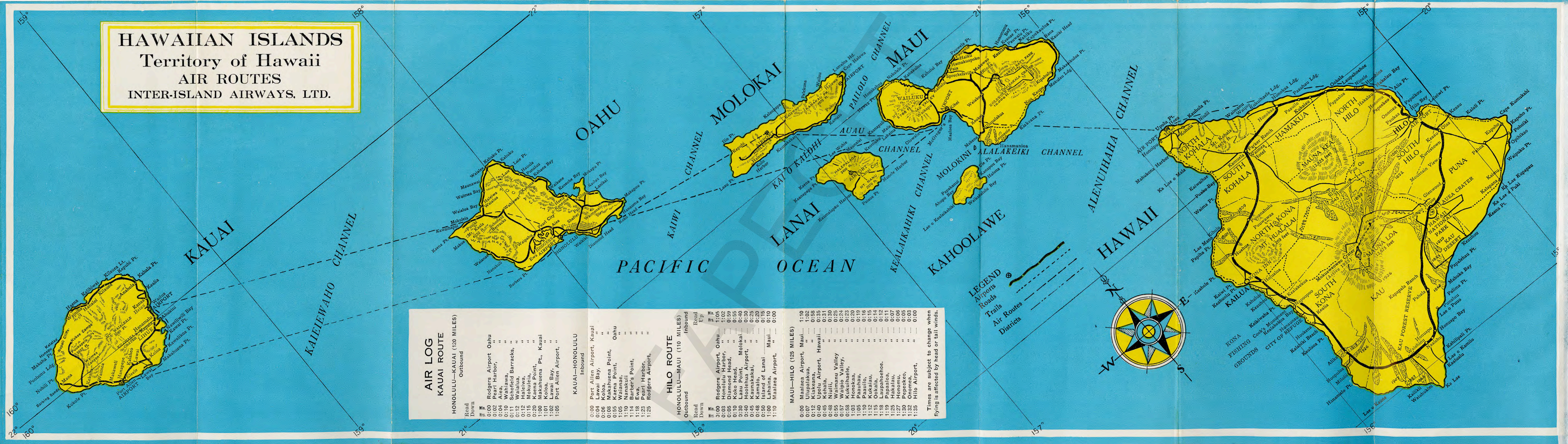


MAP  
AND  
AIR LOG

INTER-ISLAND AIRWAYS LTD  
HONOLULU HAWAII

(PRINTED BY ADVERTISER PUBLISHING CO., LTD., HONOLULU, HAWAII, U.S.A.)

**HAWAIIAN ISLANDS**  
 Territory of Hawaii  
**AIR ROUTES**  
 INTER-ISLAND AIRWAYS, LTD.



**AIR LOG**  
**KAUAI ROUTE**  
 HONOLULU—KAUAI (120 MILES)

| Read Down                  | Read Up                    |
|----------------------------|----------------------------|
| Min.                       | Min.                       |
| 0:00 Rodgers Airport, Oahu | 0:00 Rodgers Airport, Oahu |
| 0:02 Pearl Harbor, "       | 0:02 Pearl Harbor, "       |
| 0:04 Aiea, "               | 0:04 Aiea, "               |
| 0:10 Wahiawa, "            | 0:10 Wahiawa, "            |
| 0:11 Schofield Barracks, " | 0:11 Schofield Barracks, " |
| 0:12 Waiatua, "            | 0:12 Waiatua, "            |
| 0:15 Mokuieia, "           | 0:15 Mokuieia, "           |
| 1:00 Kaena Point, "        | 1:00 Kaena Point, "        |
| 1:01 Makahuena Pt., Kauai  | 1:01 Makahuena Pt., Kauai  |
| 1:02 Koloa, "              | 1:02 Koloa, "              |
| 1:05 Port Allen Airport, " | 1:05 Port Allen Airport, " |

**KAUAI—HONOLULU**

| Read Down                      | Read Up                        |
|--------------------------------|--------------------------------|
| Min.                           | Min.                           |
| 0:00 Port Allen Airport, Kauai | 0:00 Port Allen Airport, Kauai |
| 0:04 Koloa, "                  | 0:04 Koloa, "                  |
| 0:08 Makahuena Point, "        | 0:08 Makahuena Point, "        |
| 1:05 Waiatua, "                | 1:05 Waiatua, "                |
| 1:10 Nanakuli, "               | 1:10 Nanakuli, "               |
| 1:14 Barber's Point, "         | 1:14 Barber's Point, "         |
| 1:18 Ewa, "                    | 1:18 Ewa, "                    |
| 1:23 Pearl Harbor, "           | 1:23 Pearl Harbor, "           |
| 1:25 Rodgers Airport, "        | 1:25 Rodgers Airport, "        |

**HILO ROUTE**  
 HONOLULU—MAUI (110 MILES)

| Read Down                  | Read Up                    |
|----------------------------|----------------------------|
| Min.                       | Min.                       |
| 0:00 Rodgers Airport, Oahu | 0:00 Rodgers Airport, Oahu |
| 0:03 Honolulu Harbor, "    | 0:03 Honolulu Harbor, "    |
| 0:10 Koko Head, "          | 0:10 Koko Head, "          |
| 0:30 Laau Point, Molokai   | 0:30 Laau Point, Molokai   |
| 0:40 Hoolehua Airport, "   | 0:40 Hoolehua Airport, "   |
| 0:45 Kaunakakai, "         | 0:45 Kaunakakai, "         |
| 0:48 Kamao, "              | 0:48 Kamao, "              |
| 1:00 Island of Lanai, Maui | 1:00 Island of Lanai, Maui |
| 1:10 Lahaina, "            | 1:10 Lahaina, "            |
| 1:10 Maalaea Airport, "    | 1:10 Maalaea Airport, "    |

**MAUI—HILO (125 MILES)**

| Read Down                  | Read Up                    |
|----------------------------|----------------------------|
| Min.                       | Min.                       |
| 0:00 Maalaea Airport, Maui | 0:00 Maalaea Airport, Maui |
| 0:07 Ulupalakua, "         | 0:07 Ulupalakua, "         |
| 0:12 Kiakaeana, "          | 0:12 Kiakaeana, "          |
| 0:40 Upolu Airport, Hawaii | 0:40 Upolu Airport, Hawaii |
| 0:45 Kohala, "             | 0:45 Kohala, "             |
| 0:55 Waipio Valley, "      | 0:55 Waipio Valley, "      |
| 0:57 Waipio Valley, "      | 0:57 Waipio Valley, "      |
| 1:02 Honokaa, "            | 1:02 Honokaa, "            |
| 1:05 Paunahau, "           | 1:05 Paunahau, "           |
| 1:10 Paunahau, "           | 1:10 Paunahau, "           |
| 1:12 Kukuihuele, "         | 1:12 Kukuihuele, "         |
| 1:15 Ookala, "             | 1:15 Ookala, "             |
| 1:18 Laupahoehoe, "        | 1:18 Laupahoehoe, "        |
| 1:19 Papaaloa, "           | 1:19 Papaaloa, "           |
| 1:25 Hakalau, "            | 1:25 Hakalau, "            |
| 1:30 Honomu, "             | 1:30 Honomu, "             |
| 1:32 Pepekeo, "            | 1:32 Pepekeo, "            |
| 1:35 Onomea, "             | 1:35 Onomea, "             |
| 1:35 Hilo Airport, "       | 1:35 Hilo Airport, "       |

Times are subject to change when flying is affected by head or tail winds.

**LEGEND**

- Airports (circle with 'A')
- Roads (solid line)
- Trails (dashed line)
- Air Routes (dashed line with arrows)
- Districts (dotted line)



612-CALLES, P.E.  
 CULIACAN LIN..MEX.  
 7/19/35. 52197



# El Cortez

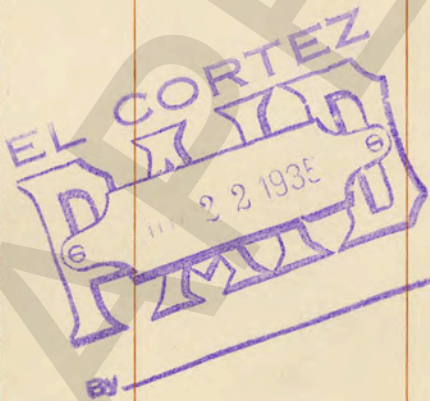
SAN DIEGO'S FINEST

AVERAGE ANNUAL TEMPERATURE 61 DEGREES

Nº 15775

2

| MEMO. |    | DATE     | EXPLANATION | AMT. CHARGED | AMT. CREDITED | BAL. DUE |
|-------|----|----------|-------------|--------------|---------------|----------|
|       | 1  | JUL19-35 | — LDIST     | ★ 3.65       |               | ★ 3.65   |
|       | 2  | JUL19-35 | CAFE —      | ★ 3.61       |               | ★ 7.26   |
|       | 3  | JUL19-35 | — TELGM     | ★ 1.31       |               | ★ 8.57   |
|       | 4  | JUL19-35 | ROOM .. ..  | ★ 5.00       |               | ★ 13.57  |
|       | 5  | JUL20-35 | — LDIST     | ★ 0.25       |               | ★ 13.82  |
|       | 6  | JUL20-35 | ROOM .. ..  | ★ 5.00       |               | ★ 18.82  |
|       | 7  | JUL21-35 | PHONE —     | ★ 0.10       |               | ★ 18.92  |
|       | 8  | JUL21-35 | ROOM .. ..  | ★ 5.00       |               | ★ 23.92  |
|       | 9  |          |             |              |               |          |
|       | 10 |          |             |              |               |          |
|       | 11 |          |             |              |               |          |
|       | 12 |          |             |              |               |          |
|       | 13 |          |             |              |               |          |
|       | 14 |          |             |              |               |          |
|       | 15 |          |             |              |               |          |
|       | 16 |          |             |              |               |          |
|       | 17 |          |             |              |               |          |
|       | 18 |          |             |              |               |          |
|       | 19 |          |             |              |               |          |
|       | 20 |          |             |              |               |          |
|       | 21 |          |             |              |               |          |
|       | 22 |          |             |              |               |          |
|       | 23 |          |             |              |               |          |
|       | 24 |          |             |              |               |          |



PRINTED IN U.S.A. FORM K-370

We appreciate your patronage, and we hope our service has been entirely satisfactory.

THE MANAGEMENT

LAST BALANCE IS AMOUNT DUE UNLESS OTHERWISE INDICATED



542 CALLES P ELIAS  
8/8/35 MEXICO CITY 1L



Guest Account 3  
Royal Hawaiian Hotel, Honolulu

No. **E 5336**

| Memo                 | Date | Explanation      | Amt. Charged | Amt. Credited | Balance Due |
|----------------------|------|------------------|--------------|---------------|-------------|
|                      | 1    | AUG-8-35 Valet   | ★ 2.75       |               | ★ 2.75      |
|                      | 2    | AUG-8-35 Rm&Brd  | ★ 15.00      |               | ★ 17.75     |
|                      | 3    | AUG-9-35 Valet   | ★ 2.75       |               | ★ 20.50     |
|                      | 4    | AUG-9-35 Rm&Brd  | ★ 20.00      |               | ★ 40.50     |
| <i>Chimes</i>        | 5    | AUG10-35 Advance | ★ 0.50       |               | ★ 41.00     |
| <i>Shirley Photo</i> | 6    | AUG10-35 Advance | ★ 1.50       |               | ★ 42.50     |
|                      | 7    | AUG10-35 Phone   | ★ 0.20       |               |             |
|                      | 8    | AUG10-35 Rm&Brd  | ★ 20.00      |               | ★ 62.70     |
|                      | 9    | AUG11-35 Rm&Brd  | ★ 20.00      |               | ★ 82.70     |
|                      | 10   | AUG12-35 Phone   | ★ 0.10       |               |             |
|                      | 11   | AUG12-35 Rm&Brd  | ★ 20.00      |               | ★ 102.80    |
| <i>Rent of Club</i>  | 12   | AUG13-35 SdaBar  | ★ 0.25       |               |             |
|                      | 13   | AUG13-35 Golf    | ★ 1.00       |               | ★ 104.05    |
|                      | 14   | AUG13-35 Rm&Brd  | ★ 20.00      |               | ★ 124.05    |
|                      | 15   | AUG14-35 Rm&Brd  | ★ 20.00      |               | ★ 144.05    |
|                      | 16   |                  |              |               |             |
|                      | 17   |                  |              |               |             |
|                      | 18   |                  |              |               |             |
|                      | 19   |                  |              |               |             |
|                      | 20   |                  |              |               |             |
|                      | 21   |                  |              |               |             |
|                      | 22   |                  |              |               |             |
|                      | 23   |                  |              |               |             |
|                      | 24   |                  |              |               |             |

Last balance is amount due unless otherwise indicated.



542 CALLES MR. P. ELIAS

8/8/35 MEXICO CITY 1/0

20.00


 Guest Account  
 Royal Hawaiian Hotel, Honolulu

4

No. E 5516

| Memo        | Date | Explanation        | Amt. Charged | Amt. Credited | Balance Due |
|-------------|------|--------------------|--------------|---------------|-------------|
|             | 1    |                    |              |               | ★ 144.05    |
|             | 2    | AUG15-35 — L'ndry  | ★ 1.50       |               | ★ 145.55    |
|             | 3    | AUG15-35 VaLet —   | ★ 1.75       |               | ★ 147.30    |
|             | 4    | AUG15-35 — Rm&Brd  | ★ 20.00      |               | ★ 167.30    |
|             | 5    | AUG16-35 GoLf —    | ★ 1.00       |               | ★ 168.30    |
|             | 6    | AUG16-35 — Rm&Brd  | ★ 20.00      |               | ★ 188.30    |
|             | 7    | AUG17-35 VaLet —   | ★ 1.50       |               | ★ 189.80    |
|             | 8    | AUG17-35 — Rm&Brd  | ★ 20.00      |               | ★ 209.80    |
| SERVITOR    | 9    | AUG17-35 Advance — | ★ 1.35       |               | ★ 211.15    |
|             | 10   | AUG18-35 — Rm&Brd  | ★ 20.00      |               | ★ 231.15    |
| shine       | 11   | AUG19-35 Advance — | ★ 0.25       |               | ★ 231.40    |
|             | 12   | AUG19-35 — L'ndry  | ★ 1.50       |               | ★ 232.90    |
|             | 13   | AUG19-35 Phone —   | ★ 0.10       |               |             |
|             | 14   | AUG19-35 — Rm&Brd  | ★ 20.00      |               | ★ 253.00    |
| Club rental | 15   | AUG20-35 GoLf —    | ★ 1.00       |               | ★ 254.00    |
|             | 16   | AUG20-35 — L'ndry  | ★ 9.86       |               |             |
|             | 17   | AUG20-35 — L'ndry  | ★ 2.18       |               | ★ 266.04    |
|             | 18   | AUG20-35 — L'ndry  | ★ 1.75       |               | ★ 267.79    |
|             | 19   | AUG20-35 — L'ndry  | ★ 1.50       |               | ★ 269.29    |
|             | 20   | AUG20-35 — Rm&Brd  | ★ 20.00      |               | ★ 289.29    |
|             | 21   | AUG21-35 — L'ndry  | ★ 0.26       |               | ★ 289.55    |
|             | 22   | AUG21-35 — L'ndry  | ★ 1.75       |               | ★ 291.30    |
|             | 23   | AUG21-35 — Rm&Brd  | ★ 20.00      |               | ★ 311.30    |
|             | 24   |                    |              |               |             |

Last balance is amount due unless otherwise indicated.


 AUG 29 1935  
 ROYAL HAWAIIAN HOTEL





163-L CALLES MR P. E.  
MEXICO CITY 1-L



Guest Account  
Royal Hawaiian Hotel, Honolulu

No. **E 6293**

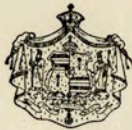
9-8-35 14.00

| Memo | Date | Explanation | Amt. Charged | Amt. Credited | Balance Due |
|------|------|-------------|--------------|---------------|-------------|
|      |      |             |              |               | ★ 223.60    |
|      | 1    |             |              |               |             |
|      | 2    | SEP-5-35    | L'ndry       | ★ 3.37        |             |
|      | 3    | SEP-5-35    | L'ndry       | ★ 1.75        | ★ 228.72    |
|      | 4    | SEP-5-35    | TeLerm       | ★ 3.70        | ★ 232.42    |
|      | 5    | SEP-5-35    | Rm&Brd       | ★ 14.00       | ★ 246.42    |
|      | 6    | SEP-6-35    | L'ndry       | ★ 0.31        |             |
|      | 7    | SEP-6-35    | L'ndry       | ★ 0.63        | ★ 247.36    |
|      | 8    | SEP-6-35    | Rm&Brd       | ★ 14.00       | ★ 261.36    |
|      | 9    | SEP-7-35    | Rm&Brd       | ★ 3.50        | ★ 264.86    |
|      | 10   | SEP-7-35    | Rm&Brd       | ★ 10.50       | ★ 275.36    |
|      | 11   | SEP-8-35    | Rm&Brd       | ★ 14.00       | ★ 289.36    |
|      | 12   | SEP-9-35    | Valet        | ★ 2.00        | ★ 291.36    |
|      | 13   | SEP-9-35    | Rm&Brd       | ★ 14.00       | ★ 305.36    |
|      | 14   | SEP10-35    | Valet        | ★ 2.00        | ★ 307.36    |
|      | 15   | SEP10-35    | L'ndry       | ★ 6.75        |             |
|      | 16   | SEP10-35    | L'ndry       | ★ 1.50        | ★ 315.61    |
|      | 17   | SEP10-35    | Advance      | ★ 0.80        | ★ 316.41    |
|      | 18   | SEP10-35    | Rm&Brd       | ★ 14.00       | ★ 330.41    |
|      | 19   | SEP11-35    | Golf         | ★ 2.00        | ★ 332.41    |
|      | 20   | SEP11-35    | Meal         | ★ 0.25        | ★ 332.66    |
|      | 21   | SEP11-35    | Rm&Brd       | ★ 14.00       | ★ 346.66    |
|      | 22   |             |              |               |             |
|      | 23   |             |              |               |             |
|      | 24   |             |              |               |             |

Last balance is amount due unless otherwise indicated.



183-L CALLES MR. P.E.  
MEXICO CITY 6/8/35



Guest Account  
Royal Hawaiian Hotel, Honolulu 8

No. **E 6413**

14.00 1/L

| Memo | Date | Explanation          | Amt. Charged | Amt. Credited | Balance Due |
|------|------|----------------------|--------------|---------------|-------------|
|      | 1    |                      |              |               | * 346.66    |
|      | 2    | SEP12-35 — L'ndry    | * 1.95       |               |             |
|      | 3    | SEP12-35 — L'ndry    | * 0.75       |               |             |
|      | 4    | SEP12-35 — L'ndry    | * 1.50       |               | * 350.86    |
|      | 5    | SEP12-35 — Rm&Brd    | * 14.00      |               | * 364.86    |
|      | 6    | SEP13-35 — Cash Cr * |              | * 382.36      | * 17.50     |
|      | 7    | SEP13-35 — Rm&Brd *  | * 14.00      |               | * 3.50      |
|      | 8    | SEP14-35 — Rm&Brd *  | * 3.50       |               | * 0.00      |
|      | 9    |                      |              |               | 382.36      |
|      | 10   |                      |              |               |             |
|      | 11   |                      |              |               |             |
|      | 12   |                      |              |               | 387.61      |
|      | 13   |                      |              |               |             |
|      | 14   |                      |              |               |             |
|      | 15   |                      |              |               |             |
|      | 16   |                      |              |               |             |
|      | 17   |                      |              |               |             |
|      | 18   |                      |              |               |             |
|      | 19   |                      |              |               |             |
|      | 20   |                      |              |               |             |
|      | 21   |                      |              |               |             |
|      | 22   |                      |              |               |             |
|      | 23   |                      |              |               |             |
|      | 24   |                      |              |               |             |

Last balance is amount due unless otherwise indicated.



FORM  
NUMBER TS-1  
ONE WAY

MATSON NAVIGATION COMPANY  
LOS ANGELES STEAMSHIP COMPANY THE OCEANIC STEAMSHIP COMPANY

SERIAL  
NUMBER 43924

IDENTIFICATION CHECK  
FIRST CLASS CONTRACT TICKET

FROM LOS ANGELES HARBOR TO HONOLULU T.H.

| NAMES OF PASSENGERS IN FULL | AGE |
|-----------------------------|-----|
| GALLES, SR. GEN. PLUTARCH   | A   |
|                             |     |
|                             |     |

| RESERVATIONS |                         |           |             |
|--------------|-------------------------|-----------|-------------|
| S.S. MALOLO  | CARRIER MATSON NAV. CO. |           |             |
| VOY. 148     | SAILING DATE AUG. 5     |           | HOUR 6:00PM |
| ROOM 52      |                         | BERTH ALL |             |

GROSS VALUE OF TICKET ..... \$175.00

THIS IDENTIFICATION CHECK IS TO BE RETAINED BY PASSENGER  
UNTIL COMPLETION OF VOYAGE.

| WHOLE | HALF | QUARTER | INFANT | SERVANT |
|-------|------|---------|--------|---------|
| 1     | X    | X       | X      | X       |

SELLING AGENT MATSON NAVIGATION COMPANY  
ADDRESS 213 EAST BROADWAY  
CITY SAN DIEGO, CALIFORNIA.  
REMARKS

PREMIUM COLLECTION ENROUTE FOR TRANSFER  
TO SUPERIOR ACCOMMODATIONS

M \_\_\_\_\_ TO \_\_\_\_\_

CARRIER \_\_\_\_\_

PREMIUM  
COLLECTED \_\_\_\_\_

PREMIUM  
ROOM \_\_\_\_\_

BERTH \_\_\_\_\_

AGENT OR  
CARRIER \_\_\_\_\_

AGENCY OR  
STEAMER \_\_\_\_\_

FADEDCET

STEAMSHIP CO.  
AUG  
1935  
SAN DIEGO,  
CAL.

FORM NUMBER **TS-1**  
**ONE WAY**

**MATSON NAVIGATION COMPANY**  
**LOS ANGELES STEAMSHIP COMPANY THE OCEANIC STEAMSHIP COMPANY**  
**IDENTIFICATION CHECK**  
**FIRST CLASS CONTRACT TICKET**

SERIAL NUMBER **45509**

FROM HONOLULU TO LOS ANGELES HARBOR

| NAMES OF PASSENGERS IN FULL         | AGE      |
|-------------------------------------|----------|
| <b>GALLES SR GEN PLUTARCO ELIAS</b> | <b>A</b> |

| RESERVATIONS        |                                |                  |  |
|---------------------|--------------------------------|------------------|--|
| S.S. <b>LURLINE</b> | CARRIER <b>MATSON N V CO</b>   |                  |  |
| VOY. <b>56</b>      | SAILING DATE <b>Sept 14 56</b> | HOUR <b>NOON</b> |  |
| ROOM <b>116</b>     | BERTH <b>ALL</b>               |                  |  |

GROSS VALUE OF TICKET ----- **\$800.00**

THIS IDENTIFICATION CHECK IS TO BE RETAINED BY PASSENGER  
UNTIL COMPLETION OF VOYAGE.

| WHOLE      | HALF         | QUARTER    | INFANT       | SERVANT   |
|------------|--------------|------------|--------------|-----------|
| <b>ONE</b> | <b>X X X</b> | <b>X X</b> | <b>X X X</b> | <b>XX</b> |

SELLING AGENT **CARTER & COOKS LTD**  
ADDRESS \_\_\_\_\_  
CITY **HONOLULU**  
REMARKS **EXCLUSIVE USE.**

PREMIUM COLLECTIONS ENROUTE FOR TRANSFER  
TO SUPERIOR ACCOMMODATIONS

FROM \_\_\_\_\_ TO \_\_\_\_\_

CARRIER \_\_\_\_\_

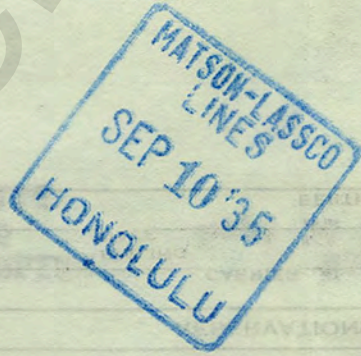
PREMIUM  
COLLECTED \_\_\_\_\_

PREMIUM  
ROOM \_\_\_\_\_

BERTH \_\_\_\_\_

AGENT OR  
OFFICER \_\_\_\_\_

AGENCY OR  
STEAMER \_\_\_\_\_



12202

614-TORREBLANCA, MR & MRS. F.  
 MEXICO CITY  
 7/19/35. 52198

8.00



# El Cortez

SAN DIEGO'S FINEST  
 AVERAGE ANNUAL TEMPERATURE 61 DEGREES

Nº 15776

| MEMO.             |    | DATE     | EXPLANATION  | AMT. CHARGED | AMT. CREDITED | BAL. DUE |
|-------------------|----|----------|--------------|--------------|---------------|----------|
|                   | 1  | JUL19-35 | CAFE —       | 3.09         |               | 3.09     |
|                   | 2  | JUL19-35 | PDOUT — NEWS | 0.15         |               | 3.24     |
|                   | 3  | JUL19-35 | ROOM .. ..   | 8.00         |               | 11.24    |
|                   | 4  | JUL20-35 | CAFE —       | 2.47         |               | 13.71    |
|                   | 5  | JUL20-35 | PDOUT — NEWS | 0.05         |               | 13.76    |
|                   | 6  | JUL20-35 | VALET —      | 1.50         |               | 15.26    |
| <i>Shoe Shine</i> | 7  | JUL20-35 | PDOUT —      | 0.50         |               | 15.76    |
| <i>Shoe Shine</i> | 8  | JUL20-35 | PDOUT —      | 0.50         |               | 16.26    |
|                   | 9  | JUL20-35 | — LDIST      | 1.60         |               | 17.86    |
|                   | 10 | JUL20-35 | VALET —      | 1.50         |               | 19.36    |
|                   | 11 | JUL20-35 | CAFE —       | 6.75         |               | 26.11    |
|                   | 12 | JUL20-35 | PHONE —      | 0.10         |               | 26.21    |
|                   | 13 | JUL20-35 | ROOM .. ..   | 8.00         |               | 34.21    |
| <i>Shoe shine</i> | 14 | JUL21-35 | PDOUT —      | 0.25         |               | 34.46    |
|                   | 15 | JUL21-35 | — LDIST      | 0.25         |               | 34.71    |
|                   | 16 | JUL21-35 | — LDIST      | 0.25         |               | 34.96    |
|                   | 17 | JUL21-35 | PHONE —      | 0.20         |               | 35.16    |
|                   | 18 | JUL21-35 | ROOM .. ..   | 8.00         |               | 43.16    |
| <i>Shoe Shine</i> | 19 | JUL22-35 | PDOUT —      | 0.50         |               | 43.66    |
|                   | 20 | JUL22-35 | VALET —      | 1.00         |               | 44.66    |
|                   | 21 | JUL22-35 | CAFE —       | 5.20         |               | 49.86    |
|                   | 22 |          |              |              |               |          |
|                   | 23 |          |              |              |               |          |
|                   | 24 |          |              |              |               |          |

PRINTED IN U.S.A. FORM K-370

We appreciate your patronage, and we hope our service has been entirely satisfactory.

THE MANAGEMENT

LAST BALANCE IS AMOUNT DUE UNLESS OTHERWISE INDICATED



| CLASS OF SERVICE DESIRED |                |
|--------------------------|----------------|
| DOMESTIC                 | CABLE          |
| TELEGRAM                 | FULL RATE      |
| DAY LETTER               | DEFERRED       |
| NIGHT MESSAGE            | NIGHT LETTER   |
| NIGHT LETTER             | SHIP RADIOGRAM |

Patrons should check class of service desired; otherwise message will be transmitted as a full-rate communication.

# WESTERN UNION

|               |
|---------------|
| CHECK         |
| ACCT'G INFMN. |
| TIME FILED    |

R. B. WHITE  
PRESIDENT

NEWCOMB CARLTON  
CHAIRMAN OF THE BOARD

J. C. WILLEVER  
FIRST VICE-PRESIDENT

Send the following message, subject to the terms on back hereof, which are hereby agreed to

JULY 29 1935

F CASTILLO NAJERA

MEXICAN EMBASSY

WASHINGTON D C

PROXIMO SABADO EMBARCAREMOS PARA ISLAS HAWAI GENERAL CALLES HORTENSIA Y YO STOP AL CRUZAR FRONTERA AUTORIDADES AMERICANAS CALEXICO CON INSTRUCCIONES DARNOS FACILIDADES NO EXTENDIERON NINGUN DOCUMENTO STOP ATENTAMENTE RUEGOLE GESTIONAR GIRENSE ORDENES AUTORIDADES AMERICANAS SAN DIEGO OTORGUENOS DOCUMENTACION NECESARIA ACOSTUMBRADA PARA REGULARIZAR NUESTRA PERMANENCIA Y PROSEGUIR VIAJE ANUNCIADO LUPLICOLE CONTESTARME 335 G STREET CHULA VISTA CALIF GRACIAS AFMTE

FERNANDO TORREBLANCA

## CLASS OF SERVICE

This is a full-rate Telegram or Cablegram unless its deferred character is indicated by a suitable sign above or preceding the address.

# WESTERN UNION

R. B. WHITE  
PRESIDENT

NEWCOMB CARLTON  
CHAIRMAN OF THE BOARD

J. C. WILLEVER  
FIRST VICE-PRESIDENT

## SIGNS

DL = Day Letter  
NM = Night Message  
NL = Night Letter  
LC = Deferred Cable  
NLT = Cable Night Letter  
Ship Radiogram

The filing time as shown in the date line on full-rate telegrams and day letters, and the time of receipt at destination as shown on all messages, is STANDARD TIME.

## Received at

8 by 32 3 exa sandiego calif 1140 am 30 july

FERNADNO TORREBLANCA  
335 E St Chulavista calif

309 SUYO DEPARTMENT TRABAJO DIRIGESE YA TELEGRAFIACIENEE  
OFICIAS MIGRACION SANDIEGO AND HONOLULU DANDO INSTRUCCIONES DENSE USTEDES  
TEDA CLASE FACILIDADES PUNTO DIRIGIME TAMBIEN DEPARTAMENTO  
ESTABO SOLICITANDO ATENCIONES AFECTUOSAMENTE

AMBAJADOR CASTILLO NAJERA  
~~XXXXXX~~  
MP WASHINGTON DC  
1146am

R A D I O G R A M

RECEIVED AT

# Mackay Radio

THE INTERNATIONAL SYSTEM

Commercial  
Cables



All America  
Cables

Postal

Telegraph

15 WORDS FOR THE  
USUAL PRICE OF 10  
**DOMESTIC  
SERVICES**

STANDARD TIME  
INDICATED ON THIS MESSAGE

K2 SFJ 18

DCC-4 LA

HONOLULU 901P SEPT 11 1935

NLT NORMA TORREBLANCA

1075

231 SOUTH WESTMORELAND LOSANGELES

AVISA ALICIA SALDREMOS PROXIMO SABADO LLEGANDO ESA JUEVES DIECINUEVE

RECUERDOS

TORREBLANCA

109A

TO SEND A MESSAGE TELEPHONE TRINITY 0731 OR ANY POSTAL TELEGRAPH OFFICE.  
FOR MESSENGER TELEPHONE POSTAL TELEGRAPH OR RING POSTAL CALL BOX.

FOR MESSAGE DELIVERY ONLY DELIVERED BY AIR MAIL ONLY BOX  
TO SEND A MESSAGE DELIVERED IMMEDIATELY BY AIR MAIL DELIVERY OFFICE

1935

RECEIVED

RECEIVED

RECEIVED

RECEIVED

RECEIVED

RECEIVED

RECEIVED

MACKAY-RADIO  
1935 SEP 12 AM 1 18  
1935 SEP 12 AM 1 22

000-114

RECEIVED



SERVICES  
DOMESTIC  
TO  
RIGHT PRICE OF  
WORDS FOR THE

B A D I O C A M

FORM NUMBER TS-1

MATSON NAVIGATION COMPANY  
LOS ANGELES STEAMSHIP COMPANY THE OCEANIC STEAMSHIP COMPANY

SERIAL NUMBER 43925

ONE WAY

IDENTIFICATION CHECK  
FIRST CLASS CONTRACT TICKET

FROM LOS ANGELES HARBOR TO HONOLULU T.H.

| NAMES OF PASSENGERS IN FULL | AGE |
|-----------------------------|-----|
| TORREBLANCO, SR. FERNANDO   | A   |
| TORREBLANCO, SRA. FERNANDO  | A   |
|                             |     |

| RESERVATIONS |                              |           |        |
|--------------|------------------------------|-----------|--------|
| S.S. MALOLO  | CARRIER MATSON NAVIGATION CO |           |        |
| 143          | SAILING DATE AUG 3.          |           | 6:00PM |
|              |                              |           | HOUR   |
| ROOM 54      |                              | BERTH ALL |        |

GROSS VALUE OF TICKET ..... \$450.00

THIS IDENTIFICATION CHECK IS TO BE RETAINED BY PASSENGER  
UNTIL COMPLETION OF VOYAGE.

| WHOLE | HALF | QUARTER | INFANT | SERVANT |
|-------|------|---------|--------|---------|
| 2     | X    | X       | X      | X       |

SELLING AGENT MATSON NAVIGATION COMPANY  
 ADDRESS 213 EAST BROADWAY  
 CITY SAN DIEGO, CALIFORNIA.  
 REMARKS

PREMIUM COLLECTIONS ENROUTE FOR TRANSFER  
TO SUPERIOR ACCOMMODATIONS

FROM \_\_\_\_\_ TO \_\_\_\_\_

CARRIER \_\_\_\_\_

PREMIUM  
COLLECTED \_\_\_\_\_

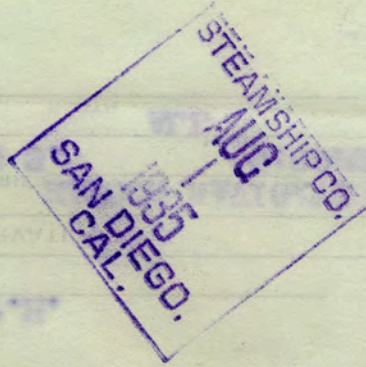
PREMIUM  
ROOM \_\_\_\_\_

BERTH \_\_\_\_\_

AGENT OR  
RESER \_\_\_\_\_

AGENCY OR  
STEAMER \_\_\_\_\_

FADECEFT



# MATSON NAVIGATION COMPANY

FORM NUMBER **TS-1**

LOS ANGELES STEAMSHIP COMPANY THE OCEANIC STEAMSHIP COMPANY

SERIAL NUMBER **45508**

**ONE WAY**

## IDENTIFICATION CHECK FIRST CLASS CONTRACT TICKET

FROM HONOLULU TO LOS ANGELES HARBOR

| NAMES OF PASSENGERS IN FULL | AGE |
|-----------------------------|-----|
| TORREBLANCO SR FERNANDO     | A   |
| TORREBLANCO SRA FERNANDO    | A   |

| RESERVATIONS        |                                |                  |  |
|---------------------|--------------------------------|------------------|--|
| S.S. <u>LURLINE</u> | CARRIER <u>MATSON NAV CO</u>   |                  |  |
| VOY. <u>56</u>      | SAILING DATE <u>Sept 14 35</u> | HOUR <u>NOON</u> |  |
| ROOM <u>118</u>     | BERTH <u>All</u>               |                  |  |

GROSS VALUE OF TICKET ----- \$400.00

THIS IDENTIFICATION CHECK IS TO BE RETAINED BY PASSENGER  
UNTIL COMPLETION OF VOYAGE.

| WHOLE      | HALF             | QUARTER          | INFANT           | SERVANT          |
|------------|------------------|------------------|------------------|------------------|
| <b>TWO</b> | <b>X X X X X</b> | <b>X X X X X</b> | <b>X X X X X</b> | <b>X X X X X</b> |

SELLING AGENT CASTLE & COOKS LTD  
 ADDRESS \_\_\_\_\_  
 CITY HONOLULU  
 REMARKS \_\_\_\_\_

PREMIUM COLLECTIONS ENROUTE FOR TRANSFER  
TO SUPERIOR ACCOMMODATIONS

TO

CARRIER

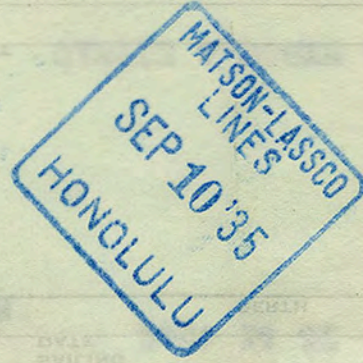
PREMIUM  
COLLECTED

PREMIUM  
ROOM

BERTH

T OR  
ER

AGENCY OR  
STEAMER



**MATSON LINE**  
**PASSENGER SERVICE BILL**

S. S. "MALOLO"

VESSEL

VOYAGE **143**

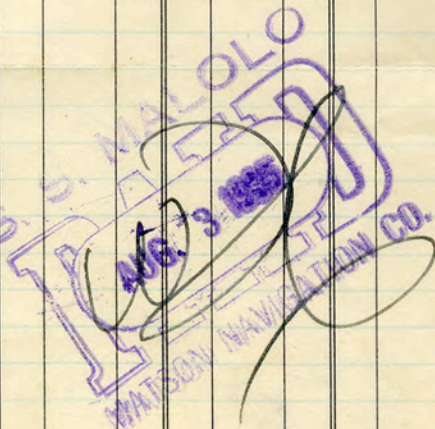
NAME

Torreblanco, Sr. P.

ROOM NO.

374

| ITEMS                   | DATE | DATE  | DATE            | DATE  | DATE | DATE | TOTAL |
|-------------------------|------|-------|-----------------|-------|------|------|-------|
| BAGGAGE                 | 8/3  | 8/5   | 8/6             | 8/7   |      |      |       |
| BAR                     |      |       |                 |       |      |      |       |
| BARBER                  |      |       |                 |       |      |      |       |
| BATHS                   |      |       |                 |       |      |      |       |
| BEAUTY SALON            |      |       |                 |       |      |      |       |
| BOOTBLACK               |      |       |                 |       |      |      |       |
| CIGARS AND TOBACCO      |      |       |                 |       |      |      |       |
| C. O. D. PACKAGES       | 3 21 |       |                 |       |      |      |       |
| DECK CHAIR RENT         |      | 3 00  | 1 50            |       |      |      |       |
| LAUNDRY                 |      |       |                 |       |      |      |       |
| NOVELTY SHOP            |      |       |                 |       |      |      |       |
| RADIOGRAMS              |      |       |                 |       |      |      |       |
| RUG RENT                |      | 3 00  | 1 50            |       |      |      |       |
| SAFETY DEPOSIT BOX RENT |      |       |                 |       |      |      |       |
| SODA FOUNTAIN           |      |       |                 |       |      |      |       |
| TAILOR                  |      | 3 00  | 4 50            | 4 00  |      |      |       |
| TELEPHONE               |      |       | <del>1 50</del> |       |      |      |       |
| TRAPSHOOTING            |      |       |                 |       |      |      |       |
| TODAY'S CHARGES         | 3 21 |       |                 |       |      |      |       |
| PREVIOUS CHARGES        |      |       |                 |       |      |      |       |
| TOTAL CHARGES           |      | 12 21 | 19 71           | 23 71 |      |      |       |
| CREDITS                 |      |       |                 |       |      |      |       |
| DUE TODAY               |      |       |                 |       |      |      |       |



HONOLULU, HAWAII.

August 29<sup>th</sup> 1935. No. 1<sup>18</sup>

**BISHOP NATIONAL BANK OF HAWAII**

AT HONOLULU

PAY TO THE  
ORDER OF

Royal Hawaiian Hotel = \$ 814. 90

= Eight hundred, fourteen &  $\frac{90}{100}$  = = = DOLLARS

J. J. Eblen

FOR DEPOSIT WITH  
**THE BANK OF HAWAII**

TO THE CREDIT OF

**HAWAIIAN HOTELS, LTD.**  
OWNER

ROYAL HAWAIIAN HOTEL

MOANA-SEASIDE HOTEL

MOANA HOTEL

WAIALAE GOLF CLUB

TERRITORIAL HOTEL CO., LTD.

3

PAY TO THE ORDER OF  
YOURSELVES

ALL PRIOR ENDORSEMENTS GUARANTEED

AUG 30 1935

BANK OF HAWAII  
HONOLULU, HAWAII

540 TORREBLANCA FERNANDO & MRS  
8/8/35 MEXICO CITY 2L



Guest Account 19  
Royal Hawaiian Hotel, Honolulu

No. **E 5337**

| Memo                |    | Date     | Explanation | Amt. Charged | Amt. Credited | Balance Due |
|---------------------|----|----------|-------------|--------------|---------------|-------------|
|                     | 1  | AUG-8-35 | SdaBar      | ★ 0.35       |               | ★ 0.35      |
|                     | 2  | AUG-8-35 | Rm&Brd      | ★ 24.00      |               | ★ 24.35     |
| <i>Id &amp; ...</i> | 3  | AUG-9-35 | Baggage     | ★ 9.80       |               | ★ 34.15     |
|                     | 4  | AUG-9-35 | Meal        | ★ 0.50       |               | ★ 34.65     |
| <i>Club car</i>     | 5  | AUG-9-35 | GOLF        | ★ 1.00       |               | ★ 35.65     |
|                     | 6  | AUG-9-35 | L'ndry      | ★ 6.48       |               |             |
|                     | 7  | AUG-9-35 | L'ndry      | ★ 1.51       |               |             |
|                     | 8  | AUG-9-35 | L'ndry      | ★ 4.76       |               | ★ 48.40     |
|                     | 9  | AUG-9-35 | L'ndry      | ★ 2.50       |               |             |
|                     | 10 | AUG-9-35 | L'ndry      | ★ 1.50       |               | ★ 52.40     |
| <i>Beach</i>        | 11 | AUG-9-35 | Advance     | ★ 2.50       |               | ★ 54.90     |
| <i>SERVITOR</i>     | 12 | AUG-9-35 | Advance     | ★ 0.15       |               | ★ 55.05     |
|                     | 13 | AUG-9-35 | Rm&Brd      | ★ 32.00      |               | ★ 87.05     |
| <i>Shine</i>        | 14 | AUG10-35 | Advance     | ★ 0.25       |               | ★ 87.30     |
|                     | 15 | AUG10-35 | Meal        | ★ 0.75       |               | ★ 88.05     |
|                     | 16 | AUG10-35 | Meal        | ★ 0.15       |               | ★ 88.20     |
| <i>cigs</i>         | 17 | AUG10-35 | Rm&Brd      | ★ 32.00      |               | ★ 120.20    |
| <i>SERVITOR</i>     | 18 | AUG11-35 | Advance     | ★ 0.10       |               | ★ 120.30    |
|                     | 19 | AUG11-35 | valet       | ★ 1.25       |               | ★ 121.55    |
|                     | 20 | AUG11-35 | Meal        | ★ 0.75       |               | ★ 122.30    |
| <i>cigs</i>         | 21 | AUG11-35 | Meal        | ★ 0.15       |               | ★ 122.45    |
|                     | 22 | AUG11-35 | Meal        | ★ 0.45       |               |             |
|                     | 23 | AUG11-35 | SdaBar      | ★ 0.25       |               | ★ 123.15    |
|                     | 24 | AUG11-35 | Rm&Brd      | ★ 32.00      |               | ★ 155.15    |

Last balance is amount due unless otherwise indicated.



540 TORREBLANCA FERNANDO WRS  
8/8/35 MEXICO CITY 2-L



Guest Account 20  
Royal Hawaiian Hotel, Honolulu

No. **E 5406**

| Memo            | Date | Explanation      | Amt. Charged | Amt. Credited | Balance Due |
|-----------------|------|------------------|--------------|---------------|-------------|
|                 |      |                  |              |               | ★ 155.15    |
|                 | 1    |                  |              |               | ★ 155.90    |
|                 | 2    | AUG12-35 Meal    | ★ 0.75       |               | ★ 156.15    |
| <i>Blithe</i>   | 3    | AUG12-35 Advance | ★ 0.25       |               | ★ 157.05    |
|                 | 4    | AUG12-35 SdaBar  | ★ 0.90       |               | ★ 157.80    |
|                 | 5    | AUG12-35 Valet   | ★ 0.75       |               | ★ 158.30    |
|                 | 6    | AUG12-35 SdaBar  | ★ 0.25       |               | ★ 158.30    |
|                 | 7    | AUG12-35 Meal    | ★ 0.25       |               | ★ 190.40    |
|                 | 8    | AUG12-35 Phone   | ★ 0.10       |               | ★ 193.00    |
|                 | 9    | AUG12-35 Rm&Brd  | ★ 32.00      |               | ★ 193.75    |
| <i>Barber</i>   | 10   | AUG13-35 Advance | ★ 2.60       |               | ★ 193.75    |
|                 | 11   | AUG13-35 Meal    | ★ 0.75       |               | ★ 193.75    |
|                 | 12   | AUG13-35 Phone   | ★ 0.20       |               | ★ 193.75    |
|                 | 13   | AUG13-35 Rm&Brd  | ★ 32.00      |               | ★ 225.95    |
|                 | 14   | AUG14-35 Meal    | ★ 0.75       |               | ★ 226.70    |
| <i>magnesia</i> | 15   | AUG14-35 Advance | ★ 0.45       |               | ★ 227.15    |
|                 | 16   | AUG14-35 Rm&Brd  | ★ 32.00      |               | ★ 259.15    |
|                 | 17   | AUG14-35 Meal    | ★ 0.75       |               | ★ 259.90    |
|                 | 18   |                  |              |               |             |
|                 | 19   |                  |              |               |             |
|                 | 20   |                  |              |               |             |
|                 | 21   |                  |              |               |             |
|                 | 22   |                  |              |               |             |
|                 | 23   |                  |              |               |             |
|                 | 24   |                  |              |               |             |

Last balance is amount due unless otherwise indicated.



540 TORREBLANCHA FERNANDEZ ST. S.

Royal Hawaiian Hotel, Honolulu

8/8/35 MEXICO CITY 2/1

No. **E 5517**

32.00



| Memo                    | Date     | Explanation | Amt. Charged | Amt. Credited | Balance Due |
|-------------------------|----------|-------------|--------------|---------------|-------------|
|                         |          |             |              |               | ★ 259.90    |
|                         |          |             |              |               | ★ 260.80    |
| <i>Shine</i>            | AUG15-35 | Meal        | ★ 0.90       |               | ★ 261.55    |
|                         | AUG15-35 | Advance     | ★ 0.75       |               | ★ 262.00    |
|                         | AUG15-35 | SdaBar      | ★ 0.45       |               | ★ 294.00    |
|                         | AUG15-35 | Rm&Brd      | ★ 32.00      |               | ★ 294.35    |
|                         | AUG15-35 | SdaBar      | ★ 0.35       |               | ★ 295.10    |
| <i>film</i>             | AUG16-35 | Meal        | ★ 0.75       |               | ★ 304.10    |
|                         | AUG16-35 | Advance     | ★ 9.00       |               | ★ 304.55    |
|                         | AUG16-35 | SdaBar      | ★ 0.45       |               | ★ 336.55    |
|                         | AUG16-35 | Rm&Brd      | ★ 32.00      |               | ★ 337.30    |
|                         | AUG17-35 | Meal        | ★ 0.75       |               | ★ 338.05    |
|                         | AUG17-35 | Meal        | ★ 0.75       |               | ★ 370.05    |
|                         | AUG17-35 | Rm&Brd      | ★ 32.00      |               | ★ 370.80    |
|                         | AUG17-35 | Meal        | ★ 0.75       |               | ★ 372.15    |
|                         | AUG17-35 | SdaBar      | ★ 1.35       |               | ★ 404.25    |
|                         | AUG18-35 | Phone       | ★ 0.10       |               | ★ 405.00    |
|                         | AUG18-35 | Rm&Brd      | ★ 32.00      |               | ★ 437.40    |
|                         | AUG19-35 | Meal        | ★ 0.75       |               | ★ 438.15    |
|                         | AUG19-35 | Phone       | ★ 0.40       |               | ★ 438.65    |
|                         | AUG19-35 | Rm&Brd (+)  | ★ 32.00      |               | ★ 470.85    |
| <i>porter's Service</i> | AUG20-35 | Advance     | ★ 0.75       |               |             |
|                         | AUG20-35 | Meal        | ★ 0.50       |               |             |
|                         | AUG20-35 | Phone       | ★ 0.20       |               |             |
|                         | AUG20-35 | Rm&Brd      | ★ 32.00      |               |             |

Last balance is amount due unless otherwise indicated.



540 TORREBLANCHA FERNANDO MRS.

8/8/35 MEXICO CITY



Guest Account

Royal Hawaiian Hotel, Honolulu

No. E 5749

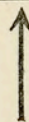
32.00 2/L

| Memo | Date | Explanation     | Amt. Charged | Amt. Credited | Balance Due |
|------|------|-----------------|--------------|---------------|-------------|
|      |      |                 |              |               | ★ 470.85    |
|      | 1    |                 |              |               | ★ 471.60    |
|      | 2    | AUG21-35 Meal   | ★ 0.75       |               | ★ 503.60    |
|      | 3    | AUG21-35 Rm&Brd | ★ 32.00      |               |             |
|      | 4    |                 |              |               |             |
|      | 5    |                 |              |               |             |
|      | 6    |                 |              |               |             |
|      | 7    |                 |              |               |             |
|      | 8    |                 |              |               |             |
|      | 9    |                 |              |               |             |
|      | 10   |                 |              |               |             |
|      | 11   |                 |              |               |             |
|      | 12   |                 |              |               |             |
|      | 13   |                 |              |               |             |
|      | 14   |                 |              |               |             |
|      | 15   |                 |              |               |             |
|      | 16   |                 |              |               |             |
|      | 17   |                 |              |               |             |
|      | 18   |                 |              |               |             |
|      | 19   |                 |              |               |             |
|      | 20   |                 |              |               |             |
|      | 21   |                 |              |               |             |
|      | 22   |                 |              |               |             |
|      | 23   |                 |              |               |             |
|      | 24   |                 |              |               |             |

814.90

PAID  
AUG 29 1935  
ROYAL HAWAIIAN HOTEL

Last balance is amount due unless otherwise indicated.



181-L

~~540~~ TORREBLANCA FERNANDO MRS.

Royal Hawaiian Hotel, Honolulu

MEXICO CITY 8-8-35



No. E 5816

~~32.00~~ 2-L

28<sup>00</sup>

8-23 AB

| Memo | Date     | Explanation | Amt. Charged | Amt. Credited | Balance Due |
|------|----------|-------------|--------------|---------------|-------------|
|      |          |             |              |               | ★ 503.60    |
| 1    |          |             |              |               | ★ 504.35    |
| 2    | AUG22-35 | Meal        | ★ 0.75       | ✓             | ★ 504.50    |
| 3    | AUG22-35 | Meal        | ★ 0.15       | ✓             | ★ 536.50    |
| 4    | AUG22-35 | Rm&Brd      | ★ 32.00      | ✓             | ★ 537.25    |
| 5    | AUG23-35 | Meal        | ★ 0.75       | ✓             | ★ 538.00    |
| 6    | AUG23-35 | Advance     | ★ 0.75       | ✓             | ★ 567.00    |
| 7    | AUG23-35 | Rm&Brd      | ★ 29.00      | ✓             | ★ 567.50    |
| 8    | AUG24-35 | Meal        | ★ 0.50       | ✓             | ★ 567.95    |
| 9    | AUG24-35 | SdaBar      | ★ 0.45       | ✓             | ★ 568.95    |
| 10   | AUG24-35 | Valet       | ★ 1.00       | ✓             | ★ 572.59    |
| 11   | AUG24-35 | L'drv       | ★ 3.64       | ✓             | ★ 600.59    |
| 12   | AUG24-35 | Rm&Brd      | ★ 28.00      | ✓             | ★ 600.61    |
| 13   | AUG25-35 | Advance     | ★ 0.02       | ✓             | ★ 601.11    |
| 14   | AUG25-35 | Meal        | ★ 0.50       | ✓             | ★ 629.11    |
| 15   | AUG25-35 | Rm&Brd      | ★ 28.00      | ✓             | ★ 629.86    |
| 16   | AUG26-35 | Meal        | ★ 0.75       | ✓             | ★ 630.16    |
| 17   | AUG26-35 | SdaBar      | ★ 0.30       | ✓             | ★ 658.16    |
| 18   | AUG26-35 | Rm&Brd      | ★ 28.00      | ✓             | ★ 658.66    |
| 19   | AUG27-35 | Meal        | ★ 0.50       | ✓             | ★ 687.06    |
| 20   | AUG27-35 | Phone       | ★ 0.40       | ✓             | ★ 687.56    |
| 21   | AUG27-35 | Rm&Brd      | ★ 28.00      | ✓             | ★ 689.06    |
| 22   | AUG28-35 | Meal        | ★ 0.50       | ✓             |             |
| 23   | AUG28-35 | SdaBar      | ★ 1.50       | ✓             |             |
| 24   |          |             |              |               |             |

Porter's Service

Stamp

Last balance is amount due unless otherwise indicated.



181-L TORREBLANCA FERNANDO & MRS

Guest Account

24

Royal Hawaiian Hotel, Honolulu

MEXICO CITY 8-8-35



No. **E 5958**

2-L 28.00

8-23-35

| Memo | Date      | Explanation | Amt. Charged | Amt. Credited | Balance Due |
|------|-----------|-------------|--------------|---------------|-------------|
|      |           |             |              |               | ☆ 689.06    |
|      | AUG 28-35 | Rm & Brd    | ☆ 28.00      |               | ☆ 717.06    |
| 1    |           |             |              |               |             |
| 2    |           |             |              |               |             |
| 3    |           |             |              |               |             |
| 4    |           |             |              |               |             |
| 5    |           |             |              |               |             |
| 6    |           |             |              |               |             |
| 7    |           |             |              |               |             |
| 8    |           |             |              |               |             |
| 9    |           |             |              |               |             |
| 10   |           |             |              |               |             |
| 11   |           |             |              |               |             |
| 12   |           |             |              |               |             |
| 13   |           |             |              |               |             |
| 14   |           |             |              |               |             |
| 15   |           |             |              |               |             |
| 16   |           |             |              |               |             |
| 17   |           |             |              |               |             |
| 18   |           |             |              |               |             |
| 19   |           |             |              |               |             |
| 20   |           |             |              |               |             |
| 21   |           |             |              |               |             |
| 22   |           |             |              |               |             |
| 23   |           |             |              |               |             |
| 24   |           |             |              |               |             |

Last balance is amount due unless otherwise indicated.



181/L TORREBLANCA F. &amp; MRS

Guest Account

25

MEXICO CITY 8/6/35 2/L

Royal Hawaiian Hotel, Honolulu

No. **E 5978**

25.00



| Memo                   | Date | Explanation        | Amt. Charged | Amt. Credited | Balance Due |
|------------------------|------|--------------------|--------------|---------------|-------------|
|                        | 1    |                    |              |               | * 717.06    |
|                        | 2    | AUG29-35 — Cash Cr |              | * 503.60      | * 213.46    |
|                        | 3    | AUG29-35 Meal —    | * 0.50       |               | * 213.96    |
| <i>Group</i>           | 4    | AUG29-35 Advance — | * 3.50       |               | * 217.46    |
| <b>TAXI</b>            | 5    | AUG29-35 Advance — | * 5.15       |               | * 222.61    |
|                        | 6    | AUG29-35 — Sda Bar | * 1.70       |               | * 224.31    |
|                        | 7    | AUG29-35 Phone —   | * 0.10       |               |             |
|                        | 8    | AUG29-35 — Rm&Brd  | * 28.00      |               | * 252.41    |
|                        | 9    | AUG29-35 — Sda Bar | * 30.25      |               |             |
|                        | 10   | AUG29-35 Meal —    | * 5.00       |               | * 287.66    |
|                        | 11   | AUG30-35 Meal —    | * 0.50       |               | * 288.16    |
| <i>Theatre tickets</i> | 12   | AUG30-35 Advance — | * 2.90       |               | * 291.06    |
|                        | 13   | AUG30-35 — Cash Cr |              | * 2.90        | * 288.16    |
|                        | 14   | AUG30-35 Meal —    | * 2.00       |               |             |
|                        | 15   | AUG30-35 — Sda Bar | * 0.90       |               | * 291.06    |
|                        | 16   | AUG30-35 — Rm&Brd  | * 28.00      |               | * 319.06    |
| <i>Shine</i>           | 17   | AUG31-35 Advance — | * 0.25       |               | * 319.31    |
|                        | 18   | AUG31-35 Meal —    | * 0.50       |               | * 319.81    |
|                        | 19   | AUG31-35 — Sda Bar | * 0.45       |               | * 320.26    |
| <i>Group</i>           | 20   | AUG31-35 Advance — | * 1.00       |               | * 321.26    |
|                        | 21   | AUG31-35 Meal —    | * 0.50       |               | * 321.76    |
|                        | 22   | AUG31-35 Phone —   | * 0.60       |               |             |
|                        | 23   | AUG31-35 — Rm&Brd  | * 28.00      |               | * 350.36    |
|                        | 24   | SEP-1-35 Meal —    | * 0.50       |               | * 350.86    |

Last balance is amount due unless otherwise indicated.



181/L TORREBLANCA F. & W.S.  
 MEXICO CITY 8/8/35 2/L  
 28.00



Guest Account 26  
 Royal Hawaiian Hotel, Honolulu

No. **E 6204**

| Memo | Date | Explanation      | Amt. Charged | Amt. Credited | Balance Due |
|------|------|------------------|--------------|---------------|-------------|
|      |      |                  |              |               | ☆ 350.86    |
|      | 1    |                  |              |               | ☆ 351.31    |
|      | 2    | SEP-1-35 SdaBar  | ★ 0.45       | ✓             | ☆ 379.31    |
|      | 3    | SEP-1-35 Rm&Drd  | ★ 28.00      | ✓             | ☆ 379.81    |
|      | 4    | SEP-2-35 Meal    | ★ 0.50       | ✓             | ☆ 380.31    |
|      | 5    | SEP-2-35 Advance | ★ 0.50       | ✓             | ☆ 380.71    |
|      | 6    | SEP-2-35 Advance | ★ 0.40       | ✓             | ☆ 408.71    |
|      | 7    | SEP-2-35 Rm&Drd  | ★ 28.00      | ✓             | ☆ 411.71    |
|      | 8    | SEP-3-35 Meal    | ★ 3.00       | ✓             | ☆ 413.51    |
|      | 9    | SEP-3-35 SdaBar  | ★ 1.80       | ✓             | ☆ 441.51    |
|      | 10   | SEP-3-35 Rm&Drd  | ★ 28.00      | ✓             | ☆ 442.01    |
|      | 11   | SEP-3-35 Meal    | ★ 0.50       | ✓             | ☆ 442.51    |
|      | 12   | SEP-4-35 Meal    | ★ 0.50       | ✓             | ☆ 470.71    |
|      | 13   | SEP-4-35 Rm&Drd  | ★ 28.00      | ✓             |             |
|      | 14   | SEP-4-35 Phone   | ★ 0.20       | ✓             |             |
|      | 15   |                  |              |               |             |
|      | 16   |                  |              |               |             |
|      | 17   |                  |              |               |             |
|      | 18   |                  |              |               |             |
|      | 19   |                  |              |               |             |
|      | 20   |                  |              |               |             |
|      | 21   |                  |              |               |             |
|      | 22   |                  |              |               |             |
|      | 23   |                  |              |               |             |
|      | 24   |                  |              |               |             |

*Shirine*  
 SERVITOR

Last balance is amount due unless otherwise indicated.



181-L TORREBLANCA MR MRS

MEXICO CITY 8-8-35

2-L 28.00 24.00


 Guest Account 21  
 Royal Hawaiian Hotel, Honolulu

No. E 6291

| Memo                   | Date      | Explanation | Amt. Charged | Amt. Credited | Balance Due |
|------------------------|-----------|-------------|--------------|---------------|-------------|
|                        |           |             |              |               | * 470.71    |
| 1                      |           |             |              |               | * 471.21    |
| 2                      | SEP-5-35  | Meal        | * 0.50       |               | * 499.21    |
| 3                      | SEP-5-35  | Rm&Brd      | * 28.00      |               | * 499.71    |
| 4                      | SEP-6-35  | Meal        | * 0.50       |               | * 499.86    |
| <i>cigarettes</i>      | SEP-6-35  | Meal        | * 0.15       |               | * 527.86    |
| 6                      | SEP-6-35  | Rm&Brd      | * 28.00      |               | * 527.96    |
| 7                      | SEP-6-35  | Phone       | * 0.10       |               | * 534.96    |
| 8                      | SEP-7-35  | Rm&Brd      | * 7.00       | X             | * 535.46    |
| 9                      | SEP-7-35  | Meal        | * 0.50       |               | * 540.46    |
| <i>2 surf lessons</i>  | SEP-7-35  | Advance     | * 5.00       |               | * 540.91    |
| 11                     | SEP-7-35  | SdaBar      | * 0.45       |               | * 561.91    |
| 12                     | SEP-7-35  | Rm&Brd      | * 21.00      | X             | * 562.41    |
| 13                     | SEP-8-35  | Meal        | * 0.50       |               | * 562.86    |
| 14                     | SEP-8-35  | SdaBar      | * 0.45       |               | * 590.86    |
| 15                     | SEP-8-35  | Rm&Brd      | * 28.00      |               | * 591.36    |
| 16                     | SEP-9-35  | Meal        | * 0.50       |               | * 619.36    |
| 17                     | SEP-9-35  | Rm&Brd      | * 28.00      |               | * 619.86    |
| 18                     | SEP-10-35 | Meal        | * 0.50       |               | * 623.86    |
| <i>drugstore</i>       | SEP-10-35 | Advance     | * 4.00       |               | * 552.86    |
| <i>O. Brady's Rm B</i> | SEP-10-35 | Adjust      |              | * 71.00       | * 576.86    |
| 21                     | SEP-10-35 | Rm&Brd      | * 24.00      |               | * 577.36    |
| 22                     | SEP-11-35 | Meal        | * 0.50       |               | * 580.36    |
| 23                     | SEP-11-35 | Meal        | * 3.00       |               | * 582.55    |
| 24                     | SEP-11-35 | Tel'orm     | * 2.19       |               |             |

Last balance is amount due unless otherwise indicated.



181/L TORREBLANCA MR. & MRS. F.

Guest Account

Royal Hawaiian Hotel, Honolulu

MEXICO CITY 8/8/35



No. **E 6414**

24.00 2/L

| Memo | Date | Explanation     | Amt. Charged | Amt. Credited | Balance Due |
|------|------|-----------------|--------------|---------------|-------------|
|      |      |                 |              |               | * 582.55    |
|      | 1    |                 |              |               |             |
|      | 2    | SEP11-35 Rm&Brd | * 24.00      |               | * 606.55    |
|      | 3    |                 |              |               |             |
|      | 4    |                 |              |               |             |
|      | 5    |                 |              |               |             |
|      | 6    |                 |              |               |             |
|      | 7    |                 |              |               |             |
|      | 8    |                 |              |               |             |
|      | 9    |                 |              |               |             |
|      | 10   |                 |              |               |             |
|      | 11   |                 |              |               |             |
|      | 12   |                 |              |               |             |
|      | 13   |                 |              |               |             |
|      | 14   |                 |              |               |             |
|      | 15   |                 |              |               |             |
|      | 16   |                 |              |               |             |
|      | 17   |                 |              |               |             |
|      | 18   |                 |              |               |             |
|      | 19   |                 |              |               |             |
|      | 20   |                 |              |               |             |
|      | 21   |                 |              |               |             |
|      | 22   |                 |              |               |             |
|      | 23   |                 |              |               |             |
|      | 24   |                 |              |               |             |

Last balance is amount due unless otherwise indicated.



181-L TORREBLANCA MR MRS

Guest Account

29

Royal Hawaiian Hotel, Honolulu

MEXICO CITY 8-8-35

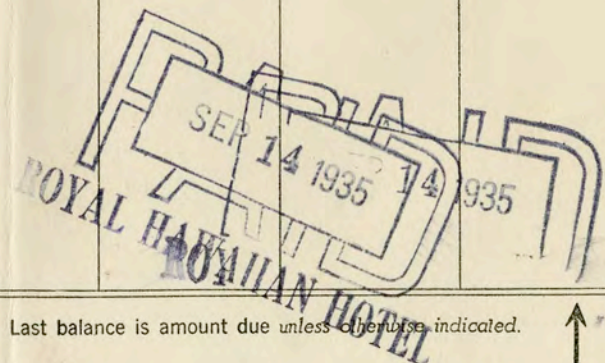
No. E 6427

-L 24.00



| Memo | Date     | Explanation | Amt. Charged | Amt. Credited | Balance Due |
|------|----------|-------------|--------------|---------------|-------------|
|      |          |             |              |               | ★ 606.55    |
| 1    |          |             |              |               | ★ 607.05    |
| 2    | SEP12-35 | Meal        | ★ 0.50       |               | ★ 607.55    |
| 3    | SEP12-35 | Meal        | ★ 0.50       |               | ★ 607.80    |
| 4    | SEP12-35 | Meal        | ★ 0.25       |               | ★ 631.80    |
| 5    | SEP12-35 | Rm&Drd      | ★ 24.00      |               | ★ 633.55    |
| 6    | SEP12-35 | SdaDar      | ★ 1.75       |               | ★ 634.05    |
| 7    | SEP13-35 | Meal        | ★ 0.50       |               | ★ 634.80    |
| 8    | SEP13-35 | Meal        | ★ 0.75       |               | ★ 665.30    |
| 9    | SEP13-35 | CashOr      | ★            | ★ 665.30      | ★ 30.50     |
| 10   | SEP13-35 | Phone       | ★ 0.10       |               | ★ 6.40      |
| 11   | SEP13-35 | Rm&Drd      | ★ 24.00      |               | ★ 0.40      |
| 12   | SEP14-35 | Rm&Drd      | ★ 6.00       |               | ★ 4.60      |
| 13   | SEP14-35 | Advance     | ★ 5.00       |               | ★ 5.10      |
| 14   | SEP14-35 | Meal        | ★ 0.50       |               |             |
| 15   |          |             |              |               |             |
| 16   |          |             |              |               |             |
| 17   |          |             |              |               |             |
| 18   |          |             |              |               |             |
| 19   |          |             |              |               |             |
| 20   |          |             |              |               |             |
| 21   |          |             |              |               |             |
| 22   |          |             |              |               |             |
| 23   |          |             |              |               |             |
| 24   |          |             |              |               |             |

radio rental

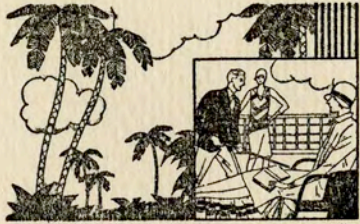


Last balance is amount due unless otherwise indicated.

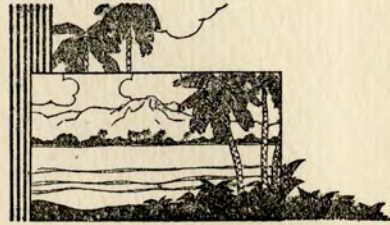




PASSENGER LIST



Souvenir  
PASSENGER  
LIST



## S. S. MALOLO

VOYAGE 143

Sailing from Los Angeles Harbor, Saturday, August 3, 1935,  
FOR HONOLULU, T. H.

### OFFICERS

CAPTAIN A. G. TOWNSEND, Commander  
W. J. NORBERG, U.S.N.R., Chief Officer  
GEO. GRONVOLD, U.S.N.R., Chief Engineer

R. C. POYNOR, U.S.N.R., Asst. Chief Engr.    R. M. WINN, Purser  
C. CHRISTIAN, Chief Steward                J. E. HIGGINS, Asst. Purser  
C. MARTIN, Cabin Class Steward           M. C. HAYES, Cabin Class Purser  
H. SCHURZ, Executive Chef                 DR. J. B. WILEY, Surgeon

### FIRST CLASS

#### A

Andrade, Mr. William G.  
Arnold, Dr. Harry L.  
Avis, Miss Josephine

#### B

Babcock, Mrs. Henry K.  
Bates, Mr. Merrill F.  
Bates, Mrs. Muriel B.  
Bates, Master William M.  
Baker, Mr. George Barr  
Beckley, Mr. Geo. C.  
Benson, Mr. H. P.  
Benson, Mrs. H. P.  
Berrey, Miss Julia M.  
Bolster, Mrs. Gertrude B.  
Borough, Miss Helen M.  
Boyle, Mrs. E. A. Langton  
Brennan, Mr. William C.  
Bryant, Miss Frances E.

#### C

Cain, Mrs. Grace S.  
Cain, Miss Muriel  
Callahan, Mrs. Lawrence  
Callahan, Mr. Lawrence  
Calles, Sr. Gen. Plutarco Elias

Colgrove, Mr. Alfred S.  
Cheatham, Mrs. Elmer M.  
Cheatham, Mr. Elmer M.  
Chamberlain, Miss Mary  
Crew, Miss Roberta Southerland

#### D

Darcy, Miss Ellen  
de Paz, Mr. Joseph  
de Paz, Mrs. Medina  
Driver, Mr. Leland H.

#### E

Edwards, Miss Pauline K.  
Elston, Mr. Henry

#### F

Farley, Mr. James A.  
Farley, Mrs. James A.  
Farry, Mrs. Louise Mattei  
Farry, Miss Carol  
Fisher, Miss Bessie  
Fite, Mrs. H. B.  
Found, Miss Ruth M.  
Ford, Mrs. Mary  
Ford, Miss Barbara

#### H

Hagenow, Miss Leona  
Haddon, Mrs. Sarah T.  
Hasser, Miss Bernadine M.  
Henderson, Mrs. Robert B.  
Henderson, Mr. Joseph R.  
Henderson, Mrs. Joseph R.  
Henderson, Miss Josephine R.  
Hiers, Mrs. H. R.  
Hill, Dr. S. M.  
Hill, Mrs. S. M.  
Hill, Miss Mary Jane  
Hilts, Miss Harriet  
Holm, Miss Hanya  
Howard, Mrs. Van H.  
Hodgson, Mr. Ralph E.  
Hughes, Miss Maude  
Hurlbut, Mr. Robert S.  
Hurlbut, Mrs. Robert S.

#### J

Jacobs, Miss Esther  
Johnson, Mr. Harry W.  
Johnson, Mrs. Harry W.  
Johnson, Miss MaBelle E.

#### K

Kaufman, Mr. William  
Kaufman, Mrs. Joel  
Kaufman, Miss Joelle  
Kellerman, Mr. Phil L.  
Kennedy, Mrs. Stanley C.  
Kennedy, Miss Patricia  
Klein, Mrs. Eleanor  
Krupp, Dr. Henry C.  
Kuser, Mr. Dryden

#### L

Leipziger, Miss Pauline  
Leishman, Rev. James  
Lemann, Dr. I. I.  
Lemann, Mrs. I. I.  
Lemann, Mr. Paul B.  
Lemann, Mrs. Paul B.  
Lewis, Mr. Jos. G.  
Lewis, Mrs. Jos. G.  
Lewis, Miss Ruth  
Lindsay, Miss Edith M.  
Lofsky, Mr. J.  
Lofsky, Mrs. J.  
Lofsky, Miss Sunya  
Long, Mrs. Louis  
Long, Miss Johannah  
Love, Mr. William A.  
Love, Mrs. William A.

#### M

MacKechnie, Mrs. Andrew  
MacKechnie, Miss Louise  
Mather, Mrs. E. D.  
May, Mr. Phil  
May, Mrs. Phil  
McGuinnes, Dr. Geo. A.  
McGuinnes, Mrs. Geo. A.  
McGarvey, Mr. Harmon Paul  
McIlree, Mr. Paul L.  
McIlree, Mrs. Paul L.  
McIlree, Miss Ann  
McNamara, Mr. Fred  
McNamara, Mrs. Fred  
Merrick, Miss Alice P.  
Michopulos, Mrs. Peggy  
Mitchell, Mr. Eddie  
Moore, Mr. S. W.  
Moncado, Dr. H. C.  
Murphree, Miss Arline  
Murphy, Miss Laura

#### O

O'Connor, Mr. Ambrose  
Olive, Mr. George S.  
Olive, Mrs. George S.  
Olive, Mr. George S., Jr.

#### P

Palmer, Mrs. Aino M.  
Palmer, Miss Regina D.  
Parsons, Mr. J. H.  
Parsons, Mrs. J. H.  
Poindexter, Governor Joseph B.

#### R

Radke, Miss Frieda  
Randoph, Mrs. P. F.  
Randolph, Miss Arah Joan  
Richardson, Mr. Bonner  
Richardson, Mrs. Bonner  
Richardson, Miss Miriam  
Richardson, Mr. David B., Jr.  
Robertson, Mrs. J. R.  
Robertson, Miss Sally  
Rosenwald, Mrs. B.  
Rosenblatt, Mr. Solomon  
Roughton, Miss Edith

#### S

Sands, Miss Dorothy  
Scarff, Mr. Paul B.  
Scarff, Mrs. Paul B.  
Scott, Mr. Henry Bernard  
Scott, Mrs. Henry Bernard  
Schell, Mr. William H.  
Schell, Mrs. William H.  
Schell, Miss Helen

Shaldon, Comdr. L., Jr., M.C., USN  
Shaughnessy, Mrs. J. F.  
Sheldon, Miss Helen  
Schell, Mr. Chas.  
Schell, Mrs. Chas.  
Schell, Miss Henrietta  
Shepard, Mr. Oscar F.  
Shepard, Master, John Alden  
Shepard, Miss Lucile  
Schott, Mr. Adam  
Schott, Mr. Karl L.  
Schmorde, Miss Marie  
Stern, Mrs. William  
Stockder, Mr. H. M.  
Stockder, Mrs. H. M.  
Stoddard, Mr. Charles N.  
Stoddard, Mrs. Charles N.  
Stoddard, Mr. Charles N., Jr.  
Stoddard, Mr. Whitney S.

T

Taylor, Mr. H. J. W.  
Taylor, Mrs. H. J. W.  
Taylor, Mr. Carl  
Taylor, Mrs. Carl  
Terrill, Miss Mae  
Thomas, Mr. William R.  
Thomas, Mrs. William R.  
Thompson, Mr. Norberg  
Thompson, Mrs. Norberg

Thompson, Mr. Jack  
Thompson, Miss Marie  
\*Torreblanco, Sr. Fernando  
\*Torreblanco, Sra. Fernando  
Tragella, Mr. Umberto  
Tragella, Mrs. Umberto

V

Viehfager, Miss Martha

W

Waldron, Miss Betty  
Walker, Mr. A. W.  
Walker, Mrs. A. W.  
Walker, Master A. W., Jr.  
Weisstein, Mr. Morris  
Weinstein, Mr. Emanuel  
Weinstein, Mrs. Ida  
Well, Miss Elsa  
Williams, Mrs. E. A.  
Wilson, Mrs. O. W.  
Whitney, Mrs. Gertrude  
Whitman, Mr. Frederick C.  
Whitman, Miss Tania  
Whittaker, Mr. J. H.  
Woodroof, Miss Evelyn

Z

Zamm, Miss Martha Zamiarska

CABIN CLASS

A

Alexander, Dr. Ruth  
Anderson, Miss Edith

B

Baise, Mr. Harvey  
Bench, Mrs. W. G.  
Bock, Mr. J. F.  
Boehne, Dr. F.  
Boehne, Mrs. F.  
Bovy, Mrs. Henri  
Bovy, Mr. John  
Brady, Mrs. W. P.  
Braucht, Miss Katherine  
Bruce, Miss Kathryn  
Buchanan, Mr. Frank  
Buchanan, Mrs. Frank  
Burke, Miss Winifred M.

C

Cain, Mrs. Helen L.  
Chong, Mr. W. F.  
Chong, Mrs. W. F.  
Chong, Master Harvey  
Chong, Master Walbert  
Copeland, Mrs. Rita L.  
Corradini, Mr. A.  
Costamagna, Mr. C.  
Cowan, Mr. C. E.  
Cowan, Mrs. C. E.

D

Dahl, Master Bjarne B.  
Dahl, Mrs. Eva C.  
Dancy, Mr. Robert L.  
Dancy, Master Roy  
Denny, Miss Ethel  
Denning, Miss Jessie

Dickey, Mr. Lyle A.  
Dow, Mrs. Peter  
Drury, Mr. C. M.  
D'Valentina, Mr. B.

F

Faria, Mr. Harold  
Faria, Mr. Jobert  
Farnsworth, Miss Marthalice  
Farquhar, Mr. Chas.  
Ferguson, Mrs. Myrtle  
Ferguson, Master Ted  
Fidler, Miss Carolyn  
Finch, Miss Bertha  
Frederick, Mr. John  
Frieszell, Mrs. Frederick F.

G

Goldsmith, Mrs. S.  
Goldsmith, Master Douglas  
Grinager, Mr. Kenneth P.  
Grinager, Mrs. Esther

H

Ham, Mrs. Martha K.  
Hanaoka, Mr. Wilfred  
Harrison, Miss F.  
Hartley, Mrs. Robert E.  
Hartley, Master Robert E., Jr.  
Haynes, Mr. William  
Hornbuckle, Miss Louise  
Howard, Mr. Cecil C.  
Hurst, Mrs. Maxine  
Hurst, Miss Marjorie

I

Inouye, Kiyoshi, M. D.

K

Kern, Miss June  
Kesler, Mrs. A. L.  
King, Miss Billye Faye  
Knudson, Miss Louise  
Kong, Mr. B.  
Kong, Mrs. S. L.  
Kong, Miss Namlyn

L

Leal, Miss Candida  
Leder, Mr. Joseph S.  
Lindgren, Mr. Henry C.  
Lindgren, Mrs. Henry C.

Ludwig, Mr. Frederick  
Lum, Mr. K. W.

M

Martel, Mr. John L.  
Martin, Rev. Harry S.  
Martin, Mrs. Harry S.  
Martin, Miss Ruth F.  
Marques, Mrs. E. M. O.  
Mason, Miss Beverly  
McMahon, Mrs. Gertrude  
McSweeney, Miss Virginia  
Mills, Mr. Robert  
Miller, Mr. Robert  
Moore, Mrs. Jenna Vee  
Moore, Master Willson C.  
Moore, Miss Jenna Vee Eleanor  
Moore, Mr. Willson C.  
Moran, Miss Margaret  
Morrow, Mrs. Rose  
Morrow, Miss Rosemary  
Moss, Mrs. Katherine  
Murphy, Mr. Frank T.  
Murphy, Mrs. Helen G.  
Murphy, Master Jim Bill  
Murphy, Miss Sally Frances  
Murphy, Miss Claribel

N

Newby, Mr. Oscar M.  
Newby, Mrs. Katherine R.  
Nishiye, Mr. Ternaki

O

Oka, Mr. Mitsuji  
Overman, Mrs. Jessie M.

P

Pete, Mrs. George  
Pinder, Mrs. Ethel M.

R

Rawles, Miss Oma  
Rego, Mr. Herbert  
Riley, Mr. Merrill K.  
Riley, Mrs. Merrill K.  
Rule, Miss Margaret B.  
Russell, Dr. S. P.

S

Sablan, Mr. Joaquin  
Schattenburg, Mrs. O. Lee

Schattenburg, Miss Ellen Ruth  
 Schwen, Mr. Walter J., Sr.  
 Schwen, Mrs. Walter J.  
 Schwen, Miss Dorothy  
 Schwen, Mr. Walter John, Jr.  
 Schwen, Master Maurice  
 Shapira, Mr. Louis  
 Shapira, Mrs. Louis  
 Shaw, Mrs. Stanley H.  
 Sheldon, Mrs. Henry T.  
 Sherwood, Miss Ruth E.  
 Silva, Mr. Frank  
 Strohecker, Miss Nora  
 Strohsahl, Mr. Edward W.  
 Sugai, Mr. Don  
 Sugai, Mrs. Don

T

Taylor, Mrs. W. T.  
 Toguchi, Mr. Seihei  
 Torigoe, Dr. M.

Uyeno, Dr. R. K.

U

Varin, Mrs. Ruth  
 Voorhees, Mrs. Amy

V

Weber, Mrs. Minnie  
 Weber, Miss Marjorie  
 Whitnell, Mrs. L. D.  
 Wick, Mr. B. L.  
 Wiley, Mrs. D. R.  
 Wilkinson, Mrs. Helen  
 Winne, Mrs. Ruth  
 Wolff, Mrs. Paul E.

W

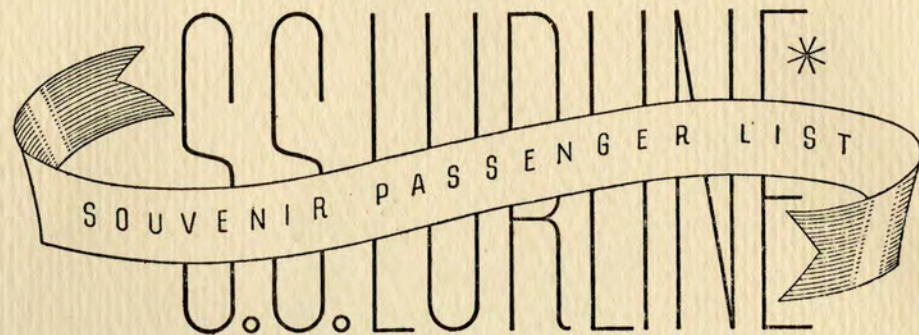
Y

Young, Miss Bernice

MATSON NAVIGATION COMPANY  
 GENERAL OFFICES  
 SAN FRANCISCO, CALIFORNIA



PASSENGER LIST



Voyage No. 56

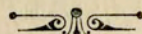
Sailing from Honolulu to Los Angeles Harbor and San Francisco  
September 14, 1935

Ship's Officers

Captain C. A. BERNDTSON, U.S.N.R., *Commander*  
G. R. MUNRO, U.S.N.R., *Chief Officer*  
H. T. ABBOTT, U.S.N.R., *Chief Engineer*

W. S. Sturgill, U.S.N.R., *Asst. Chief Engineer*  
A. Gerz, *Chief Steward*  
C. Martin, *Cabin Class Steward*  
J. Gelien, *Executive Chef*

D. C. Walker, *Purser*  
R. S. Myers, *Asst. Purser*  
E. Gibson, *Cabin Class Purser*  
Dr. George P. Lyman, *Surgeon*



FIRST CLASS

A

Ackerman, Miss Alice  
Ackerman, Miss Lucille  
Andrew, Miss Maryly K.  
Andrew, Mr. Archibald  
Andrew, Mrs. Archibald  
Andrew, Mr. Archie W.  
Andrew, Mr. A. Spencer  
Andrews, Miss Dorothy M.  
Atkinson, Mrs. Lynn  
Atkinson, Miss Doris  
Atkinson, Miss Jeanne  
Austin, Miss Anna

B

Bailey, Mr. Avey T.  
Bailey, Mrs. Avey T.  
Baker, Mr. H. B.  
Barnett, Mrs. Edna J.  
Beane, Mrs. Gladys L.  
Beane, Miss Patricia  
Beane, Master Reginald  
Beaty, Mrs. May  
Beaty, Master Robert  
Beaumont, Mrs. M. H.  
Beaumont, Miss Frances  
Belser, Mr. F. C.  
Belser, Mrs. F. C.

Bevins, Mrs. Maud  
Bevins, Mr. William Barle  
Bierley, Miss B. Marie  
Blomfield-Brown, Miss B.  
Blum, Mr. Leon A.  
Brock, Miss Jane  
Brodmerkel, Mrs. E. G.  
Brown, Mrs. George I.  
Brown, Mr. K. F.  
Brown, Mr. G. I., Jr.  
Brown, Mr. Z. W.  
Brown, Mrs. Minna C.  
Buhlert, Miss Elizabeth

C

Caldwell, Mr. Arthur G.  
Calles, Sr. Gen. Plutarco Elias  
Campbell, Mrs. Rodman Y.  
Campbell, Master Rodman Y., Jr.  
Canty, Mrs. Dolores C.  
Canty, Miss Edith  
Carson, Mr. K. S.  
Castle, Mr. James C.  
Castle, Mr. Donald  
Castle, Miss Alice  
Caudill, Mr. E. Davis  
Caudill, Mrs. E. Davis  
Chase, Miss June  
Christy, Mr. Charles Roland, Jr.

Christy, Mrs. Charles Roland, Jr.  
Christy, Miss Dorothy G.  
Christy, Miss Betty  
Clark, Mr. Chas. A.  
Clark, Mrs. Chas. A.  
Clement, Mr. Allan M.  
Clement, Mrs. Allan M.  
Coller, Mrs. Barbara S.  
Collins, Mr. T. D.  
Collins, Mrs. T. D.  
Collins, Miss Marion  
Comstock, Miss Eunice  
Cooke, Miss Mary  
Cooke, Miss Phoebe  
Cooke, Mr. R. A.  
Cooke, Mr. R. A., Jr.  
Cordell, Mrs. Ella C.  
Cunningham, Miss Marguerite

D

Damon, Miss Harriet  
Dean, Mrs. Howard S.  
De Martini, Miss Inez  
Dennison, Mrs. Mary Rosa  
Dillingham, Mr. Walter F.  
Dillingham, Mrs. Walter F.  
Dillingham, Miss Betty Lou  
Doesberg, Mrs. A. G.  
Donaldson, Mr. F. B., Jr.  
Dougherty, Mrs. M. J. Gratan  
Douglas, Miss Marion  
Dunham, Mrs. James  
Du Praw, Mrs. Ernest J.  
Du Praw, Master Ernest J., Jr.

E

Eckerdt, Dr. A. B.  
Eckerdt, Mrs. A. B.  
Ellis, Zenas H., M.D.  
Ellis, Mrs. Zenas H.  
Enemark, Mr. L. H.  
Enemark, Mrs. L. H.  
Enemark, Mr. Wm.

F

Fabik, Ensign Theodore J., USCG  
Fabik, Mrs. Theodore J.  
Fagan, Mr. Paul I.  
Fagan, Mrs. Paul I.  
Fagan, Miss Jane B.  
Fagan, Miss Helen  
Fahnestock, Mr. Noel S.  
Fahnestock, Mrs. Noel S.  
Faye, Mr. Alexander L.  
Feist, Miss Charlene  
Fiebig, Mrs. Minnie O.  
Finney, Miss Betty  
Foss, Mr. William  
Friedman, Miss Pauline

G

Giddings, Mr. Ralph O.  
Gessler, Mr. Clifford  
Gessler, Mrs. Clifford  
Gomes, Mr. John

Gortz, Mr. Hubert V.  
Greaney, Mr. E. J.  
Greenwell, Mr. Sherwood  
Griffith, Mr. Ben P.  
Griffith, Mrs. Ben P.  
Griffith, Mr. Stephen M.  
Griffith, Mrs. Stephen M.  
Groves, Mr. H. A.  
Guerin, Mr. J. V.  
Guerin, Mrs. J. V.

H

Halstead, Mr. F. G.  
Halsted, Miss Margaret E.  
Hargrave, Miss Helen  
Harper, Mrs. B. C.  
Harper, Master John C.  
Harper, Miss Ann  
Hastings, Miss Ella  
Hauser, Mrs. Lewis A.  
Henderson, Mr. Charles J.  
Henderson, Mr. Robert B.  
Henderson, Mrs. Robert B.  
Hills, Miss Phyllis  
Hills, Miss Barbara Gene  
Hills, Miss Merilyn  
Hobson, Capt. Bruce  
Holm, Miss Hanya  
Hoyt, Mr. Avery S.  
Hueter, Mrs. Mae  
Huggins, Mrs. Nadia T.  
Hunter, Mrs. Robert E.  
Hunter, Mr. Robert E., Jr.  
Hunter, Miss Helen  
Hunter, Miss Louise  
Hynes, Mrs. William Henry

I

Irving, Miss Ellis Leitch

J

Jacobs, Mrs. E.  
Jacobs, Miss C. M.  
Janss, Dr. Edwin  
Janss, Mrs. Edwin  
Janss, Mr. Edwin, Jr.  
Janss, Mr. William  
Johnson, Mrs. Howard L.  
Johnson, Master Howard L., Jr.  
Johnson, Mr. Raymond C.  
Johnson, Mrs. William Arthur  
Johnson, Miss Margaret La Rue  
Jones, Mrs. Margaret J.  
Judd, Dr. James R.  
Judd, Mrs. James R.  
Judd, Miss Alice  
Judd, Mr. J. Robert

K

Kane, Mrs. Estelle E.  
Kauffman, Mr. Harold M.  
Kauffman, Mrs. Harold M.  
Kauffman, Miss Janet  
Kiernan, Miss Margaret A.  
King, Miss Marjorie M.

Kneubuhl, Mr. James  
Knox, Mr. Roger I.  
Kyle, Mr. William  
Kyle, Mrs. William

L

Lale Demoz, Mme. Clotilde  
Lay, Mrs. Louisa  
Leavitt, Miss Constance B.  
Leitch, Mr. James N.  
Leitch, Mrs. James N.  
Levy, Mr. Al  
Levy, Mrs. Al  
Loudon, Mr. Leslie  
Luttmann, Mr. Juan  
Luttmann, Mrs. Juan

M

Macdonald, Mrs. Allan  
Macfarlane, Mr. Walter  
Magoon, Mrs. Helene  
Magoon, Mr. Marmion, Jr.  
Magoon, Mr. John A.  
Maier, Mrs. Isabel D.  
Mannix, Mrs. F. B.  
Maynard, Mrs. Thelma  
McCandless, Mrs. Guy D.  
McCandless, Miss Mildred  
McDonald, Mr. Robert  
McDonald, Mrs. Robert  
McHugh, Miss Helen  
McNamee, Mrs. Effie W.  
McNamee, Mr. Frank, Jr.  
Meadows, Mr. Al. H.  
Meadows, Mrs. Al. H.  
Mehrtens, Miss Edean  
Melim, Mr. T. Clifford  
Milnor, Mrs. N. F.  
Mist, Miss Frances M.  
Molter, Mrs. Kathrynna  
Molter, Master Jules  
Molter, Miss Marian  
Molvig, Captain George  
Montgomery, Capt. Harry G., Jr.  
USA  
Morgan, Mrs. James P.  
Morgan, Mr. Francis S.

N

Nash, Mrs. Edith G.

O

O'Brien, Master Ray J., Jr.  
O'Cranny, Miss Helen Gayle  
Odom, Mrs. A. L.  
Odom, Miss Diane  
O'Donnell, Mr. Arthur  
Oldeg, Mr. Leonard L.  
Orriek, Mr. Oliver S.

P

Paris, Mrs. E. H.  
Paris, Mr. Robert H.

Parish, Mr. S. W.  
Parish, Mrs. S. W.  
Parrish, Mr. Edwin  
Parrish, Mrs. Edwin  
Pearce, Miss Ethel  
Perryman, Mrs. Lucille  
Perryman, Master Freddie  
Podmore, Mr. H. E.  
Pontius, Mr. J. B.  
Pontius, Mrs. J. B.  
Pratt, Mr. J. S. B., Jr.  
Prince, Mr. Henry F.  
Pritzlaff, Mr. Richard G.  
Pryor, Mrs. Mary  
Pryor, Miss Angeline

R

Rasmussen, Capt. J. P.  
Rasmussen, Mrs. J. P.  
Rea, Miss Barbara P.  
Rhoades, Mrs. Genevieve C.  
Rhoades, Master Hal  
Rice, Miss Helen  
Rider, Mrs. Lucille  
Rittore, Miss Louise  
Robinson, Mrs. F. G.  
Robinson, Miss Jean  
Robinson, Miss Marion  
Roe, Mrs. J. R.  
Rogers, Mrs. Clyde A.  
Roll, Mrs. Eve  
Rombauer, Mr. Julius T.  
Rombauer, Mrs. Julius T.  
Ross, Miss Moira

S

Satrang, Mrs. Victoria  
Seaver, Mrs. Everett H.  
Schmid, Judge A. J. W.  
Schmid, Mrs. A. J. W.  
Schmid, Mr. Albert, Jr.  
Schmid, Mrs. Albert, Jr.  
Schnack, Mr. George  
Shingle, Mr. Gilmer  
Siegfried, Mr. Barton G., Jr.  
Siegfried, Mrs. Barton G., Jr.  
Snyder, Mr. Henry M.  
Speese, Mrs. Mabel L.  
Stoddard, Mr. Chas., Jr.  
Stoddard, Mrs. Chas., Jr.  
Strickler, Mr. David P.  
Sutton, Mr. Richard

T

Taylor, Mrs. James D.  
Thompson, Miss Barbara  
Thompson, Mrs. Harry L.  
Thorpe, Mr. Wm. B.  
Torreblanco, Sr. Fernando  
Torreblanco, Sra. Fernando  
Towler, Mrs. Charles H., Jr.  
Treahey, Miss Lillian E.  
Trimble, Mrs. James Francis

V

Vieweg, Mr. Frederic  
Vieweg, Mrs. Frederic  
Vitousek, Miss Frederica

W

Walsh, Mr. Stanley  
Waterhouse, Mrs. John  
Waterhouse, Miss Martha  
Waterhouse, Mr. Montague  
Waters, Mr. T. B.  
Waters, Mrs. T. B.  
Weil, Mr. Martin J.  
Weil, Mrs. Martin J.  
Weltz, Miss Jean  
Werkheiser, Mrs. Lily  
White, Miss Ellin  
White, Mr. Freeman  
Whitman, Mr. Frederick C.  
Whitman, Miss Tania

Whittier, Mr. Clarke B.  
Whittier, Mrs. Clarke B.  
Williams, Miss Irene  
Williams, Mr. Wm. J.  
Williams, Mrs. Wm. J.  
Winant, Miss Ellen M.  
Wolfe, Mr. J. I.  
Woods, Mrs. H. J.  
Woods, Master Harvey  
Woods, Master Gary  
Woods, Miss Patricia  
Woods, Master Terry  
Wurtzel, Mr. Harry  
Wurtzel, Mrs. Harry

Y

Yasunaga, Miss Umeyo  
Yeaman, Mr. Ralph  
Young, Mrs. Robert A.  
Young, Miss Ruth

CABIN CLASS

A

Ackerman, Mr. Walter D.  
Akers, Miss Frances  
Anderson, Mr. Albert F.  
Auld, Mrs. Olive

B

Bailey, Mr. Clifford H.  
Barcroft, Miss Hattie J.  
Basker, Mr. Max E., Jr.  
Black, Mrs. John H.  
Black, Master Allen E.  
Brandt, Mr. F. T.  
Bull, Mr. Percy D.  
Bull, Mrs. Percy D.

C

Cabanillas, Mrs. Mary  
Camwell, Miss Lillian  
Camwell, Miss May  
Cannell, Mr. Marvin  
Cannon, Miss Elizabeth  
Capri, Miss Lillian  
Cayton, Mr. Robert James  
Clapham, Midshipman L. B. Jr.,  
USN  
Clay, Mrs. Lillian  
Chong, Mr. Albert K. Y.  
Chrones, Mr. Demosthenes  
Coates, Mr. C. W.  
Coates, Mrs. C. W.  
Cockett, Mr. Patrick M., Jr.  
Concepcion, Mr. Pedro  
Coyne, Miss Lillian  
Crawford, Mrs. Grace K.

D

Damas, Mr. Joseph I.  
Darrow, Miss Virginia  
Dean, Mr. Pierson  
Deiro, Miss Adelle  
De Luiz, Mrs. Roseline  
De Luiz, Miss Georginia  
Derbenwick, Mr. Frank  
Dewey, Mrs. Jeanne M.  
Dickson, Mrs. Mary C.  
Dollmire, Mr. John  
Dollmire, Mrs. John  
Dropman, Mr. E.  
Dropman, Mrs. E.  
Dropman, Mr. Warren

E

Ethridge, Miss Jean  
Eveleth, Mr. Barton M.

F

Fawley, Mrs. Norman D.  
Fernandez, Mr. Leabert  
Fessler, Mrs. Hazel  
Forkner, Miss Mary  
Fort, Mr. Allen  
Franco, Mr. Frank  
Fujii, Mr. William

G

Gardner, Miss Ada  
Gilman, Mr. G. W.  
Gilman, Mrs. G. W.

Gonsalves, Mr. John F.  
Groff, Mr. A. L.  
Grunsky, Mr. Otto  
Guzman, Mrs. Josephine

**H**

Heath, Mrs. Florence  
Hebert, Mr. Fred F.  
Hew, Mr. Alfred Y. K.  
Higami, Mr. Tsutao  
Hill, Miss Sally  
Hobson, Mr. A. A.  
Hogan, Mr. Andrew V.  
Hogan, Mrs. Andrew V.  
Hurd, Mr. James  
Hutchinson, Mrs. Florence W.  
Hutchinson, Miss Helen  
Hymes, Mrs. Henry

**J**

Jenkins, Mr. Carl A.  
Johnson, Mr. Arnold P.  
Jones, Mr. Frank S.  
Jones, Mrs. Frank S.  
Jones, Mr. Hubert M.  
Jordan, Miss Phyllis E.

**K**

Kam, Miss Alice  
Kamei, Mr. Edward Shiro  
Keller, Miss Nadine  
Killion, Mrs. F. P.  
Kleinsorge, Mr. Paul L.  
Knutson, Mr. R.  
Kong, Mr. Benjamin F.  
Kroll, Miss Leilani  
Kuhlmann, Mr. F. W.

**L**

Lam, Mr. Philip  
Lenardson, Mrs. Leila  
Lenardson, Mr. F. E.  
Lelean, Miss Marian  
Lesh, Mrs. Lula  
Lindsay, Mr. Richard F.  
Lo, Miss Dorothy  
Loo, Miss Beatrice  
Ludders, Mr. Wm. C.  
Lum, Miss May

**M**

Machado, Mrs. Mary C.  
Machado, Mr. Theodore E.  
Mahaffy, Mrs. James R.  
Manning, Mr. John W.  
Martin, Mr. Harold  
Mau, Mr. Harry  
Mead, Mrs. Mary Saylor  
Mead, Master Warren Kimball  
Mead, Master Robert Burbank  
Medeiros, Miss Alice  
Miller, Mrs. Maurice  
Mirikitani, Mr. Mamoru

Morimoto, Mr. Rodney H.  
Morris, Mrs. Faye  
Murphy, Mr. Orestes  
Murray, Mrs. Thelma  
Murray, Miss Helen

**N**

Nakano, Miss Hisako  
Nearing, Miss Rose  
Neiley, Mr. Frank L.  
Neiley, Mrs. Frank L.  
Newman, Mr. Jack  
Nobrega, Mrs. Mary F.

**O**

O'Hare, Master Robert

**P**

Pahk, Miss Agnes  
Palmer, Mr. F. C.  
Palmer, Mrs. F. C.  
Parker, Miss Catherine  
Penn, Miss Alice

**R**

Raney, Mrs. P. A.  
Raney, Master Clyde  
Raney, Miss Mary Alice  
Richardson, Mr. Wayne  
Robinson, Mrs. Betty  
Robinson, Miss Mary Louise  
Robinson, Master James Kendrick  
Rosecrans, Mr. C. D.  
Row, Mr. R. Boswell  
Rowland, Miss Doris

**S**

Sasaki, Mr. Tsutomu  
Schweickert, Mrs. Mary A.  
Sexton, Mr. Harold  
Shikuma, Mr. Shunichi  
Shultz, Mr. J. H.  
Skaggs, Mrs. Dorothy  
Smuekler, Miss Saraell  
Sparling, Mrs. Vera  
Stevenson, Mrs. Emily J.

**T**

Taylor, Mr. R. J.  
Thomson, Miss Geraldine  
Tomita, Mr. M.  
Tuller, Miss Thelma  
Tupko, Mrs. Hazel

**V**

Voorhees, Mrs. Amy

**W**

Wagner, Mr. Arnold  
Warden, Mr. Eujean  
Watanabe, Mr. K.  
Watt, Miss Alison  
Wells, Mr. T. A.  
Wong, Mr. Joseph

Wong, Mr. Walter C.  
Worthington, Mr. J. L.

**Y**

Yamaguchi, Mr. Ralph T.  
Yates, Miss Vesta  
Yee, Miss Lurena



MATSON NAVIGATION COMPANY  
GENERAL OFFICES  
SAN FRANCISCO, CALIFORNIA

*First Class:*

*Cabin Class:*

CORRECTIONS

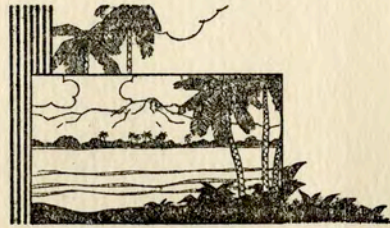
Hymes, Mrs. Henry



PASSENGER LIST



Souvenir  
PASSENGER  
LIST



S. S. MALOLO

VOYAGE 143

Sailing from Los Angeles Harbor, Saturday, August 3, 1935,  
FOR HONOLULU, T. H.

OFFICERS

CAPTAIN A. G. TOWNSEND, Commander  
W. J. NORBERG, U.S.N.R., Chief Officer  
GEO. GRONVOLD, U.S.N.R., Chief Engineer

R. C. POYNOR, U.S.N.R., Asst. Chief Engr.    R. M. WINN, Purser  
C. CHRISTIAN, Chief Steward                J. E. HIGGINS, Asst. Purser  
C. MARTIN, Cabin Class Steward           M. C. HAYES, Cabin Class Purser  
H. SCHURZ, Executive Chef                 DR. J. B. WILEY, Surgeon

FIRST CLASS

A

Andrade, Mr. William G.  
Arnold, Dr. Harry L.  
Avis, Miss Josephine

B

Babcock, Mrs. Henry K.  
Bates, Mr. Merrill F.  
Bates, Mrs. Muriel B.  
Bates, Master William M.  
Baker, Mr. George Barr  
Beckley, Mr. Geo. C.  
Benson, Mr. H. P.  
Benson, Mrs. H. P.  
Berrey, Miss Julia M.  
Bolster, Mrs. Gertrude B.  
Borough, Miss Helen M.  
Boyle, Mrs. E. A. Langton  
Brennan, Mr. William C.  
Bryant, Miss Frances E.

C

Cain, Mrs. Grace S.  
Cain, Miss Muriel  
Callahan, Mrs. Lawrence  
Callahan, Mr. Lawrence  
Calles, Sr. Gen. Plutarco Elias

Colgrove, Mr. Alfred S.  
Cheatham, Mrs. Elmer M.  
Cheatham, Mr. Elmer M.  
Chamberlain, Miss Mary  
Crew, Miss Roberta Southerland

D

Darcy, Miss Ellen  
de Paz, Mr. Joseph  
de Paz, Mrs. Medina  
Driver, Mr. Leland H.

E

Edwards, Miss Pauline K.  
Elston, Mr. Henry

F

Farley, Mr. James A.  
Farley, Mrs. James A.  
Farry, Mrs. Louise Mattei  
Farry, Miss Carol  
Fisher, Miss Bessie  
Fite, Mrs. H. B.  
Found, Miss Ruth M.  
Ford, Mrs. Mary  
Ford, Miss Barbara

H

Hagenow, Miss Leona  
Haddon, Mrs. Sarah T.  
Hasser, Miss Bernadine M.  
Henderson, Mrs. Robert B.  
Henderson, Mr. Joseph R.  
Henderson, Mrs. Joseph R.  
Henderson, Miss Josephine R.  
Hiers, Mrs. H. R.  
Hill, Dr. S. M.  
Hill, Mrs. S. M.  
Hill, Miss Mary Jane  
Hilts, Miss Harriet  
Holm, Miss Hanya  
Howard, Mrs. Van H.  
Hodgson, Mr. Ralph E.  
Hughes, Miss Maude  
Hurlbut, Mr. Robert S.  
Hurlbut, Mrs. Robert S.

J

Jacobs, Miss Esther  
Johnson, Mr. Harry W.  
Johnson, Mrs. Harry W.  
Johnson, Miss MaBelle E.

K

Kaufman, Mr. William  
Kaufman, Mrs. Joel  
Kaufman, Miss Joelle  
Kellerman, Mr. Phil L.  
Kennedy, Mrs. Stanley C.  
Kennedy, Miss Patricia  
Klein, Mrs. Eleanor  
Krupp, Dr. Henry C.  
Kuser, Mr. Dryden

L

Leipziger, Miss Pauline  
Leishman, Rev. James  
Lemann, Dr. I. I.  
Lemann, Mrs. I. I.  
Lemann, Mr. Paul B.  
Lemann, Mrs. Paul B.  
Lewis, Mr. Jos. G.  
Lewis, Mrs. Jos. G.  
Lewis, Miss Ruth  
Lindsay, Miss Edith M.  
Lofsky, Mr. J.  
Lofsky, Mrs. J.  
Lofsky, Miss Sunya  
Long, Mrs. Louis  
Long, Miss Johannah  
Love, Mr. William A.  
Love, Mrs. William A.

M

MacKechnie, Mrs. Andrew  
MacKechnie, Miss Louise  
Mather, Mrs. E. D.  
May, Mr. Phil  
May, Mrs. Phil  
McGuinnes, Dr. Geo. A.  
McGuinnes, Mrs. Geo. A.  
McGarvey, Mr. Harmon Paul  
McIlree, Mr. Paul L.  
McIlree, Mrs. Paul L.  
McIlree, Miss Ann  
McNamara, Mr. Fred  
McNamara, Mrs. Fred  
Merrick, Miss Alice P.  
Michopulos, Mrs. Peggy  
Mitchell, Mr. Eddie  
Moore, Mr. S. W.  
Moncado, Dr. H. C.  
Murphree, Miss Arline  
Murphy, Miss Laura

O

O'Connor, Mr. Ambrose  
Olive, Mr. George S.  
Olive, Mrs. George S.  
Olive, Mr. George S., Jr.

P

Palmer, Mrs. Aino M.  
Palmer, Miss Regina D.  
Parsons, Mr. J. H.  
Parsons, Mrs. J. H.  
Poindexter, Governor Joseph B.

R

Radke, Miss Frieda  
Randolph, Mrs. P. F.  
Randolph, Miss Arah Joan  
Richardson, Mr. Bonner  
Richardson, Mrs. Bonner  
Richardson, Miss Miriam  
Richardson, Mr. David B., Jr.  
Robertson, Mrs. J. R.  
Robertson, Miss Sally  
Rosenwald, Mrs. B.  
Rosenblatt, Mr. Solomon  
Roughton, Miss Edith

S

Sands, Miss Dorothy  
Scarff, Mr. Paul B.  
Scarff, Mrs. Paul B.  
Scott, Mr. Henry Bernard  
Scott, Mrs. Henry Bernard  
Schell, Mr. William H.  
Schell, Mrs. William H.  
Schell, Miss Helen

Shaldon, Comdr. L., Jr., M.C., USN  
 Shaughnessy, Mrs. J. F.  
 Sheldon, Miss Helen  
 Schell, Mr. Chas.  
 Schell, Mrs. Chas.  
 Schell, Miss Henrietta  
 Shepard, Mr. Oscar F.  
 Shepard, Master, John Alden  
 Shepard, Miss Lucile  
 Schott, Mr. Adam  
 Schott, Mr. Karl L.  
 Schmorde, Miss Marie  
 Stern, Mrs. William  
 Stockder, Mr. H. M.  
 Stockder, Mrs. H. M.  
 Stoddard, Mr. Charles N.  
 Stoddard, Mrs. Charles N.  
 Stoddard, Mr. Charles N., Jr.  
 Stoddard, Mr. Whitney S.

T

Taylor, Mr. H. J. W.  
 Taylor, Mrs. H. J. W.  
 Taylor, Mr. Carl  
 Taylor, Mrs. Carl  
 Terrill, Miss Mae  
 Thomas, Mr. Wiliam R.  
 Thomas, Mrs. William R.  
 Thompson, Mr. Norberg  
 Thompson, Mrs. Norberg

Thompson, Mr. Jack  
 Thompson, Miss Marie  
 Torreblanco, Sr. Fernando  
 Torreblanco, Sra. Fernando  
 Tragella, Mr. Umberto  
 Tragella, Mrs. Umberto

V

Viehager, Miss Martha

W

Waldron, Miss Betty  
 Walker, Mr. A. W.  
 Walker, Mrs. A. W.  
 Walker, Master A. W., Jr.  
 Weisstein, Mr. Morris  
 Weinstein, Mr. Emanuel  
 Weinstein, Mrs. Ida  
 Well, Miss Elsa  
 Williams, Mrs. E. A.  
 Wilson, Mrs. O. W.  
 Whitney, Mrs. Gertrude  
 Whitman, Mr. Frederick C.  
 Whitman, Miss Tania  
 Whittaker, Mr. J. H.  
 Woodroof, Miss Evelyn

Z

Zamm, Miss Martha Zamiarska

CABIN CLASS

A

Alexander, Dr. Ruth  
 Anderson, Miss Edith

B

Baise, Mr. Harvey  
 Bench, Mrs. W. G.  
 Bock, Mr. J. F.  
 Boehne, Dr. F.  
 Boehne, Mrs. F.  
 Bovy, Mrs. Henri  
 Bovy, Mr. John  
 Brady, Mrs. W. P.  
 Braucht, Miss Katherine  
 Bruce, Miss Kathryne  
 Buchanan, Mr. Frank  
 Buchanan, Mrs. Frank  
 Burke, Miss Winifred M.

C

Cain, Mrs. Helen L.  
 Chong, Mr. W. F.  
 Chong, Mrs. W. F.  
 Chong, Master Harvey  
 Chong, Master Walbert  
 Copeland, Mrs. Rita L.  
 Corradini, Mr. A.  
 Costamagna, Mr. C.  
 Cowan, Mr. C. E.  
 Cowan, Mrs. C. E.

D

Dahl, Master Bjarne B.  
 Dahl, Mrs. Eva C.  
 Dancy, Mr. Robert L.  
 Dancy, Master Roy  
 Denny, Miss Ethel  
 Denning, Miss Jessie

Dickey, Mr. Lyle A.  
 Dow, Mrs. Peter  
 Drury, Mr. C. M.  
 D'Valentina, Mr. B.

F

Faria, Mr. Harold  
 Faria, Mr. Jober  
 Farnsworth, Miss Marthalice  
 Farquhar, Mr. Chas.  
 Ferguson, Mrs. Myrtle  
 Ferguson, Master Ted  
 Fidler, Miss Carolyn  
 Finch, Miss Bertha  
 Frederick, Mr. John  
 Frieszell, Mrs. Frederick F.

G

Goldsmith, Mrs. S.  
 Goldsmith, Master Douglas  
 Grinager, Mr. Kenneth P.  
 Grinager, Mrs. Esther

H

Ham, Mrs. Martha K.  
 Hanaoka, Mr. Wilfred  
 Harrison, Miss F.  
 Hartley, Mrs. Robert E.  
 Hartley, Master Robert E., Jr.  
 Haynes, Mr. William  
 Hornbuckle, Miss Louise  
 Howard, Mr. Cecil C.  
 Hurst, Mrs. Maxine  
 Hurst, Miss Marjorie

I

Inouye, Kiyoshi, M. D.

K

Kern, Miss June  
 Kesler, Mrs. A. L.  
 King, Miss Billye Faye  
 Knudson, Miss Louise  
 Kong, Mr. B.  
 Kong, Mrs. S. L.  
 Kong, Miss Namlyn

L

Leal, Miss Candida  
 Leder, Mr. Joseph S.  
 Lindgren, Mr. Henry C.  
 Lindgren, Mrs. Henry C.

Ludwig, Mr. Frederick  
 Lum, Mr. K. W.

M

Martel, Mr. John L.  
 Martin, Rev. Harry S.  
 Martin, Mrs. Harry S.  
 Martin, Miss Ruth F.  
 Marques, Mrs. E. M. O.  
 Mason, Miss Beverly  
 McMahon, Mrs. Gertrude  
 McSweeney, Miss Virginia  
 Mills, Mr. Robert  
 Miller, Mr. Robert  
 Moore, Mrs. Jenna Vee  
 Moore, Master Willson C.  
 Moore, Miss Jenna Vee Eleanor  
 Moore, Mr. Willson C.  
 Moran, Miss Margaret  
 Morrow, Mrs. Rose  
 Morrow, Miss Rosemary  
 Moss, Mrs. Katherine  
 Murphy, Mr. Frank T.  
 Murphy, Mrs. Helen G.  
 Murphy, Master Jim Bill  
 Murphy, Miss Sally Frances  
 Murphy, Miss Claribel

N

Newby, Mr. Oscar M.  
 Newby, Mrs. Katherine R.  
 Nishiye, Mr. Ternaki

O

Oka, Mr. Mitsuji  
 Overman, Mrs. Jessie M.

P

Pete, Mrs. George  
 Pinder, Mrs. Ethel M.

R

Rawles, Miss Oma  
 Rego, Mr. Herbert  
 Riley, Mr. Merrill K.  
 Riley, Mrs. Merrill K.  
 Rule, Miss Margaret B.  
 Russell, Dr. S. P.

S

Sablan, Mr. Joaquin  
 Schattenburg, Mrs. O. Lee

Schnattenburg, Miss Ellen Ruth  
Schwen, Mr. Walter J., Sr.  
Schwen, Mrs. Walter J.  
Schwen, Miss Dorothy  
Schwen, Mr. Walter John, Jr.  
Schwin, Master Maurice  
Shapira, Mr. Louis  
Shapira, Mrs. Louis  
Shaw, Mrs. Stanley H.  
Sheldon, Mrs. Henry T.  
Sherwood, Miss Ruth E.  
Silva, Mr. Frank  
Strohecker, Miss Nora  
Strohsahl, Mr. Edward W.  
Sugai, Mr. Don  
Sugai, Mrs. Don

T

Taylor, Mrs. W. T.  
Toguchi, Mr. Seihei  
Torigoe, Dr. M.

U

Uyeno, Dr. R. K.

V

Varin, Mrs. Ruth  
Voorhees, Mrs. Amy

W

Weber, Mrs. Minnie  
Weber, Miss Marjorie  
Whitnell, Mrs. L. D.  
Wick, Mr. B. L.  
Wiley, Mrs. D. R.  
Wilkinson, Mrs. Helen  
Winne, Mrs. Ruth  
Wolff, Mrs. Paul E.

Y

Young, Miss Bernice

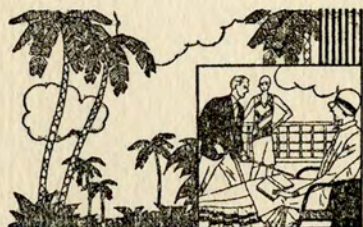
MATSON NAVIGATION COMPANY

GENERAL OFFICES

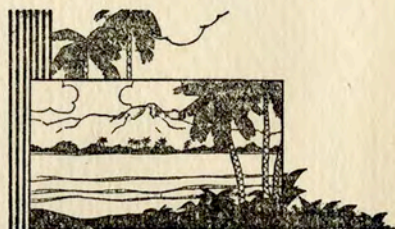
SAN FRANCISCO, CALIFORNIA



PASSENGER LIST



Souvenir  
PASSENGER  
LIST



## S. S. MALOLO

VOYAGE 143

Sailing from Los Angeles Harbor, Saturday, August 3, 1935,  
FOR HONOLULU, T. H.

### OFFICERS

CAPTAIN A. G. TOWNSEND, Commander  
W. J. NORBERG, U.S.N.R., Chief Officer  
GEO. GRONVOLD, U.S.N.R., Chief Engineer

R. C. POYNOR, U.S.N.R., Asst. Chief Engr. R. M. WINN, Purser  
C. CHRISTIAN, Chief Steward J. E. HIGGINS, Asst. Purser  
C. MARTIN, Cabin Class Steward M. C. HAYES, Cabin Class Purser  
H. SCHURZ, Executive Chef DR. J. B. WILEY, Surgeon

### FIRST CLASS

#### A

Andrade, Mr. William G.  
Arnold, Dr. Harry L.  
Avis, Miss Josephine

#### B

Babcock, Mrs. Henry K.  
Bates, Mr. Merrill F.  
Bates, Mrs. Muriel B.  
Bates, Master William M.  
Baker, Mr. George Barr  
Beckley, Mr. Geo. C.  
Benson, Mr. H. P.  
Benson, Mrs. H. P.  
Berrey, Miss Julia M.  
Bolster, Mrs. Gertrude B.  
Borough, Miss Helen M.  
Boyle, Mrs. E. A. Langton  
Brennan, Mr. William C.  
Bryant, Miss Frances E.

#### C

Cain, Mrs. Grace S.  
Cain, Miss Muriel  
Callahan, Mrs. Lawrence  
Callahan, Mr. Lawrence  
Calles, Sr. Gen. Plutarco Elias

Colgrove, Mr. Alfred S.  
Cheatham, Mrs. Elmer M.  
Cheatham, Mr. Elmer M.  
Chamberlain, Miss Mary  
Crew, Miss Roberta Southerland

#### D

Darcy, Miss Ellen  
de Paz, Mr. Joseph  
de Paz, Mrs. Medina  
Driver, Mr. Leland H.

#### E

Edwards, Miss Pauline K.  
Elston, Mr. Henry

#### F

Farley, Mr. James A.  
Farley, Mrs. James A.  
Farry, Mrs. Louise Mattei  
Farry, Miss Carol  
Fisher, Miss Bessie  
Fite, Mrs. H. B.  
Found, Miss Ruth M.  
Ford, Mrs. Mary  
Ford, Miss Barbara

#### H

Hagenow, Miss Leona  
Haddon, Mrs. Sarah T.  
Hasser, Miss Bernadine M.  
Henderson, Mrs. Robert B.  
Henderson, Mr. Joseph R.  
Henderson, Mrs. Joseph R.  
Henderson, Miss Josephine R.  
Hiers, Mrs. H. R.  
Hill, Dr. S. M.  
Hill, Mrs. S. M.  
Hill, Miss Mary Jane  
Hilts, Miss Harriet  
Holm, Miss Hanya  
Howard, Mrs. Van H.  
Hodgson, Mr. Ralph E.  
Hughes, Miss Maude  
Hurlbut, Mr. Robert S.  
Hurlbut, Mrs. Robert S.

#### J

Jacobs, Miss Esther  
Johnson, Mr. Harry W.  
Johnson, Mrs. Harry W.  
Johnson, Miss MaBelle E.

#### K

Kaufman, Mr. William  
Kaufman, Mrs. Joel  
Kaufman, Miss Joelle  
Kellerman, Mr. Phil L.  
Kennedy, Mrs. Stanley C.  
Kennedy, Miss Patricia  
Klein, Mrs. Eleanor  
Krupp, Dr. Henry C.  
Kuser, Mr. Dryden

#### L

Leipziger, Miss Pauline  
Leishman, Rev. James  
Lemann, Dr. I. I.  
Lemann, Mrs. I. I.  
Lemann, Mr. Paul B.  
Lemann, Mrs. Paul B.  
Lewis, Mr. Jos. G.  
Lewis, Mrs. Jos. G.  
Lewis, Miss Ruth  
Lindsay, Miss Edith M.  
Lofsky, Mr. J.  
Lofsky, Mrs. J.  
Lofsky, Miss Sunya  
Long, Mrs. Louis  
Long, Miss Johannah  
Love, Mr. William A.  
Love, Mrs. William A.

#### M

MacKechnie, Mrs. Andrew  
MacKechnie, Miss Louise  
Mather, Mrs. E. D.  
May, Mr. Phil  
May, Mrs. Phil  
McGuinnes, Dr. Geo. A.  
McGuinnes, Mrs. Geo. A.  
McGarvey, Mr. Harmon Paul  
McIlree, Mr. Paul L.  
McIlree, Mrs. Paul L.  
McIlree, Miss Ann  
McNamara, Mr. Fred  
McNamara, Mrs. Fred  
Merrick, Miss Alice P.  
Michopulos, Mrs. Peggy  
Mitchell, Mr. Eddie  
Moore, Mr. S. W.  
Moncado, Dr. H. C.  
Murphree, Miss Arline  
Murphy, Miss Laura

#### O

O'Connor, Mr. Ambrose  
Olive, Mr. George S.  
Olive, Mrs. George S.  
Olive, Mr. George S., Jr.

#### P

Palmer, Mrs. Aino M.  
Palmer, Miss Regina D.  
Parsons, Mr. J. H.  
Parsons, Mrs. J. H.  
Poindexter, Governor Joseph B.

#### R

Radke, Miss Frieda  
Randolph, Mrs. P. F.  
Randolph, Miss Arah Joan  
Richardson, Mr. Bonner  
Richardson, Mrs. Bonner  
Richardson, Miss Miriam  
Richardson, Mr. David B., Jr.  
Robertson, Mrs. J. R.  
Robertson, Miss Sally  
Rosenwald, Mrs. B.  
Rosenblatt, Mr. Solomon  
Roughton, Miss Edith

#### S

Sands, Miss Dorothy  
Scarff, Mr. Paul B.  
Scarff, Mrs. Paul B.  
Scott, Mr. Henry Bernard  
Scott, Mrs. Henry Bernard  
Schell, Mr. William H.  
Schell, Mrs. William H.  
Schell, Miss Helen

Shaldon, Comdr. L., Jr., M.C., USN  
 Shaughnessy, Mrs. J. F.  
 Sheldon, Miss Helen  
 Schell, Mr. Chas.  
 Schell, Mrs. Chas.  
 Schell, Miss Henrietta  
 Shepard, Mr. Oscar F.  
 Shepard, Master, John Alden  
 Shepard, Miss Lucile  
 Schott, Mr. Adam  
 Schott, Mr. Karl L.  
 Schmorde, Miss Marie  
 Stern, Mrs. William  
 Stockder, Mr. H. M.  
 Stockder, Mrs. H. M.  
 Stoddard, Mr. Charles N.  
 Stoddard, Mrs. Charles N.  
 Stoddard, Mr. Charles N., Jr.  
 Stoddard, Mr. Whitney S.

T

Taylor, Mr. H. J. W.  
 Taylor, Mrs. H. J. W.  
 Taylor, Mr. Carl  
 Taylor, Mrs. Carl  
 Terrill, Miss Mae  
 Thomas, Mr. William R.  
 Thomas, Mrs. William R.  
 Thompson, Mr. Norberg  
 Thompson, Mrs. Norberg

Thompson, Mr. Jack  
 Thompson, Miss Marie  
 Torreblanco, Sr. Fernando  
 Torreblanco, Sra. Fernando  
 Tragella, Mr. Umberto  
 Tragella, Mrs. Umberto

V

Viehfaber, Miss Martha

W

Waldron, Miss Betty  
 Walker, Mr. A. W.  
 Walker, Mrs. A. W.  
 Walker, Master A. W., Jr.  
 Weisstein, Mr. Morris  
 Weinstein, Mr. Emanuel  
 Weinstein, Mrs. Ida  
 Well, Miss Elsa  
 Williams, Mrs. E. A.  
 Wilson, Mrs. O. W.  
 Whitney, Mrs. Gertrude  
 Whitman, Mr. Frederick C.  
 Whitman, Miss Tania  
 Whittaker, Mr. J. H.  
 Woodroof, Miss Evelyn

Z

Zamm, Miss Martha Zamiarska

CABIN CLASS

A

Alexander, Dr. Ruth  
 Anderson, Miss Edith

B

Baise, Mr. Harvey  
 Bench, Mrs. W. G.  
 Bock, Mr. J. F.  
 Boehne, Dr. F.  
 Boehne, Mrs. F.  
 Bovy, Mrs. Henri  
 Bovy, Mr. John  
 Brady, Mrs. W. P.  
 Braucht, Miss Katherine  
 Bruce, Miss Kathryne  
 Buchanan, Mr. Frank  
 Buchanan, Mrs. Frank  
 Burke, Miss Winifred M.

C

Cain, Mrs. Helen L.  
 Chong, Mr. W. F.  
 Chong, Mrs. W. F.  
 Chong, Master Harvey  
 Chong, Master Walbert  
 Copeland, Mrs. Rita L.  
 Corradini, Mr. A.  
 Costamagna, Mr. C.  
 Cowan, Mr. C. E.  
 Cowan, Mrs. C. E.

D

Dahl, Master Bjarne B.  
 Dahl, Mrs. Eva C.  
 Dancy, Mr. Robert L.  
 Dancy, Master Roy  
 Denny, Miss Ethel  
 Denning, Miss Jessie

Dickey, Mr. Lyle A.  
 Dow, Mrs. Peter  
 Drury, Mr. C. M.  
 D'Valentina, Mr. B.

F

Faria, Mr. Harold  
 Faria, Mr. Jober  
 Farnsworth, Miss Marthalice  
 Farquhar, Mr. Chas.  
 Ferguson, Mrs. Myrtle  
 Ferguson, Master Ted  
 Fidler, Miss Carolyn  
 Finch, Miss Bertha  
 Frederick, Mr. John  
 Frieszell, Mrs. Frederick F.

G

Goldsmith, Mrs. S.  
 Goldsmith, Master Douglas  
 Grinager, Mr. Kenneth P.  
 Grinager, Mrs. Esther

H

Ham, Mrs. Martha K.  
 Hanaoka, Mr. Wilfred  
 Harrison, Miss F.  
 Hartley, Mrs. Robert E.  
 Hartley, Master Robert E., Jr.  
 Haynes, Mr. William  
 Hornbuckle, Miss Louise  
 Howard, Mr. Cecil C.  
 Hurst, Mrs. Maxine  
 Hurst, Miss Marjorie

I

Inouye, Kiyoshi, M. D.

K

Kern, Miss June  
 Kesler, Mrs. A. L.  
 King, Miss Billye Faye  
 Knudson, Miss Louise  
 Kong, Mr. B.  
 Kong, Mrs. S. L.  
 Kong, Miss Namlyn

L

Leal, Miss Candida  
 Leder, Mr. Joseph S.  
 Lindgren, Mr. Henry C.  
 Lindgren, Mrs. Henry C.

Ludwig, Mr. Frederick  
 Lum, Mr. K. W.

M

Martel, Mr. John L.  
 Martin, Rev. Harry S.  
 Martin, Mrs. Harry S.  
 Martin, Miss Ruth F.  
 Marques, Mrs. E. M. O.  
 Mason, Miss Beverly  
 McMahan, Mrs. Gertrude  
 McSweeney, Miss Virginia  
 Mills, Mr. Robert  
 Miller, Mr. Robert  
 Moore, Mrs. Jenna Vee  
 Moore, Master Willson C.  
 Moore, Miss Jenna Vee Eleanor  
 Moore, Mr. Willson C.  
 Moran, Miss Margaret  
 Morrow, Mrs. Rose  
 Morrow, Miss Rosemary  
 Moss, Mrs. Katherine  
 Murphy, Mr. Frank T.  
 Murphy, Mrs. Helen G.  
 Murphy, Master Jim Bill  
 Murphy, Miss Sally Frances  
 Murphy, Miss Claribel

N

Newby, Mr. Oscar M.  
 Newby, Mrs. Katherine R.  
 Nishiye, Mr. Ternaki

O

Oka, Mr. Mitsuji  
 Overman, Mrs. Jessie M.

P

Pete, Mrs. George  
 Pinder, Mrs. Ethel M.

R

Rawles, Miss Oma  
 Rego, Mr. Herbert  
 Riley, Mr. Merrill K.  
 Riley, Mrs. Merrill K.  
 Rule, Miss Margaret B.  
 Russell, Dr. S. P.

S

Sablan, Mr. Joaquin  
 Schattenburg, Mrs. O. Lee

Schattenburg, Miss Ellen Ruth  
Schwen, Mr. Walter J., Sr.  
Schwen, Mrs. Walter J.  
Schwen, Miss Dorothy  
Schwen, Mr. Walter John, Jr.  
Schwen, Master Maurice  
Shapira, Mr. Louis  
Shapira, Mrs. Louis  
Shaw, Mrs. Stanley H.  
Sheldon, Mrs. Henry T.  
Sherwood, Miss Ruth E.  
Silva, Mr. Frank  
Strohecker, Miss Nora  
Strohsahl, Mr. Edward W.  
Sugai, Mr. Don  
Sugai, Mrs. Don

T

Taylor, Mrs. W. T.  
Toguchi, Mr. Seihei  
Torigoe, Dr. M.

U

Uyeno, Dr. R. K.

V

Varin, Mrs. Ruth  
Voorhees, Mrs. Amy

W

Weber, Mrs. Minnie  
Weber, Miss Marjorie  
Whitnell, Mrs. L. D.  
Wick, Mr. B. L.  
Wiley, Mrs. D. R.  
Wilkinson, Mrs. Helen  
Winne, Mrs. Ruth  
Wolff, Mrs. Paul E.

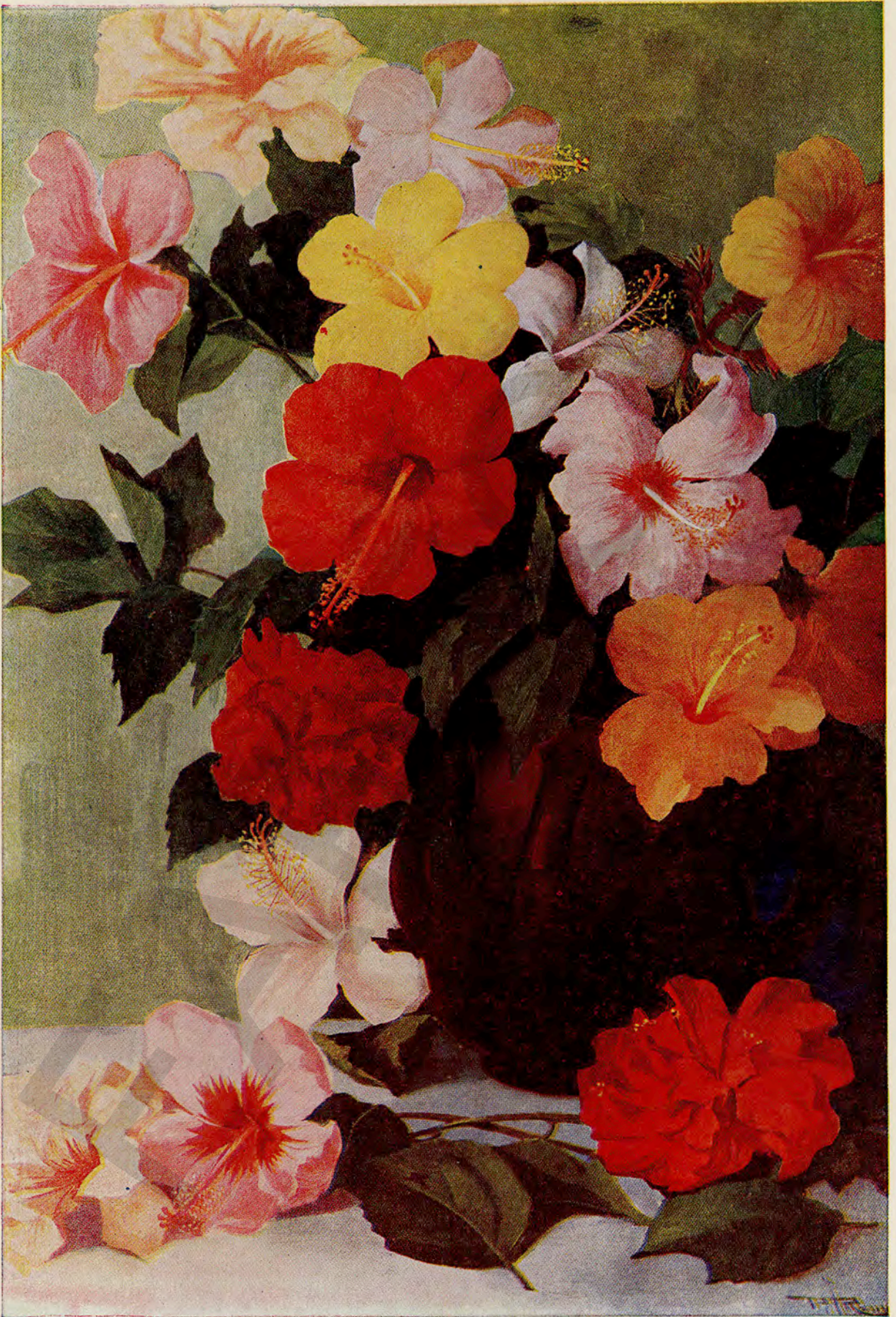
Y

Young, Miss Bernice

MATSON NAVIGATION COMPANY

GENERAL OFFICES

SAN FRANCISCO, CALIFORNIA



HIBISCUS—HAWAII'S TERRITORIAL FLOWER—By P. J. Rennings



### TO OUR PATRONS

Our kitchen is equipped to prepare any special dishes at moderate prices. Parties and dinners with specially prepared menus may be arranged with our maitre d'hotel.

Kindly ask the Head Waiter for souvenir menus ready for mailing.

The Information Desk is located in the lobby where arrangements may be made for Sports Activities and Motor Tours.



**THE WAIALAE GOLF COURSE** offers you the finest 18 hole golf links in the Territory. Completely equipped clubhouse. Ted Benedict, Professional. Green fees \$2.00 on week days, \$2.50 on Saturdays, Sundays and Holidays. Monthly rates quoted.

**TENNIS.** The Moana-Seaside Courts are available to Guests of the Royal Hawaiian Hotel. Tennis Instruction by Phil Bagby, Professional. Courts may be reserved and appointments for instruction made through the Front Office.

A visit to the Pineapple Company is interesting. Please see the Clerk at desk.

A few of the finest instructors of the HULA have been especially engaged for the benefit of our guests.

We recommend to our guests desiring Chinese Dinners, Lau Yee Chai, Kalakaua Avenue (Chop Suey House, Finest Chinese cooking, immaculate cleanliness. Typical background).

**CIRCULATING LIBRARY.** Latest Fiction and Books on the Islands. In Arcade.

### EVENTS OF THE DAY - PRESENTED BY JOHNNY NOBLE

DANCING ON THE WAIKIKI LANAI - - - - 8:30 P. M.  
Music by Harry Owens and his Royal Hawaiians.



ROYAL HAWAIIAN HOTEL

## DINNER

### HORS D'OEUVRES

Fruit Cocktail Orette  
Chilled Celery Heart    Salted Nuts    Mixed Olives    Artichoke Lucille  
Pearl Onions    Italian Plate    Cheese Sticks    Cucumber Rings

### SOUP

Consomme Olga    Cream of Nymph Chartreuse  
Consomme, Essence of Tomato or Chicken Broth in Cup, Hot or in Jelly

### FISH

Filet of Red Snapper Saute Hamilton

### ENTREES

Fresh Mushrooms in Cream Underglass  
**SPECIAL TODAY:** Old Fashion Beef Stew Country Style  
Rack of Spring Lamb en Casserole Garni  
Stuffed Tomato Menagere  
Brioche of Fresh Fruit Compote  
Lemon Punch

### ROAST

Prime Ribs of Blue Ribbon Island Beef, au Jus  
Maui Tom Turkey, Banana Stuffing, Cranberry Jelly

### STRICTLY FRESH VEGETABLE

Green Peas in Mint    Fried Zucchini    Cauliflower Saute  
Carrots Vichy    Wainaku Lehua Poi    Boiled Rice  
Potatoes—New Haw'n Rose, Mashed or Minute

### SALAD

#### YOUR FAVORITE SALAD PREPARED TO ORDER

Mixed Green    Mango    Watercress & Egg    Lettuce & Tomato

#### A BIT OF SWEET MAKES THE MEAL COMPLETE

### DESSERT

Moka Butter Cake  
French Pastry    Coffee, Vanilla & Caramel Cup Custard  
From Our Own Grove Coconut Layer Cake

### ICE CREAM

Parfait Nesselrode  
From our own grove Coconut Ice Cream  
Fresh Peach Ice Cream

Coffee    French Vanilla    Chocolate    Strawberry

### FRESH FRUIT

Pineapple    Apple    Papaia    Orange    Banana  
Honeydew    Watermelon    Peaches    Apricot    Cherries  
Plums    Perisan Melon    Casaba Melon

### CHEESE

Imported Swiss    American    Camembert    Roquefort  
Nuts & Raisins    African Dates  
Demi Tasse

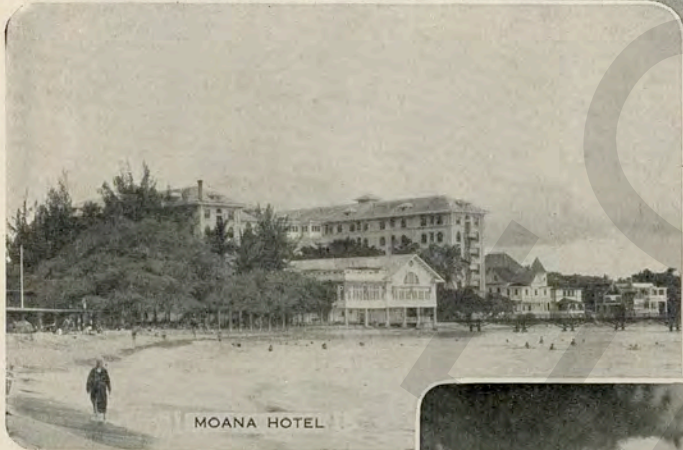
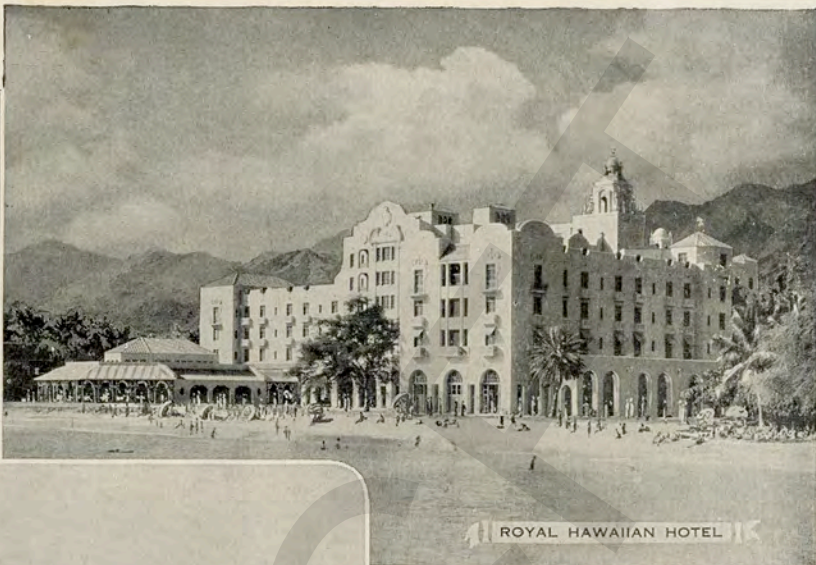
OUR SPECIAL DIABETIQUE BREAD  
ROYAL HAWAIIAN SPECIAL FULL BRAN HEALTH BREAD  
EGGS, CREAM & MILK SUPPLIED BY OUR OWN RANCH & DAIRY.

Dishes ordered that are not on the Menu will be charged extra  
ROOM SERVICE, 25 CENTS EXTRA EACH PERSON.

HONOLULU, HAWAII.

MONDAY, JULY 29, 1935







THE ROYAL HAWAIIAN HOTEL STANDS ON THE PLAYGROUND OF ANCIENT KINGS—Photo by Post



### TO OUR PATRONS

Our kitchen is equipped to prepare any special dishes at moderate prices. Parties and dinners with specially prepared menus may be arranged with our maitre d'hotel.

Kindly ask the Head Waiter for souvenir menus ready for mailing.

The Information Desk is located in the lobby where arrangements may be made for Sports Activities and Motor Tours.



**THE WAIALAE GOLF COURSE** offers you the finest 18 hole golf links in the Territory. Completely equipped clubhouse. Ted Benedict, Professional. Green fees \$2.00 on week days, \$2.50 on Saturdays, Sundays and Holidays. Monthly rates quoted.

**TENNIS.** The Moana-Seaside Courts are available to Guests of the Royal Hawaiian Hotel. Tennis Instruction by Phil Bagby, Professional. Courts may be reserved and appointments for instruction made through the Front Office.

A visit to the Pineapple Company is interesting. Please see the Clerk at desk.

A few of the finest instructors of the HULA have been especially engaged for the benefit of our guests.

We recommend to our guests desiring Chinese Dinners, Lau Yee Chai, Kalakaua Avenue (Chop Suey House, Finest Chinese cooking, immaculate cleanliness. Typical background).

**CIRCULATING LIBRARY.** Latest Fiction and Books on the Islands. In Arcade.

### EVENTS OF THE DAY - PRESENTED BY JOHNNY NOBLE

#### AFTERNOON TEA SERVED ON WAIKIKI LANAI 3:30

HAWAIIAN HULA AND SONGS - - - - 8:30 P. M.

Dorothy Kaholomoana Campbell & pupils, assisted by Kanae's Haw'ns.

Hawaiian Concert at Banyan Court (Moaa-Seaside Hotel) - 8:15 p. m.

Direction: Sam Alama.



ROYAL HAWAIIAN HOTEL

## LUNCHEON

Pineapple Juice, Fresh Island Tomato Juice or Poi Cocktail, Chef's Special  
 Tomato Provencale Green Onions Garden Radishes Italian Plate  
 Pickled Pineapple Lomi Lomi Salmon Tunafish Salad  
 Marinated Sprats

### SOUP

Consomme Judic Chicken Giblet Creole  
 Consomme, Essence of Tomato or Chicken Broth in Cup, Hot or in Jelly

### FISH

Fried Shrimps Royal Dressing

### ENTREES

French Fried Egg Cavour  
 Eggs Boulangere  
 Stewed Turkey Wings Jardiniere  
 Polpettini Paupiette Milanaise

### SPECIAL TODAY Our Own Cured Brisket of Corned Beef & Cabbage

Vegetable Plate with Corn Fritter  
 Home Made Spatzelles Noisette

PAPAI HAUPIA "COLD HAWAIIAN CRABMEAT"

Fruit Luncheon Plate Tropical

### FROM THE GRILL

Mixed Grill Royal Hawaiian

### STRICTLY FRESH VEGETABLE

Boiled Onions in Cream Chopped Luau Wax Beans

Wainaku Lehua Poi Boiled Rice

Potatoes—Special Baked, Mashed, New Haw'n Rose or Hashed Brown

### COLD BUFFET

Roast Spring Chicken York or Prague Ham Sliced Chicken Ox Tongue

Melton Mowbray Pie Prime Ribs of Beef Horseradish

Galantine of Capon Veal Loaf Country Style

Home-Made Head Cheese Pickled Beets

### SALAD

#### YOUR FAVORITE SALAD PREPARED TO ORDER

Mixed Green White & Red Cabbage Slaw Potato Alligator Pear  
 Carrots & Radishes

A BIT OF SWEET MAKES THE MEAL COMPLETE

### DESSERT AND ICE CREAM

French Pastry Fresh Cocoanut Cream Pie Fresh Apple Pie

Coffee & Vanilla Cup Custard Cold Cabinet Custard Pudding

From Our Own Grove Cocoanut Layer Cake

Coffee, Strawberry, Chocolate or French Vanilla Ice Cream

From our own Grove, Cocoanut Ice Cream Fresh Peach Ice Cream

### FRESH FRUIT

Plums Watermelon Apple Banana Papaia Pineapple Orange

Persian Melon Casaba Melon Peaches Apricot Cherries

### CHEESE

Schabzieger Philadelphia Cream Old English Cottage

English Stilton Bel Paese Edam Neufchatel

AFRICAN DATES NUTS & RAISINS

COFFEE TEA MILK

OUR SPECIAL DIABETIQUE BREAD

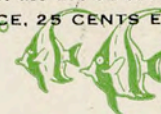
ROYAL HAWAIIAN SPECIAL FULL BRAN HEALTH BREAD

EGGS, CREAM & MILK SUPPLIED BY OUR OWN RANCH & DAIRY.

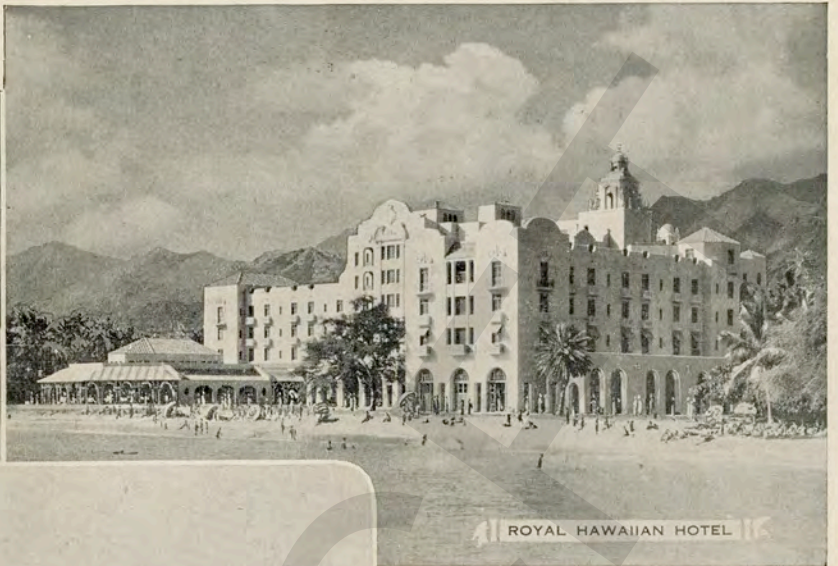
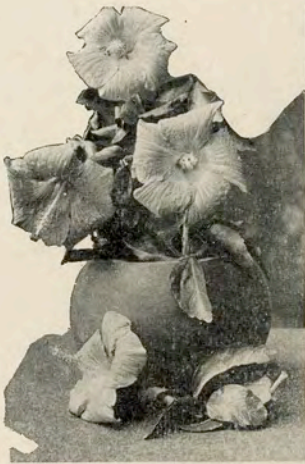
Dishes ordered that are not on the Menu will be charged extra

ROOM SERVICE, 25 CENTS EXTRA EACH PERSON.

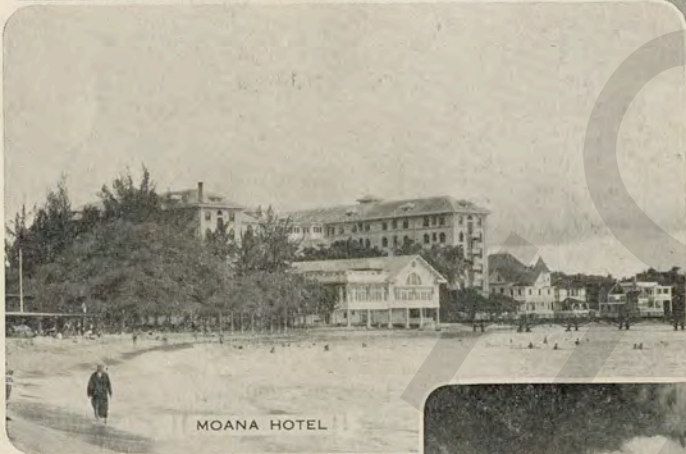
HONOLULU, HAWAII.



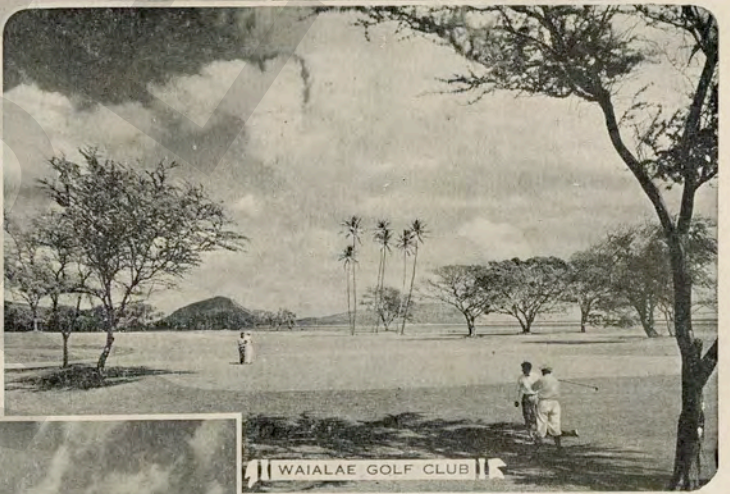
TUESDAY, JULY 30, 1935



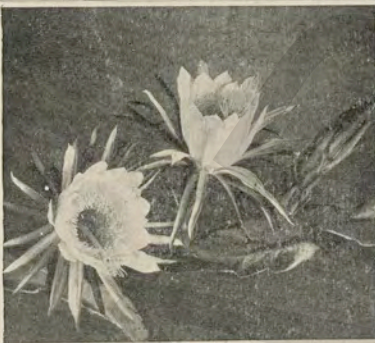
ROYAL HAWAIIAN HOTEL



MOANA HOTEL



WAIALAE GOLF CLUB



SEASIDE HOTEL





THE FLAMING POINCIANA REGIA—By Helen T. Dranga



### TO OUR PATRONS

Our kitchen is equipped to prepare any special dishes at moderate prices. Parties and dinners with specially prepared menus may be arranged with our maitre d'hotel.

Kindly ask the Head Waiter for souvenir menus ready for mailing.

The Information Desk is located in the lobby where arrangements may be made for Sports Activities and Motor Tours.



**THE WAIALAE GOLF COURSE** offers you the finest 18 hole golf links in the Territory. Completely equipped clubhouse. Ted Benedict, Professional. Green fees \$2.00 on week days, \$2.50 on Saturdays, Sundays and Holidays. Monthly rates quoted.

**TENNIS.** The Moana-Seaside Courts are available to Guests of the Royal Hawaiian Hotel. Tennis Instruction by Phil Bagby, Professional. Courts may be reserved and appointments for instruction made through the Front Office.

A visit to the Pineapple Company is interesting. Please see the Clerk at desk.

A few of the finest instructors of the HULA have been especially engaged for the benefit of our guests.

We recommend to our guests desiring Chinese Dinners, Lau Yee Chai, Kalakaua Avenue (Chop Suey House, Finest Chinese cooking, immaculate cleanliness. Typical background).

**CIRCULATING LIBRARY.** Latest Fiction and Books on the Islands. In Arcade.

### EVENTS OF THE DAY - PRESENTED BY JOHNNY NOBLE

**AFTERNOON TEA SERVED ON WAIKIKI LANAI 3:30**

**HAWAIIAN CONCERT** - - - 8:30 P. M.  
Direction: Sam Alama.

**DANCING ON THE BANYAN LANAI** (Moana-Seaside Hotel) - 9:00 p. m.  
Music by Harry Owens and his Royal Hawaiians.



Pineapple Juice, Fresh Island Tomato Juice or Poi Cocktail, Chef's Special  
Green Onions Garden Radishes Chow Chow Tuna Fish Salad  
Herring Maharaja Sliced Egg & Tomato Vinaigrette  
Imported Salami Sausage Pickled Pig's Feet

#### SOUP

Phosphorus Health Broth Puree of Fresh Peas St. Germain  
Consomme, Essence of Tomato or Chicken Broth in Cup, Hot or in Jelly

#### FISH

Fried Deep Sea Scallops & Bacon

#### ENTREES

Poached Egg Bombay  
Egg Cocotte Petit Duc  
Veal Kidney Saute Turbigo

**SPECIAL TODAY:** Spring Lamb Stew Irish Style  
Braised Beef a la Mode with Young Carrots  
Fresh Vegetable Plate with Coddled Egg  
Fried Polenta in Butter

**PAPAI HAUPIA "COLD HAWAIIAN CRABMEAT"**  
Fruit Luncheon Plate Tropical

#### FROM THE GRILL

Broiled Ham Steak, Puree of Lima Beans

#### STRICTLY FRESH VEGETABLE

Beans Panache Zucchini Saute Swiss Chard Melted Butter  
Fried Parsnips Wainaku Lehua Poi Boiled Rice  
Potatoes—Special Baked, Mashed, New Haw'n Rose or Saute

#### COLD BUFFET

Roast Spring Chicken York or Prague Ham Sliced Chicken Ox Tongue  
Melton Mowbray Pie Prime Ribs of Beef Horseradish  
Galantine of Capon Veal Loaf Country Style  
Home-Made Head Cheese Pickled Beets Pressed Chicken & Ham in Jelly

#### SALAD

##### YOUR FAVORITE SALAD PREPARED TO ORDER

Carrots Slaw Island Lettuce, Roquefort Dressing Alligator Pear  
Mango Mixed Green

A BIT OF SWEET MAKES THE MEAL COMPLETE

#### DESSERT AND ICE CREAM

French Pastry Red Cherry Pie Fresh Apple Pie  
Coffee & Vanilla Cup Custard Apple Charlotte Custard Pudding  
From Our Own Grove Coconut Layer Cake  
Coffee, Strawberry, Chocolate or French Vanilla Ice Cream  
From our own Grove, Coconut Ice Cream Fresh Peach Ice Cream

#### FRESH FRUIT

Plums Watermelon Apple Banana Papaia Pineapple, Orange  
Nectarine Casaba Melon Peaches

#### CHEESE

Schabzieger Philadelphia Cream Old English Cottage  
English Stilton Bel Paise Edam Neufchatel  
AFRICAN DATES NUTS & RAISINS  
COFFEE TEA MILK

OUR SPECIAL DIABETIQUE BREAD  
ROYAL HAWAIIAN SPECIAL FULL BRAN HEALTH BREAD

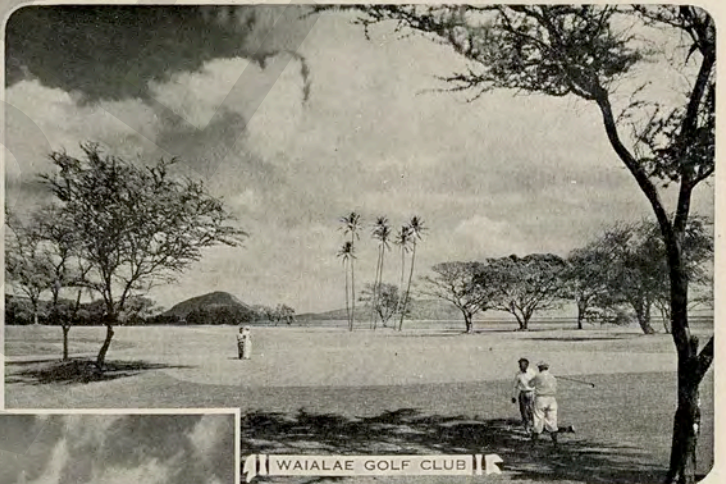
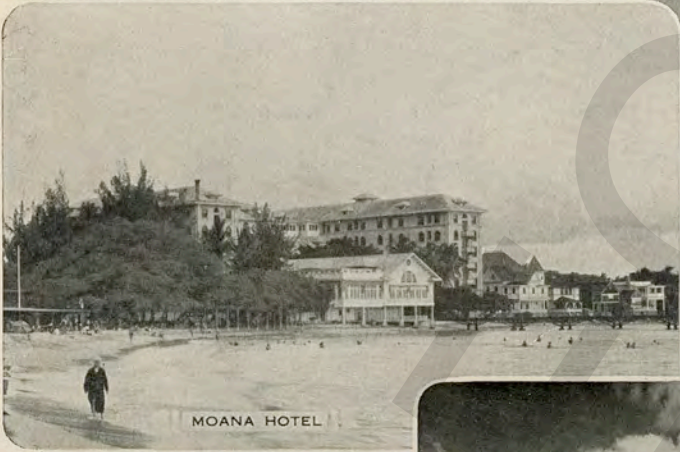
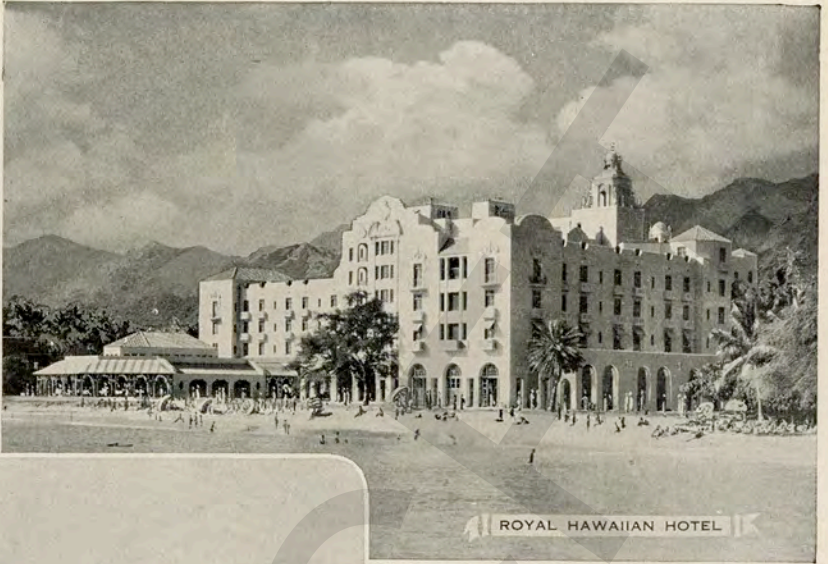
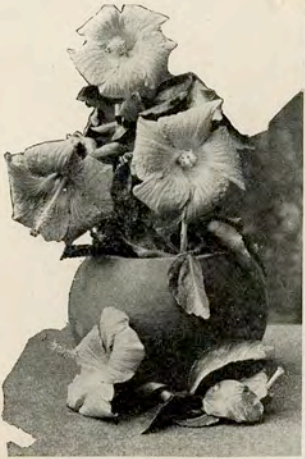
EGGS, CREAM & MILK SUPPLIED BY OUR OWN RANCH & DAIRY.

Dishes ordered that are not on the Menu will be charged extra

ROOM SERVICE, 25 CENTS EXTRA EACH PERSON.

HONOLULU, HAWAII. WEDNESDAY, AUGUST 7, 1935







DAWN ON THE LAGOON—By Max Freedom, The Camera Shop



### TO OUR PATRONS

Our model kitchens are equipped to prepare special dishes, not on the menu, at moderate prices.

Parties and dinners with specially prepared menus may be arranged with our maitre d'hotel.

Kindly ask the Head Waiter for souvenir menus ready for mailing.

The Information Desk is located in the lobby, where arrangements may be made for Sports Activities and Motor Tours.



THE WAIALAE GOLF COURSE offers you the finest 18-hole golf links in the Territory. Completely equipped clubhouse. Ted Benedict, Professional. Green fees \$2.00 on week days, \$2.50 on Saturdays, Sundays and Holidays. Monthly rates quoted.

TENNIS. The Moana-Seaside Courts are available to Guests of the Royal Hawaiian Hotel. Tennis Instruction by Phil Bagby, Professional. Courts may be reserved and appointments for instruction made through the Front Office.

A visit to the pineapple cannery is interesting. Please see the clerk at the front desk.

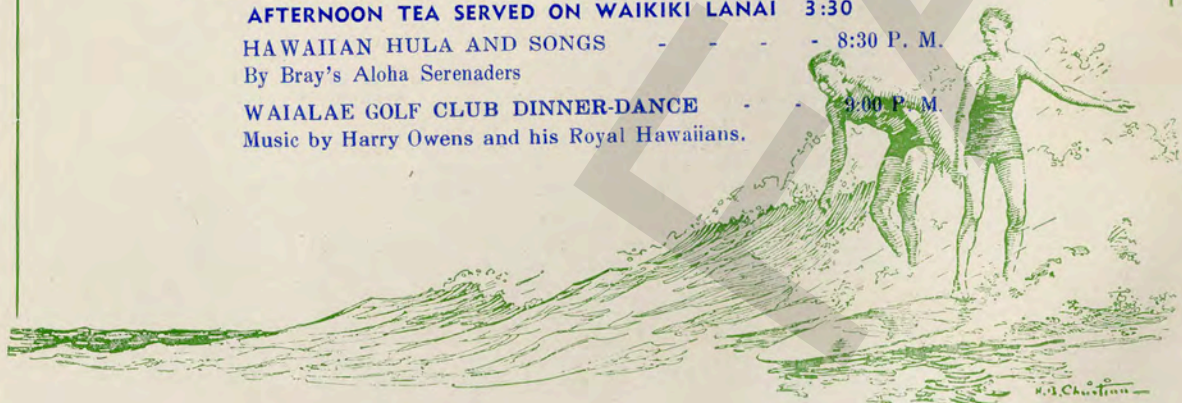
To our guests desiring Chinese dinners, we recommend "Lau Yee Chai," located on Kalakaua Avenue. Finest Chinese cooking, immaculate cleanliness. Typical background.

CIRCULATING LIBRARY. Latest Fiction and Books on the Islands. In Arcade.

### EVENTS OF THE DAY—PRESENTED BY JOHNNY NOBLE

**AFTERNOON TEA SERVED ON WAIKIKI LANAI 3:30**  
**HAWAIIAN HULA AND SONGS - - - - 8:30 P. M.**  
 By Bray's Aloha Serenaders

**WAIALAE GOLF CLUB DINNER-DANCE - - - - 9:00 P. M.**  
 Music by Harry Owens and his Royal Hawaiians.



ROYAL HAWAIIAN HOTEL

## LUNCHEON

Pineapple Juice, Fresh Island Tomato Juice or Poi Cocktail, Chef's Special  
 Green Onions Pickled Lamb's Tongue Mango Chutney Tunafish Salad  
 Lomi Lomi Salmon Herring Maharaja Garden Radishes  
 Imported French Sardines Sliced Egg with Tomato Vinaigrette

### SOUP

Calcium Health Broth Fresh Kaneohe Clam Chowder Sandy Hook  
 Consomme, Essence of Tomato or Chicken Broth in Cup, Hot or in Jelly

### FISH

Baked Stuffed Yellow Tail au Four Sauce Piquante

### ENTREES

Omelette Fines Herbes  
 Sliced Egg a la Tripe  
 Stuffed Chicken Legs Rizotto Genoise  
 Top Sirloin Steak Saute Bordelaise  
**SPECIAL TODAY:** Navarin of Spring Lamb au Primeurs  
 Fresh Vegetable Plate with Creamed Finnan Haddie  
 Raviolis Piemontaise

PAPA! HAUPIA "COLD HAWAIIAN CRABMEAT"

Fruit Luncheon Plate Tropical

### FROM THE GRILL

Broiled Calf Liver and Bacon Mousseline Potatoes

### STRICTLY FRESH VEGETABLE

Chopped Spinach Buttered Beets Wax Beans  
 Creamed Summer Squash Wainaku Lehua Poi Boiled Rice  
 Potatoes—Special Baked, Mashed, New Haw'n Rose or Maitre d'Hotel

### COLD BUFFET

Roast Spring Chicken York or Prague Ham Sliced Chicken Ox Tongue  
 Melton Mowbray Pie Prime Ribs of Beef Horseradish  
 Galantine of Capon Veal Loaf Country Style  
 Home-Made Head Cheese Pickled Beets Pressed Chicken & Ham in Jelly

### SALAD

#### YOUR FAVORITE SALAD PREPARED TO ORDER

Mango Chicory & Beets Mixed Green Alligator Pear  
 Pineapple & Cottage Cheese

A BIT OF SWEET MAKES THE MEAL COMPLETE

### DESSERT AND ICE CREAM

French Pastry Lemon Cream Pie Fresh Apple Pie  
 Coffee & Vanilla Cup Custard Fresh Peach Souffle Pudding  
 From Our Own Grove Coconut Layer Cake  
 Coffee, Strawberry, Chocolate or French Vanilla Ice Cream  
 From our own Grove, Coconut Ice Cream Fresh Peach Ice Cream

### FRESH FRUIT

Plums Watermelon Apple Banana Papaia Pineapple Orange  
 Persian Melon Nectarine Casaba Melon Peaches Cantaloupe

### CHEESE

Schabzieger Philadelphia Cream Old English Cottage  
 English Stilton Bel Paese Edam Neufchatel

AFRICAN DATES NUTS & RAISINS  
 COFFEE TEA MILK

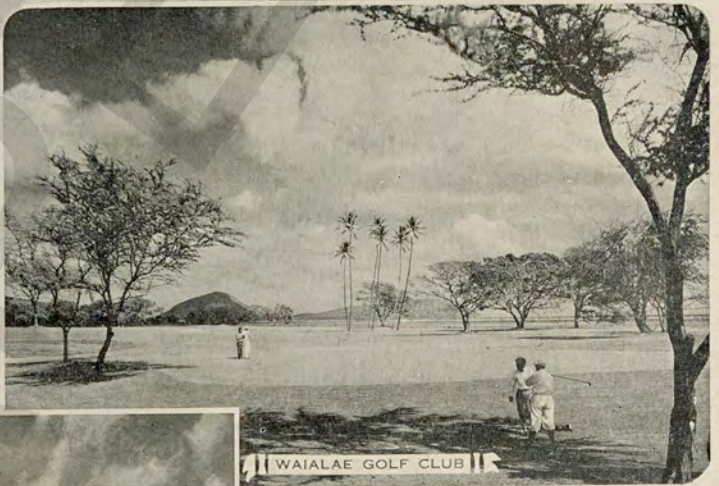
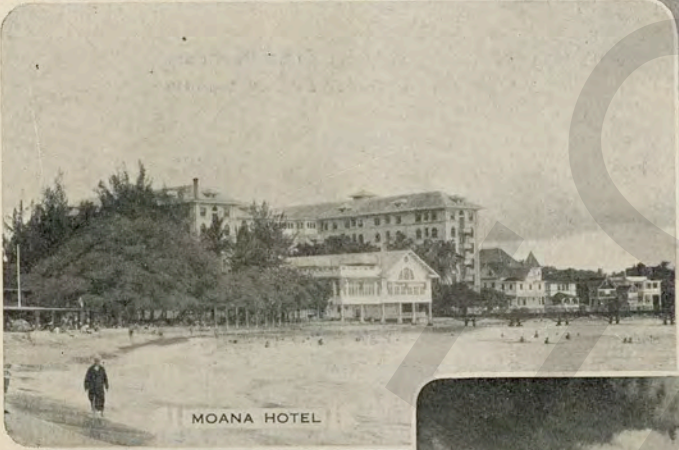
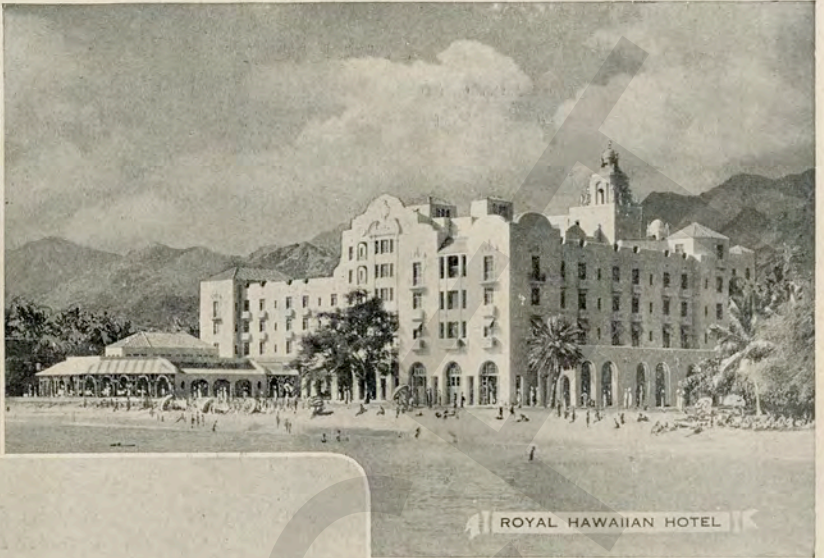
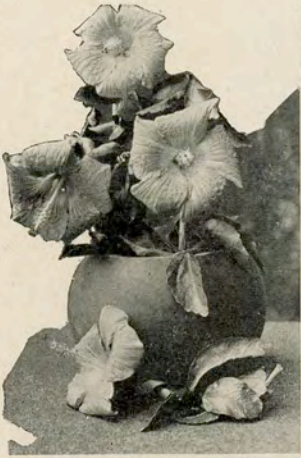
OUR SPECIAL DIABETIQUE BREAD  
 ROYAL HAWAIIAN SPECIAL FULL BRAN HEALTH BREAD  
 EGGS, CREAM & MILK SUPPLIED BY OUR OWN RANCH & DAIRY.

Dishes ordered that are not on the Menu will be charged extra  
 ROOM SERVICE, 25 CENTS EXTRA EACH PERSON.

HONOLULU, HAWAII.

FRIDAY, AUGUST 9, 1935







NUUANU PALI, OAHU

—Photo by A.C., U.S.A.



### TO OUR PATRONS

Our kitchen is equipped to prepare any special dishes at moderate prices. Parties and dinners with specially prepared menus may be arranged with our maitre d'hotel.

Kindly ask the Head Waiter for souvenir menus ready for mailing.

The Information Desk is located in the lobby where arrangements may be made for Sports Activities and Motor Tours.



**THE WAIALAE GOLF COURSE** offers you the finest 18 hole golf links in the Territory. Completely equipped clubhouse. Ted Benedict, Professional. Green fees \$2.00 on week days, \$2.50 on Saturdays, Sundays and Holidays. Monthly rates quoted.

**TENNIS.** The Moana-Seaside Courts are available to Guests of the Royal Hawaiian Hotel. Tennis Instruction by Phil Bagby, Professional. Courts may be reserved and appointments for instruction made through the Front Office.

A visit to the Pineapple Company is interesting. Please see the Clerk at desk.

A few of the finest instructors of the HULA have been especially engaged for the benefit of our guests.

We recommend to our guests desiring Chinese Dinners, Lau Yee Chai, Kalakaua Avenue (Chop Suey House, Finest Chinese cooking, immaculate cleanliness. Typical background).

**CIRCULATING LIBRARY.** Latest Fiction and Books on the Islands. In Arcade.

**AFTERNOON TEA SERVED ON WAIKIKI LANAI 3:30**



ROYAL HAWAIIAN HOTEL

GOOD MORNING

## BREAKFAST

FRESH FRUIT IN SEASON

[According to Market]

|   |               |              |           |      |
|---|---------------|--------------|-----------|------|
| Sliced Orange                                 | Sliced Banana | Papaia       | Pineapple | Figs |
| Grapefruit                                    | Baked Apples  | Stewed Pears | Grapes    |      |
| Pineapple, Orange, Tomato or Sauerkraut Juice |               |              |           |      |

PRESERVED FRUIT

|                     |                   |                 |       |        |
|---------------------|-------------------|-----------------|-------|--------|
| Peaches,            | Apricot,          | Bartlett Pears, | Figs, | Prunes |
| Royal Anne Cherries | Fresh Apple Sauce |                 |       |        |

HAWAIIAN JAMS, ETC.

|                                       |                                    |
|---------------------------------------|------------------------------------|
| Poha, Pineapple, Ambrosia & Guava Jam | Guava, Rosella & Poha Jelly        |
| Strained Honey                        | Home Made Papaia Jam and Guava Jam |

JAMS, MARMALADE

|   |                                    |
|---|------------------------------------|
| Orange and Grapefruit Marmalade, Bar le duc | Currant Jelly                      |
| Strawberry & Raspberry Jam                  | Home Made Orange and Pineapple Jam |

CEREALS

|             |              |                |                |
|-------------|--------------|----------------|----------------|
| Wheatena    | Puffed Wheat | Shredded Wheat | Cream of Wheat |
| Bran Flakes | Corn Flakes  | All Bran       | Rolled Oats    |
|             | Puffed Rice  | Grape Nuts     | Boiled Rice    |

°TEN MINUTES

|         |         |               |                |
|---------|---------|---------------|----------------|
| °Farina | °Hominy | °Wheat Hearts | °Cracked Wheat |
|---------|---------|---------------|----------------|

FISH

[Salted, Smoked and Fresh]

|   |  |                            |
|---|--|----------------------------|
| Opakapaka Meuniere                                | Broiled Kumu                           | Codfish Cake, Tomato Sauce |
| Kipperd Herring                                   | Finnan Haddie in Cream                 | Kahala Meuniere            |
| Steamed Salt Mackerel                             | Filet of Sole Fried, Saute or Meuniere |                            |
| Poached Mahimahi, Melted Butter, Broiled or Saute | Bloaters                               |                            |
| Steamed, Smoked Alaska Cod, Melted Butter         |  |                            |

EGGS

Shirred, Plain or with Brown Butter, Scrambled, Boiled, Fried or Poached with Ham or Bacon

OMELETTES

|           |               |             |           |            |          |
|-----------|---------------|-------------|-----------|------------|----------|
| Plain,    | Fines Herbes, | Parmentier, | Chasseur, | Princesse, | Spanish  |
| Lyonnaise | Ham           | Cheese      | Tomato    | Creole     | Savoyard |
| Jelly     |               |             |           |            |          |

MISCELLANEOUS

|                        |                        |                                     |
|------------------------|------------------------|-------------------------------------|
| Chicken Hash in Cream  | Sausage Cake           | Tripe Lyonnaise or Creamed          |
| Home Made Pork Sausage | Breakfast Steak,       | French Lamb Chops                   |
| Broiled Ham            | Pork Chop              | Virginia Bacon                      |
| Chipped Beef in Cream  | Calf's Liver and Bacon |                                     |
| Broiled Lamb Kidneys   | Liver Pate             | Broiled Brochette of Chicken Livers |

POTATOES

|                      |                  |                |
|----------------------|------------------|----------------|
| Saute, Hashed Brown, | Hashed in Cream, | French Fried   |
| Fried Sweet          | Lyonnaise        | American Fried |

ROLLS, CAKES, TOASTS

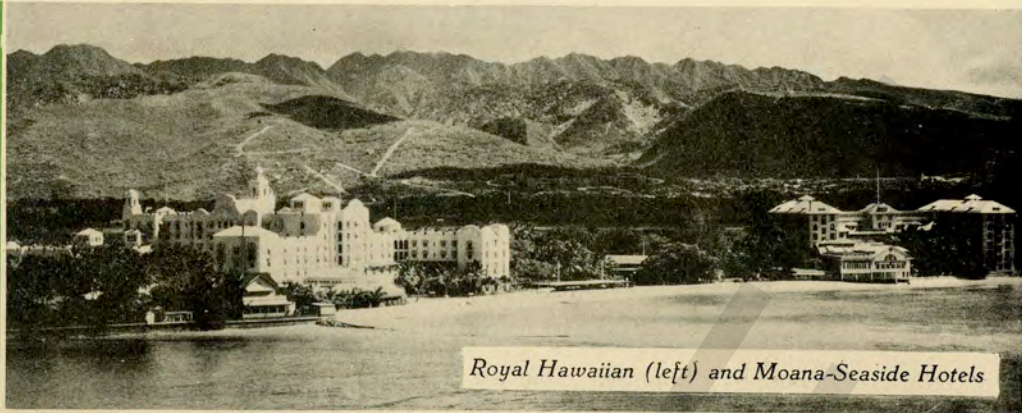
|                       |                                  |                      |
|-----------------------|----------------------------------|----------------------|
| Buttered or Dry Toast | Buckwheat Cakes with Maple Syrup | Ry Krisp             |
| Bran or Corn Muffins  | Griddle Cake with Hawaiian Honey |                      |
| French Split Rolls    | Toasted Raisin & Nut Bread       | Graham Roll          |
| Poppovers             | French Crescent                  | Streusel Coffee Cake |
| Bear Claus            | Snails                           | Parker House Buns    |

TEA, COFFEE, ETC.

|  |                        |
|--|------------------------|
| Oolong, Green, English Breakfast or Ceylon Tea | Individual Bottle Milk |
| Cocoa, Instant Postum, Coffee                  | Milk, Kaffee Hag       |
| Chocolate                                      |                        |

Any dishes ordered that are not on the Menu will be charged extra. Room Service 25c extra each person

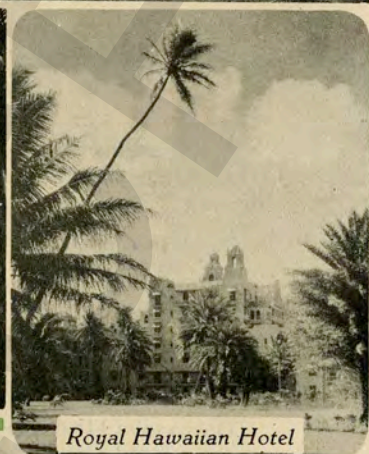
Eggs, Cream and Milk supplied by our own Ranch and Dairy.



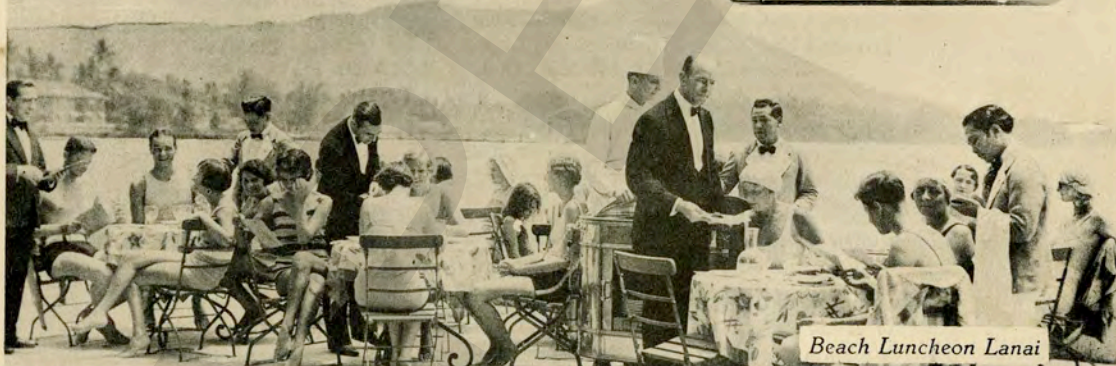
*Royal Hawaiian (left) and Moana-Seaside Hotels*



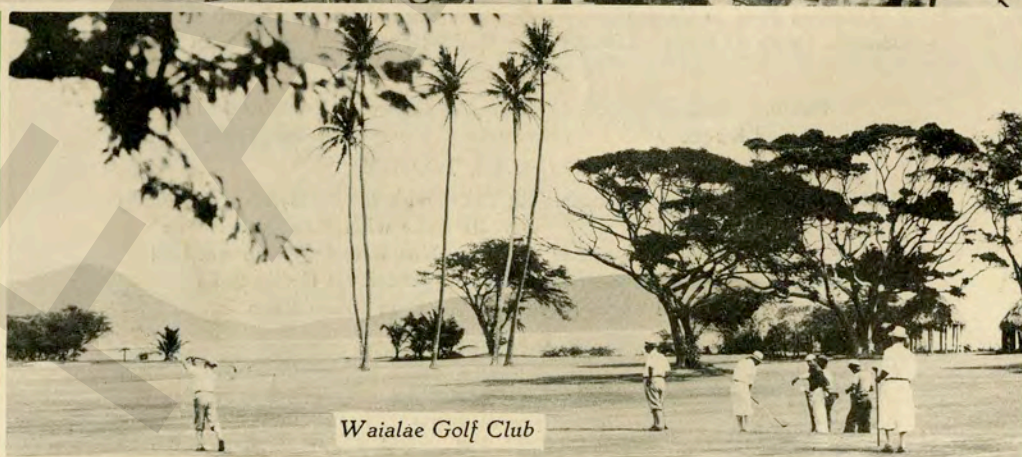
*Moana-Seaside Hotel and Bungalows*



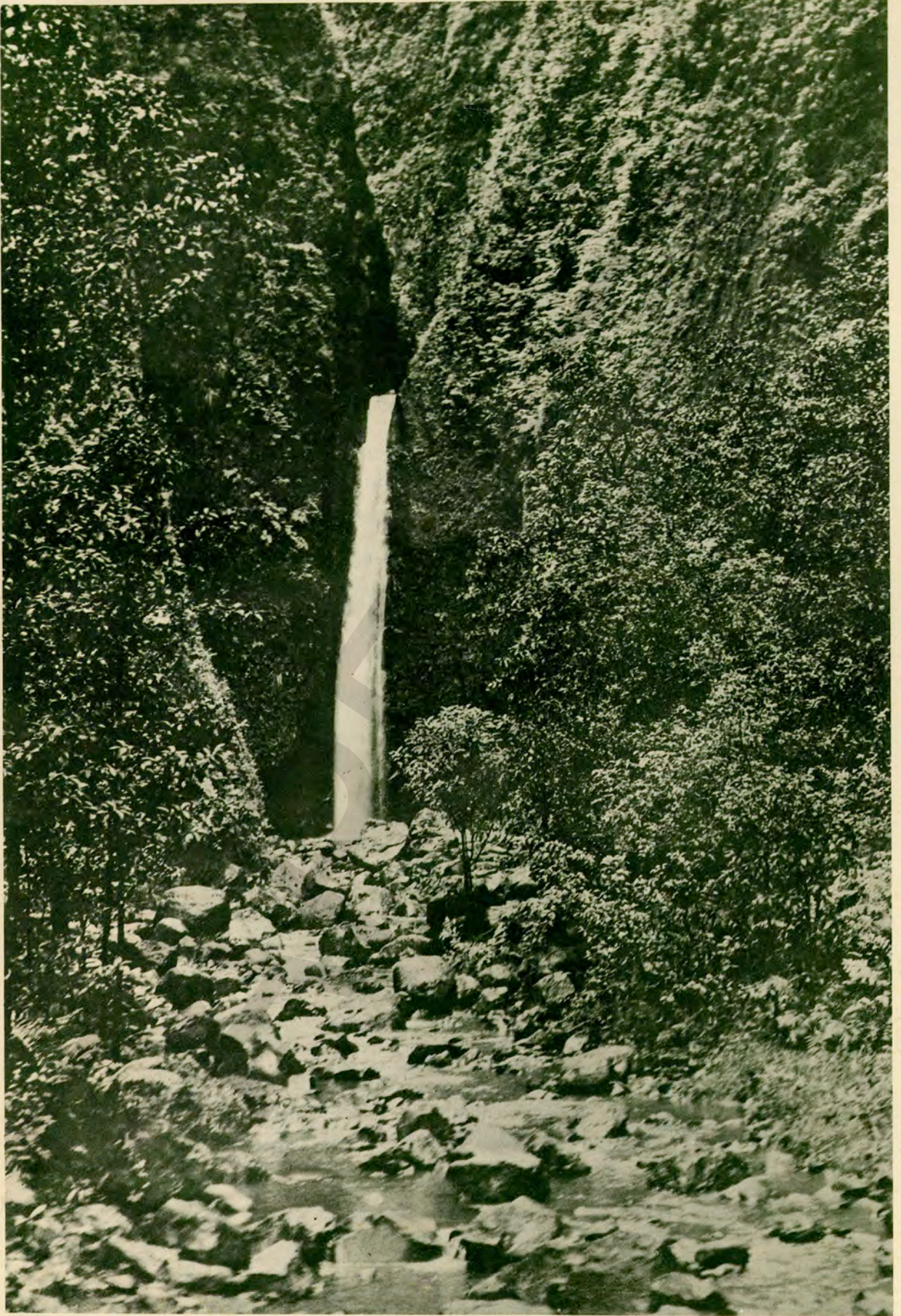
*Royal Hawaiian Hotel*



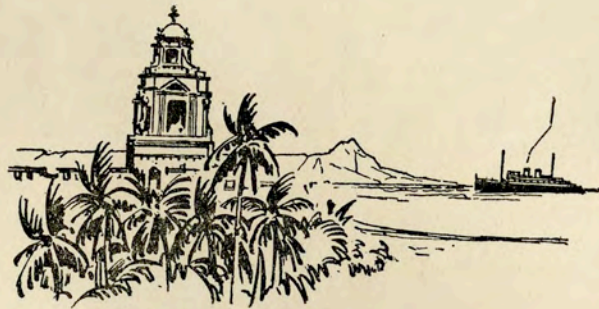
*Beach Luncheon Lanai*



*Waialae Golf Club*



SACRED FALLS, OAHU



### TO OUR PATRONS

Our kitchen is equipped to prepare any special dishes at moderate prices. Parties and dinners with specially prepared menus may be arranged with our maitre d'hotel.

Kindly ask the Head Waiter for souvenir menus ready for mailing.

The Information Desk is located in the lobby where arrangements may be made for Sports Activities and Motor Tours.



**THE WAIALAE GOLF COURSE** offers you the finest 18 hole golf links in the Territory. Completely equipped clubhouse. Ted Benedict, Professional. Green fees \$2.00 on week days, \$2.50 on Saturdays, Sundays and Holidays. Monthly rates quoted.

**TENNIS.** The Moana-Seaside Courts are available to Guests of the Royal Hawaiian Hotel. Tennis Instruction by Phil Bagby, Professional. Courts may be reserved and appointments for instruction made through the Front Office.

A visit to the Pineapple Company is interesting. Please see the Clerk at desk.

A few of the finest instructors of the HULA have been especially engaged for the benefit of our guests.

We recommend to our guests desiring Chinese Dinners, Lau Yee Chai, Kalakaua Avenue (Chop Suey House, Finest Chinese cooking, immaculate cleanliness. Typical background).

**CIRCULATING LIBRARY.** Latest Fiction and Books on the Islands. In Arcade.

**AFTERNOON TEA SERVED ON WAIKIKI LANAI 3:30**



ROYAL HAWAIIAN HOTEL

GOOD MORNING

## BREAKFAST

FRESH FRUIT IN SEASON

[According to Market]

Sliced Orange    Sliced Banana    Papaia    Pineapple    Figs  
Grapefruit    Baked Apples    Stewed Pears    Grapes  
Pineapple, Orange, Tomato or Sauerkraut Juice

PRESERVED FRUIT

Peaches, Apricot, Bartlett Pears, Figs, Prunes  
Royal Anne Cherries    Fresh Apple Sauce

HAWAIIAN JAMS, ETC.

Poha, Pineapple, Ambrosia & Guava Jam    Guava, Rosella & Poha Jelly  
Strained Honey    Home Made Papaia Jam and Guava Jam

JAMS, MARMALADE

Orange and Grapefruit Marmalade, Bar le duc    Currant Jelly  
Strawberry & Raspberry Jam    Home Made Orange and Pineapple Jam

CEREALS

Wheatena    Puffed Wheat    Shredded Wheat    Cream of Wheat  
Bran Flakes    Corn Flakes    All Bran    Rolled Oats    Poi  
Puffed Rice    Grape Nuts    Boiled Rice

°TEN MINUTES

°Farina    °Hominy    °Wheat Hearts    °Cracked Wheat

FISH

[Salted, Smoked and Fresh]

Opakapaka Meuniere    Broiled Kumu    Codfish Cake, Tomato Sauce  
Kipperd Herring    Finnan Haddie in Cream    Kahala Meuniere  
Steamed Salt Mackerel    Filet of Sole Fried, Saute or Meuniere  
Poached Mahimahi, Melted Butter, Broiled or Saute    Bloaters  
Steamed, Smoked Alaska Cod, Melted Butter

EGGS

Shirred, Plain or with Brown Butter, Scrambled, Boiled, Fried or Poached with Ham or Bacon

OMELETTES

Plain, Fines Herbes, Parmentier, Chasseur, Princesse, Spanish  
Lyonnaise    Ham    Cheese    Tomato    Creole    Savoyard    Jelly

MISCELLANEOUS

Chicken Hash in Cream    Sausage Cake    Tripe Lyonnaise or Creamed  
Home Made Pork Sausage    Breakfast Steak,    French Lamb Chops  
Broiled Ham    Pork Chop    Virginia Bacon    Calf's Liver and Bacon  
Chipped Beef in Cream    Corned Beef or Lamb Hash  
Broiled Lamb Kidneys    Liver Pate    Broiled Brochette of Chicken Livers

POTATOES

Saute, Hashed Brown, Hashed in Cream, French Fried  
Fried Sweet    Lyonnaise    American Fried

ROLLS, CAKES, TOASTS

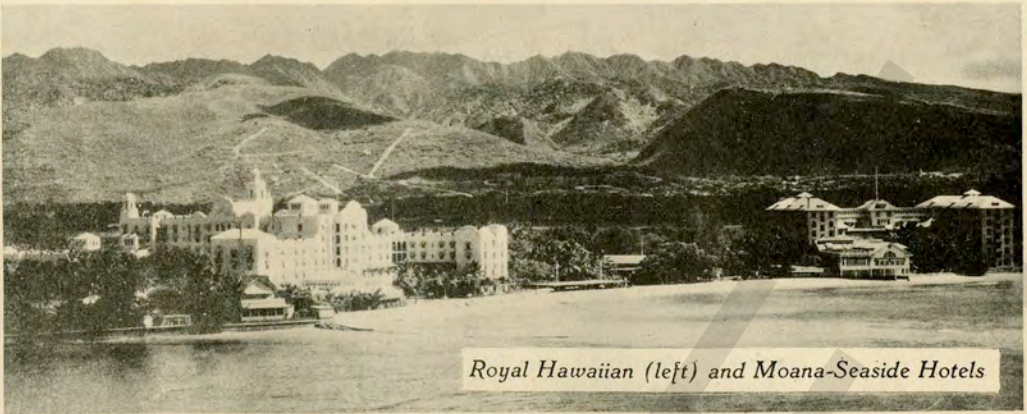
Buttered or Dry Toast    Buckwheat Cakes with Maple Syrup    Ry Krisp  
Bran or Corn Muffins    Griddle Cake with Hawaiian Honey  
French Split Rolls    Toasted Raisin & Nut Bread    Graham Roll  
Poppovers    French Crescent    Streusel Coffee Cake  
Bear Claus    Snails    Parker House Buns

TEA, COFFEE, ETC.

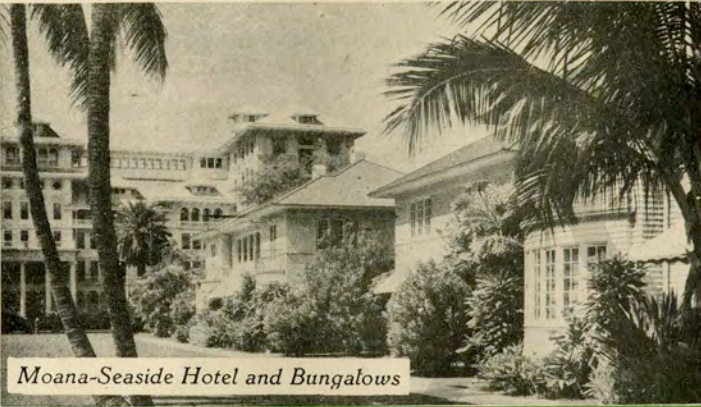
Oolong, Green, English Breakfast or Ceylon Tea    Individual Bottle Milk  
Cocoa, Instant Postum, Coffee    Chocolate    Milk, Kaffee Hag

Any dishes ordered that are not on the Menu will be charged extra.  
Room Service 25c extra each person

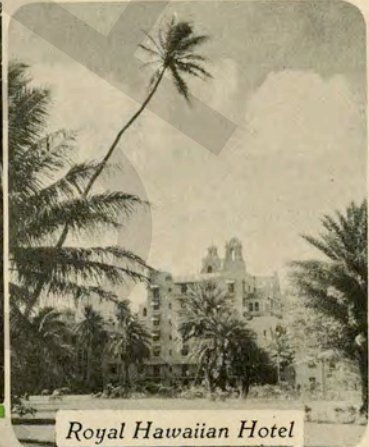
Eggs, Cream and Milk supplied by our own Ranch and Dairy.



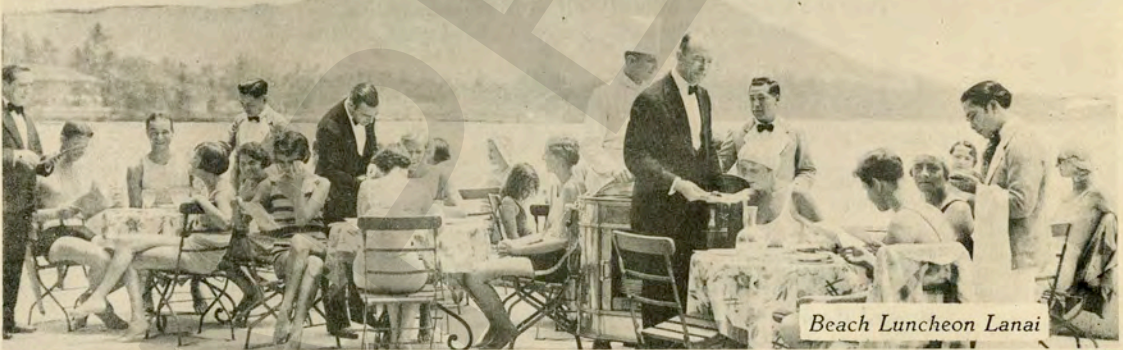
*Royal Hawaiian (left) and Moana-Seaside Hotels*



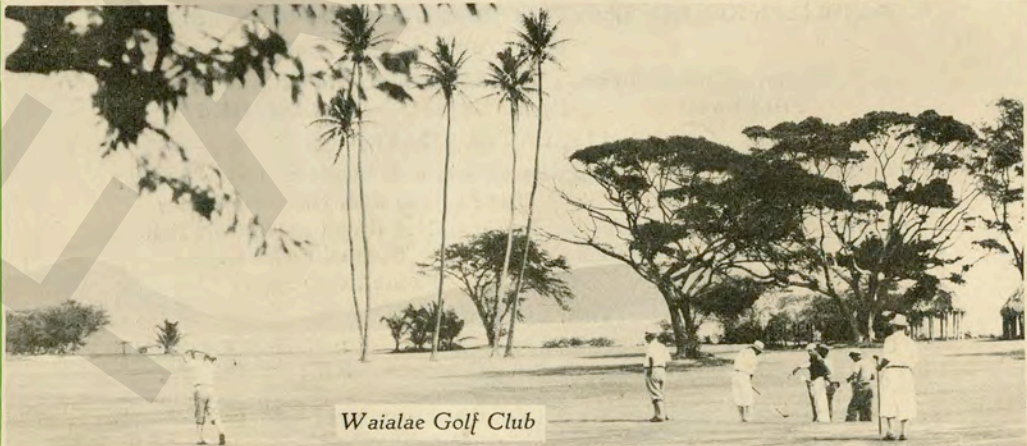
*Moana-Seaside Hotel and Bungalows*



*Royal Hawaiian Hotel*



*Beach Luncheon Lanai*



*Waialae Golf Club*

ESTADO DE CUENTA:-----JULIO 19 a OCTUBRE 10.

|                           |                               |                   |
|---------------------------|-------------------------------|-------------------|
| Recibido en Navolato: --- | Efectivo en billetes, -----   | \$3.000.00        |
|                           | Chech s/ Banco Sinaloa, ----- | 5.000.00          |
|                           | Total:-----                   | <u>\$8.000.00</u> |

Gastos del Sr.Gral.P.E.Calles:

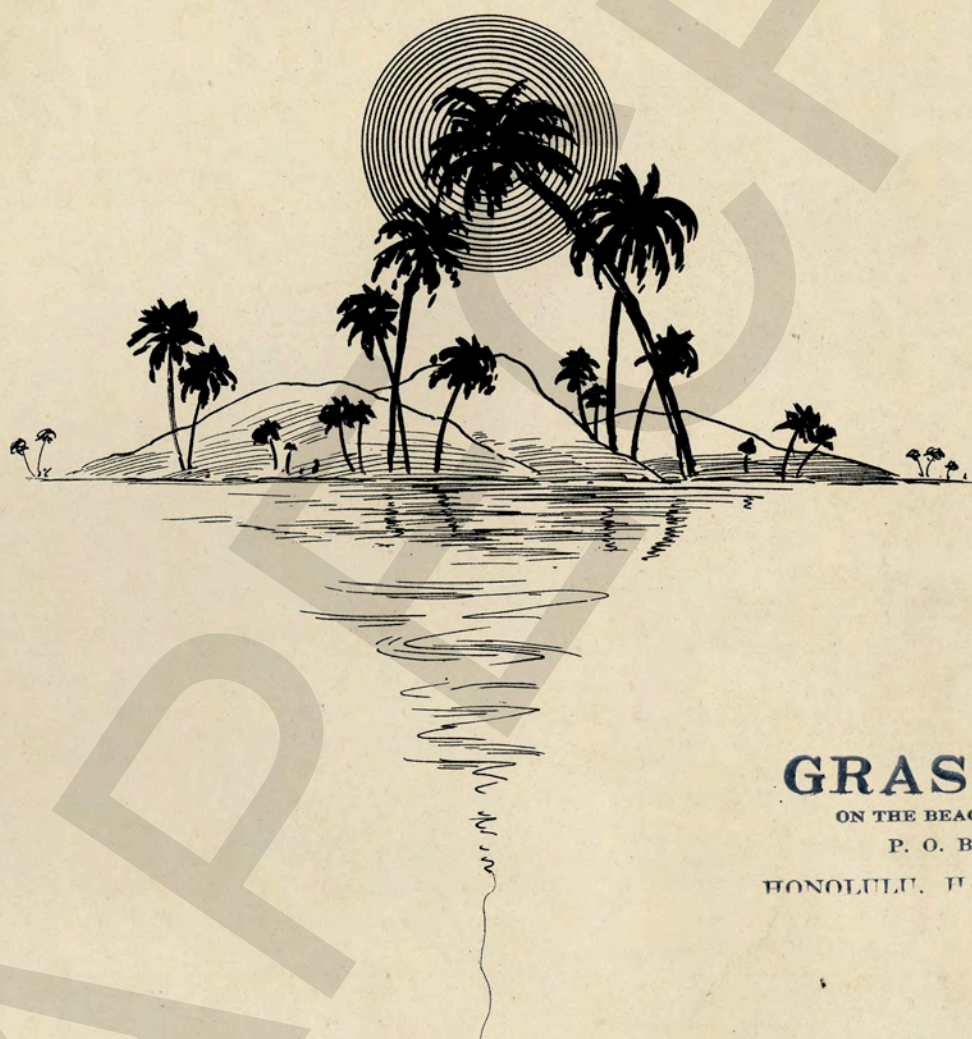
|  |                   |
|--|-------------------|
| Dentista en San Diego, -----                         | 985.00            |
| Pasajes Barco ida y vuelta, -----                    | 425.00            |
| Entregado a Norma (cuelga) -----                     | 50.00             |
| Efectivo en mano en Honolulu, -----                  | 100.00            |
| Total de <u>GASTOS GENERALES</u> hechos desde nues-- |                   |
| tra llegada a SanDiego hasta nuestro ---             |                   |
| regreso <del>en</del> a LosAngeles, -----            | \$3.090.00        |
| Tercera parte que le corresponden al General         |                   |
| de estos gastos generales, -----                     | 1.030.00          |
| Efectivo en mano en LosAngeles, -----                | 100.00            |
| Efectivo en mano en LosAngeles(para Alicia)--        | 500.00            |
| Entregado a Tencha para compras ordenadas            |                   |
| por el General, -----                                | 100.00            |
| Total:-----  | <u>\$3.290.00</u> |

|   |                   |                   |
|---|-------------------|-------------------|
| Cantidad que le entrego hoy en mano, como |                   |                   |
| sobrante de los Ocho Mil recibidos, ----- | \$4.710.00        |                   |
| Sumas iguales:-----                       | <u>\$8.000.00</u> | <u>\$8.000.00</u> |

Los Angeles, Calif., Octubre 10 de 1935.

# THE COCKEYED MAYOR OF KAUNAKAKAI

(Pronounced COW-NA-COCK-EYÉ)



**GRASS HUT**  
ON THE BEACH AT WAIKIKI  
P. O. BOX 2937  
HONOLULU, HAWAII, U. S. A.

Words and Music by  
**R. ALEX. ANDERSON**

Writer of  
MALIHINI MELE      SOFT GREEN SEAS  
HAOLE HULA

PUBLISHED BY  
**R. ALEX. ANDERSON**  
HONOLULU, T. H.



# The Cockeyed Mayor Of Kaunakakai

(pronounced - cow'-na-cock-eye')

UKULELE TUNING

F B $\flat$  D G

Words and Music by  
R. ALEX. ANDERSON

Hula tempo

Copyright MCMXXXV by R. Alex. Anderson  
International Copyright Secured

The Cockeyed Mayor Of Kaunakakai - 2

THE COCKEYED MAYOR OF KAUNAKAKAI.

He wore a malo and a coconut hat, One was for this and the other for that, All the people shouted as he went by, He was the cockeyed Mayor of Kaunakakai.- He was just a lazy malihini haole boy, But all the girls were crazy to share his fish and poi. Oh! Oh! He made her buck and he made her fly All over the island of Molokai, You could hear the kane's and wahine's cheers, As they gave him a lei of kikanias. Oh now you've heard my story 'Bout the Mayor of Kaunakakai, All his fame and glory on the island of Molokai. Oh! Oh! He wore a malo and a coconut hat One was for this and the other for that, All the people shouted as he went by, He was the cock-eyed Mayor of Kaunakakai.

He wore a lei and he wore a smile, He drank a galon of oke to make life worth while, Then he made'em laugh till he made'em cry, He was the cockeyer Mayor of Kaunakakai. The horse he rode was skiny a broken down old female, So he placed a green panini right under that horse's tail. Oh! He made her buck and he made her fly All over the island of Molokai, You could hear the kane's and wahine's cheers, As they gave him a lei of kikanias, Oh now you've heard my story 'Bout the Mayor of Kaunakakai, All his fame and glory on the island of Molokai. Oh! Oh! He wore a malo and a coconut hat One was for this and the other for that, All the people shouted as he went by, He was the cockeyed Mayor of Kaunakakai.

Malo - loin cloth  
 Malihini-visitor  
 haole - white  
 poi - a starchy food

Oke - whiskey  
 panini - prickly pear  
 Kane - man  
 Wahine - woman  
 Lei - wreath  
 Kikania - burr

THE COCKEYED MAYOR OF KAUNAKAKAI.

He wore a malo and a coconut hat, One was for this and the other for that, All the people shouted as he went by, He was the cockeyed Mayor of Kaunakakai.- He was just a lazy malihini haole boy, But all the girls were crazy to share his fish and poi. Oh! Oh! He made her buck and he made her fly All over the island of Molokai, You could hear the kane's and wahine's cheers, As they gave him a lei of kikanias. Oh now you've heard my story 'Bout the Mayor of Kaunakakai, All his fame and glory on the island of Molokai. Oh! Oh! He wore a malo and a coconut hat One was for this and the other for that, All the people shouted as he went by, He was the cock-eyed Mayor of Kaunakakai.

He wore a lei and he wore a smile, He drank a galon of oke to make life worth while, Then he made'em laugh till he made'em cry, He was the cockeyer Mayor of Kaunakakai. The horse he rode was skiny a broken down old female, So he placed a green panini right under that horse's tail. Oh! He made her buck and he made her fly All over the island of Molokai, You could hear the kane's and wahine's cheers, As they gave him a lei of kikanias, Oh now you've heard my story 'Bout the Mayor of Kaunakakai, All his fame and glory on the island of Molokai. Oh! Oh! He wore a malo and a coconut hat One was for this and the other for that, All the people shouted as he went by, He was the cockeyed Mayor of Kaunakakai.

Malo - loin cloth  
 Malihini - visitor  
 haole - white  
 poi - a starchy food

Oke - whiskey  
 panini - prickly pear  
 Kane - man  
 Wahine - woman  
 Lei - wreath  
 Kikania - burr

# HAWAIIAN PARADISE

63

**GRASS HUT**  
ON THE BEACH AT WAIKIKI  
P. O. BOX 2937  
HONOLULU, HAWAII



**GUY LOMBARDO**

*words & music by*  
**HARRY OWENS**

**OLMAN**  
MUSIC CORPORATION  
745-7th AVE., NEW YORK



# HAWAIIAN PARADISE

Words and Music by  
HARRY OWENS

Slow and Dreamy

*mf*

VOICE *C* *dim* *F* *G7* *G7*

I'm so hap - py that my foot-steps wend - ed To this love - ly

*p*

*C* *dim* *G7* *C* *Eb7*

Isle where cares are mend - ed Par - a - dise where all good things are

*G* *Am* *D7* *G7* *dim* *G7*

blend - ed Since I've found you my life's quest is end - ed

*G7* *C* *C* *G7* *dim* *Dm* *G7*

CHORUS *C* *C* *G7* *dim* *Dm* *G7*

HA - WAI - IAN PAR - A - DISE Ha - wai - ian Heav - en Land of make be - lieve

*p-mf*

*p-mf*

\*Diagrams are for Guitar. Letters and symbols are names of chords for Ukulele and Banjo.

Copyright MCMXXXV by OLMAN MUSIC CORPORATION, 745 Seventh Ave., New York, N. Y.  
 International Copyright Secured Made in U.S.A. All Rights Reserved  
 Francis Day & Hunter, Ltd., London, England Allan & Co. Prop. Ltd. Melbourne, Australia

*C* *G7* *C* *C* *G7*

come true, Please take me to your heart Ha - wai - ian Heav - en

*dim* *Dm* *G7* *C* *F* *C7* *F*

Nev - er more to part from you; Let me live and

*C* *Am* *D7* *G7* *Fm*

laugh with you while love is young. And let me rest here when my day is thru;

*G7* *C* *C* *G7* *dim* *Dm* *G7*

HA - WAI - IAN PAR - A - DISE At last I've found you Land of make be - lieve

*G7* *C* *C* *G7* *dim* *Dm* *G7*

*G7* *C* *C* *G7* *dim* *Dm* *G7*

*G7* *C* *C* *G7* *dim* *Dm* *G7*

1 *C* *dim* *G7* *C* 2 *C* *F* *Fm* *C*

come true. HA - WAI - IAN true.

*C* *F* *Fm* *C*

*C* *F* *Fm* *C*

Hawaiian Paradise 2

**WARNING** Any copying of the words or music of this song, or any portion thereof, makes the infringer liable to criminal prosecution under the U. S. copyright law.

# Announcing

The Greatest Name In Music . . . On The Greatest Music Folio Ever Published!

## GUY LOMBARDO'S OWN SONG FOLIO



### Points of Preference

- 30 outstanding songs, complete words and music, all played and made famous by Guy Lombardo and his orchestra!
- Never before have the Lombardo favorites been issued in folio form.
- The original LOMBARDO TANGO, WALTZ and RUMBA published for the first time.
- Contains first published copy of the Lombardo version of "VILIA," new radio theme song of the band.

WITH PIANO ARRANGEMENTS IN THE  
DISTINCTIVE LOMBARDO STYLE, MADE BY  
CARMEN LOMBARDO, HIMSELF!

ON SALE AT ALL MUSIC STORES